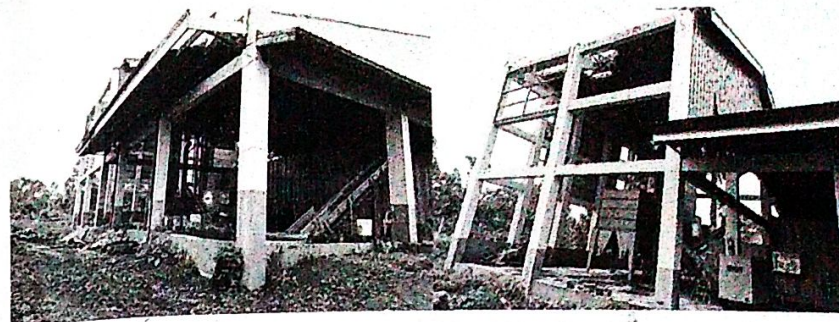


1 FLOOR PLAN  
SCALE 1:200



EXISTING BUILDING



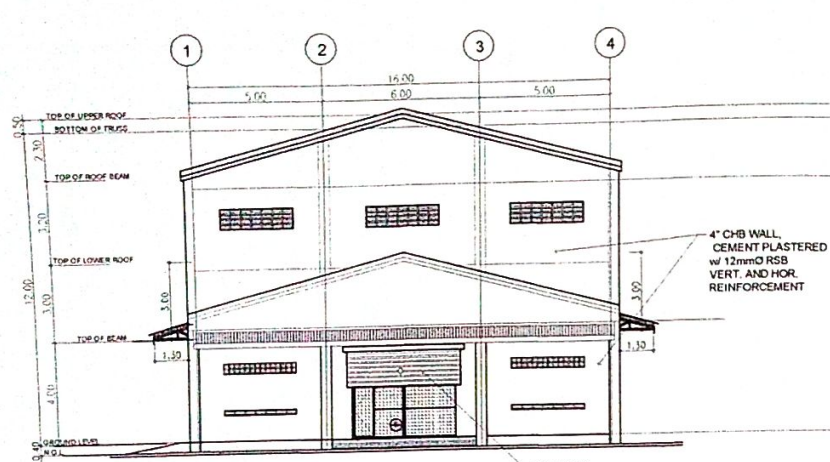
REPAIR



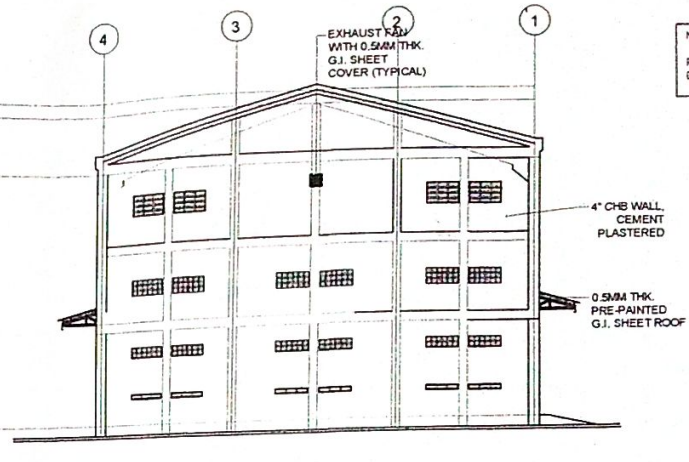
REPUBLIC OF THE PHILIPPINES  
DEPARTMENT OF AGRICULTURE  
REGIONAL FIELD OFFICE NO.5  
SAN AGUSTIN, PLU, CAMARINES SUR

PROJECT TITLE: <b>REPAIR OF VILLAGE TYPE DRYER (VTD) BUILDING</b>	PREPARED BY: <i>[Signature]</i> <b>RYAN L. BERINA</b> CAD - INPUT	CHECKED BY: <i>[Signature]</i> <b>ONOFRE ANRUIZ JR.</b> CIVIL ENGINEER IN CHARGE	SUBMITTED BY: <i>[Signature]</i> <b>JERRY A. EBOÑA</b> A.E.I.T. / EDOS HEAD	RECOMMENDING APPROVAL: <i>[Signature]</i> <b>ENGR. NILDA Y. ALBAÑO</b> CHIEF - RAED	APPROVED BY: <i>[Signature]</i> <b>LUZ R. MARCELINO</b> RTO & OPERATION AND EXTENSION	APPROVED BY: <i>[Signature]</i> <b>RODEL TORRILLA, MABE</b> REGIONAL EXECUTIVE DIRECTOR	SHT. CONTENT: AS SHOWN ABOVE SHEET NO. 1 3
--	--	---	--	--	--	--	---



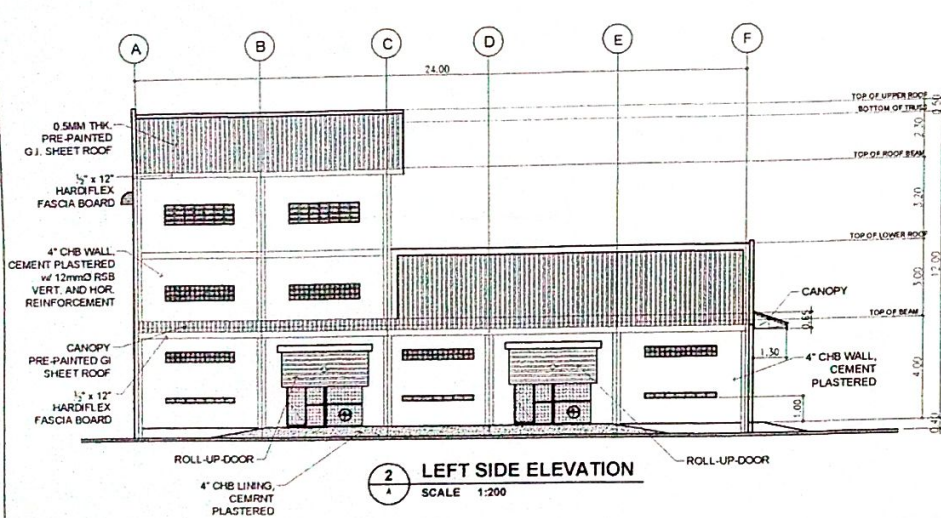


2 FRONT ELEVATION  
SCALE 1:200

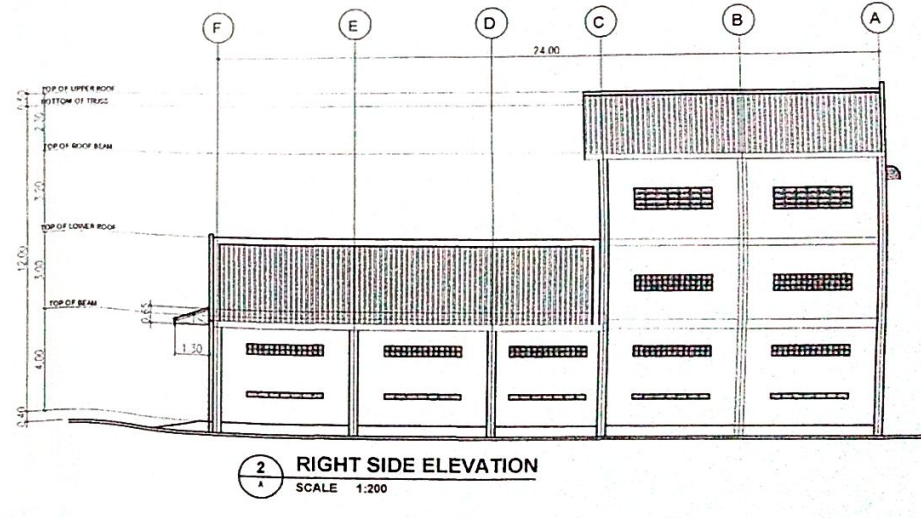


2 REAR ELEVATION  
SCALE 1:200

NOTE: PROVIDE 0.5mm THK. PRE-PAINTED G.I. SHT. GUTTER w/ 3\"/>



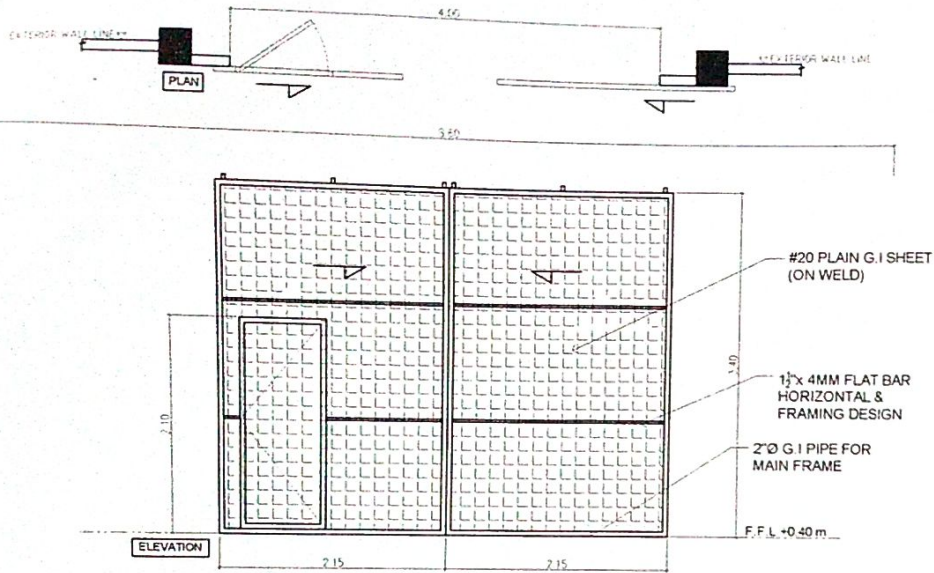
2 LEFT SIDE ELEVATION  
SCALE 1:200



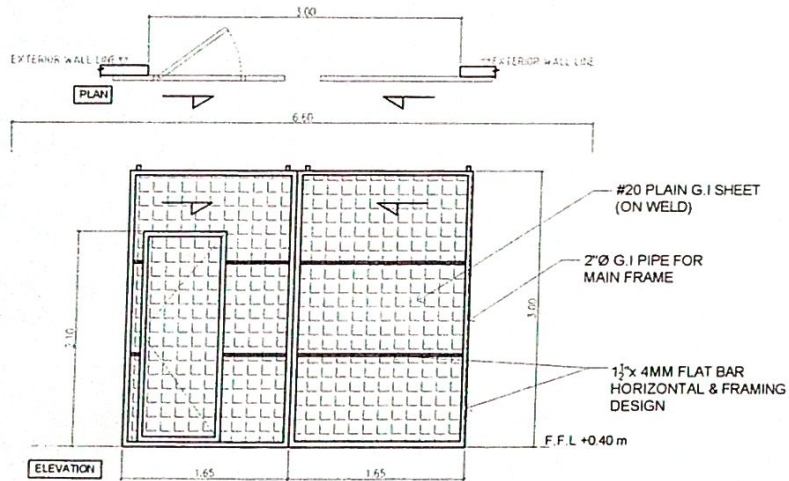
2 RIGHT SIDE ELEVATION  
SCALE 1:200

	PROJECT TITLE: <b>REPAIR OF VILLAGE TYPE DRYER (VTD) BUILDING</b>	PREPARED BY: RYAN E. BERIÑA CAD - INPUT	CHECKED BY: ONOFRE A. RUIZ JR. CIVIL ENGINEER IN CHARGE	SUBMITTED BY: JERRY A. EBOÑA EXECUTIVE HEAD	RECOMMENDING APPROVAL: ENGR. NILDAT ALBAÑO CHIEF - RAED	APPROVED BY: LUZ R. MARCELINO RTO for OPERATION AND EXTENSION	APPROVED BY: RODEL P. TORNILLO, MABE REGIONAL EXECUTIVE DIRECTOR	SHT. CONTENT AS SHOWN ABOVE SHEET NO.	
	LOCATION: CAROLINA, HAGA CITY								2
								3	

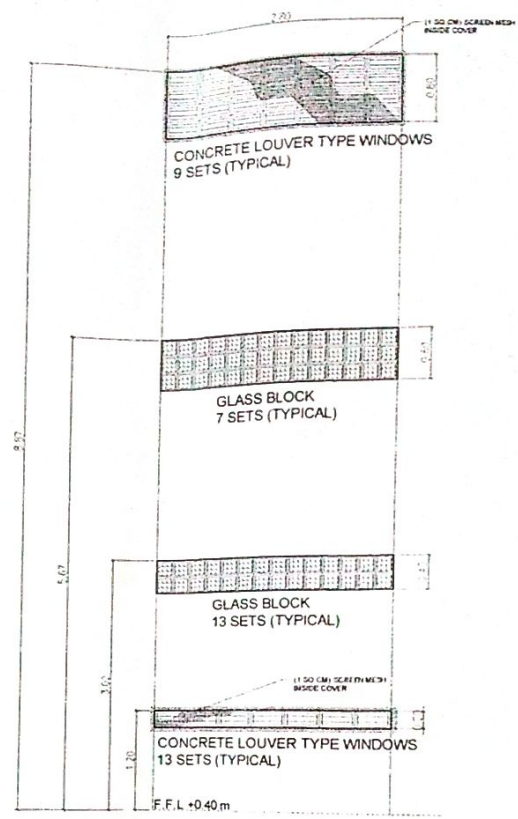




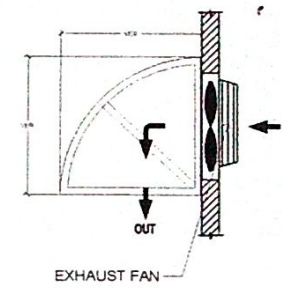
FABRICATED STEEL DOOR (SLIDING TYPE)  
1 SET  
SCALE 1:25 M



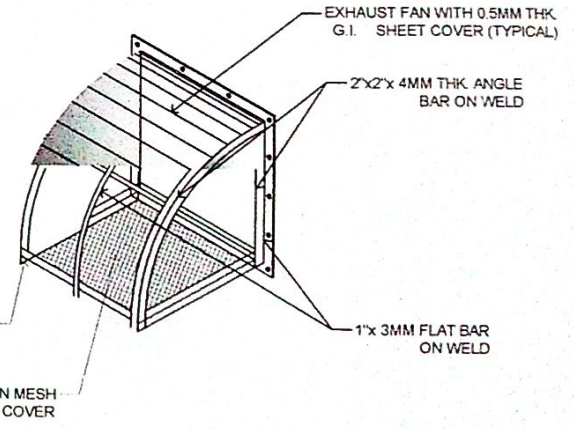
FABRICATED STEEL DOOR (SLIDING TYPE)  
2 SETS  
SCALE 1:25 M



SCHEDULE OF WINDOWS  
SCALE 1:30 MTS



EXHAUST FAN



DETAIL OF EXHAUST FAN COVER  
SCALE 1:30 MTS



REPUBLIC OF THE PHILIPPINES  
DEPARTMENT OF AGRICULTURE  
REGIONAL FIELD OFFICE NO. 5  
SAN AGUSTIN, IRI, CAMARINES SUR

PROJECT TITLE: <b>REPAIR OF VILLAGE TYPE DRYER (VTD) BUILDING</b>	PREPARED BY: <i>[Signature]</i> RYAN E. BERIÑA CAD - INPUT	CHECKED BY: <i>[Signature]</i> ONOFRE A. RUIZ JR. CIVIL ENGINEER IN-CHARGE	SUBMITTED BY: <i>[Signature]</i> JERRY A. EBOÑA A.E III / PDGS HEAD	RECOMMENDING APPROVAL: <i>[Signature]</i> ENGR. NILES T. ALIBANO CIVIL ENGINEER	APPROVED BY: <i>[Signature]</i> LUIZ R. MARCELINO REGIONAL OPERATIONS AND EXTENSION	APPROVED BY: <i>[Signature]</i> RODEL P. TORNILLA, MABE REGIONAL EXECUTIVE DIRECTOR	SHT. CONTENT: AS SHOWN ABOVE SHEET NO. 3 / 3
LOCATION: CAROLINA, NAGA CITY							