
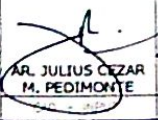



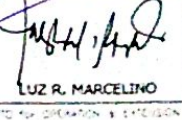



1 VICINITY MAP
A 1 SCALE
NTS

2 SITE DEVELOPMENT PLAN
A 1 SCALE
1:400m

 REPUBLIC OF THE PHILIPPINES DEPARTMENT OF AGRICULTURE REGIONAL FIELD OFFICE NO. 5 SAN AGUSTIN, PILI, CAMARINES SUR	PROJECT TITLE REPAIR & IMPROVEMENT OF SLOPE PROTECTION ALONG DA BOUNDARIES (INIBUNAN CREEK)	DESIGNED BY	CHECKED BY	VERIFIED BY	SUBMITTED BY	RECOMMENDING OFFICIAL	APPROVED BY	DATE
	SOURCE OF FUND: NDRRM LOCATION: DA RFO 5 COMPOUND, SAN AGUSTIN, PILI, CAMARINES SUR	 AR. JULIUS CEZAR M. PEDIMONTE	 ONOFRE A. RUIZ JR. UNIT HEAD FOR REPAIRS	 JERRY A. EBOÑA DISTRICT HEAD - EROSA	 ENGR. NILDA T. ALBAÑO DISTRICT HEAD - PANGASINAN	 LUZ R. MARCELINO DISTRICT SUPERVISOR & SUPERVISOR	 RODELL A. TORILLA, MABE REGIONAL DISTRICT DIRECTOR	



PERSPECTIVE VIEW 1



PERSPECTIVE VIEW 2



REPUBLIC OF THE PHILIPPINES
DEPARTMENT OF AGRICULTURE
 REGIONAL FIELD OFFICE NO. 5
 SAN AGUSTIN, PILI, CAMARINES SUR

PROJECT TITLE	DESIGNED BY	CHECKED BY	VERIFIED BY	SUBMITTED BY	RECOMMENDING APPROVAL	APPROVED BY	DATE	CONTENT
REPAIR & IMPROVEMENT OF SLOPE PROTECTION ALONG DA BOUNDARIES (INIBUNAN CREEK) SOURCE OF FUND: NDRRM LOCATION: DA RFO 5 COMPOUND, SAN AGUSTIN, PILI, CAMARINES SUR	 AR. JULIUS CEZAR M. PEDIMONTE CHIEF-INS	 ONOFRE A. RUIZ JR. CHIEF-LEAD-APP-EPOSS	 JERRY A. EBOÑA SECTION LEAD-EPOSS	 ENGR. NILDA T. ALBAÑO CHIEF-PAED	 LUZ R. MARCELINO CHIEF-OPERATION & EXTENSION	 RODELL V. TORCILLA, MABE REGIONAL FELLOW DIRECTOR		

AS SHOWN ABOVE

SHEET NO.

DATE



PERSPECTIVE VIEW 1



PERSPECTIVE VIEW 2



REPUBLIC OF THE PHILIPPINES
 DEPARTMENT OF AGRICULTURE
 REGIONAL FIELD OFFICE NO. 5
 SAN AGUSTIN, PILI, CAMARINES SUR

REPAIR & IMPROVEMENT OF
 SLOPE PROTECTION ALONG DA
 BOUNDARIES (INIBUNAN CREEK)
 NEGROS

DA RFO 5 COMPOUND, SAN AGUSTIN,
 PILI, CAMARINES SUR

DESIGNED BY

MR. JULIUS CEZAR
 M. PEDRIMENTE

DESIGNED BY

ENGR. LARRY JR.

DESIGNED BY

ENGR. A. EBONA

DESIGNED BY

ENGR. NOLAN T. ALBAÑO

DESIGNED BY

ENGR. R. MARCELINE

DESIGNED BY

RODEL TORRILLA, MABE

DATE

NO. DRAWING
 NO. OF SHEETS
 SHEET NO.



PERSPECTIVE VIEW 1



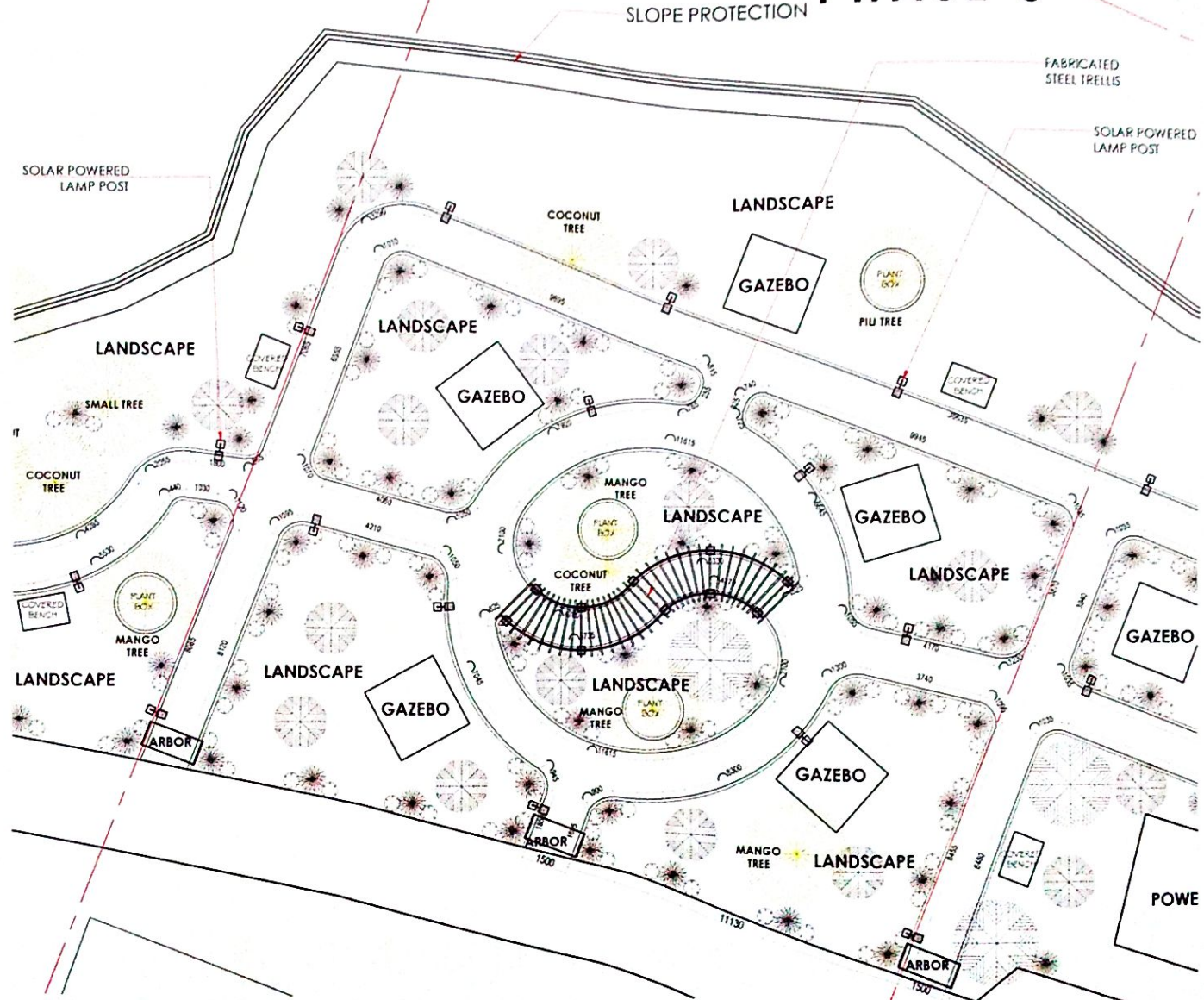
PERSPECTIVE VIEW 2




REPUBLIC OF THE PHILIPPINES
 DEPARTMENT OF AGRICULTURE
 REGIONAL FIELD OFFICE NO. 5
 SAN AGUSTIN, P.L., CAMARINES SUR

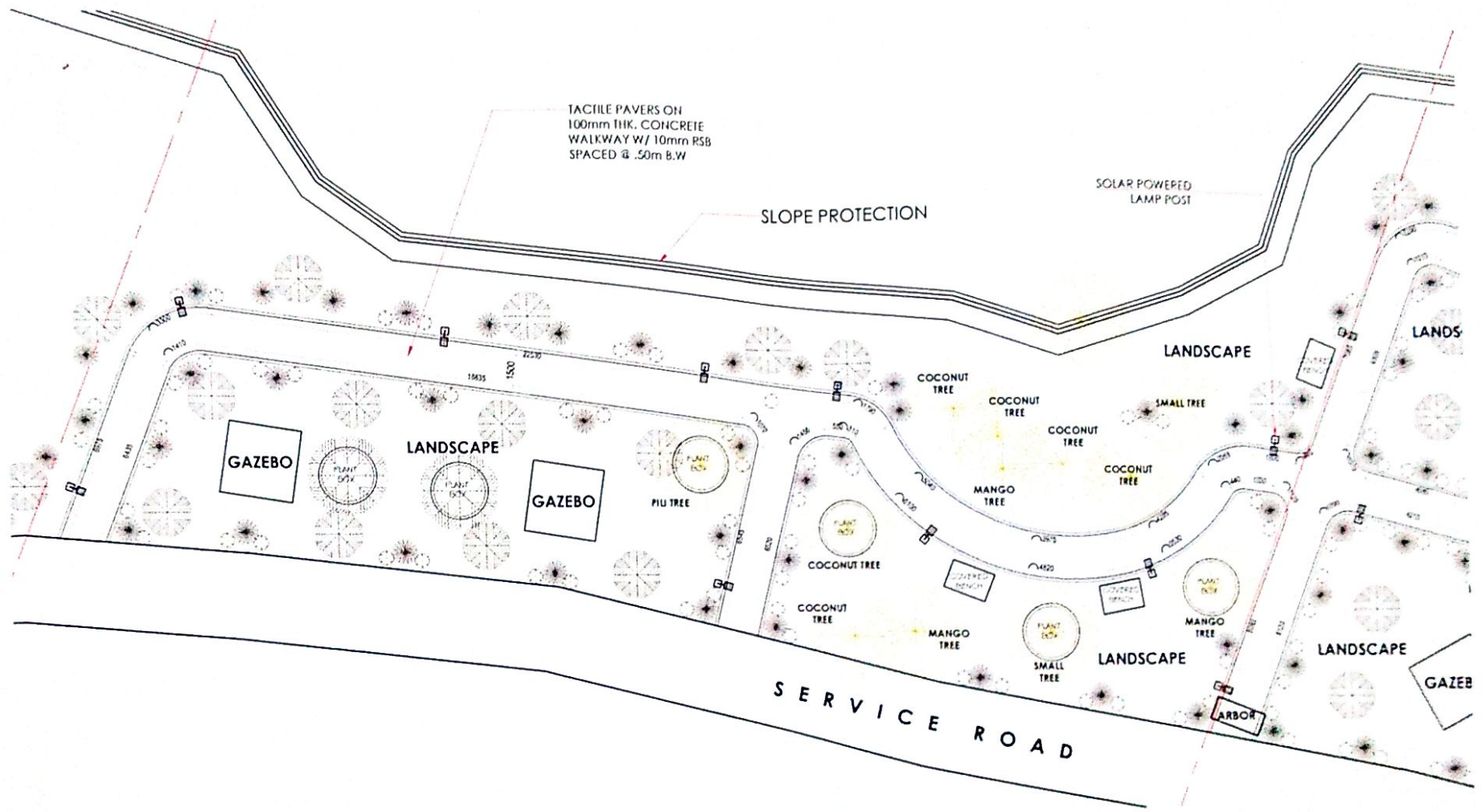
PROJECT TITLE	DESIGNED BY	CHECKED BY	APPROVED BY	QUANTITIES	ATTACHMENT APPROVAL	APPROVED BY	DATE
REPAIR & IMPROVEMENT OF SLOPE PROTECTION ALONG DA BOUNDARIES (INIBUNAN CREEK)	AR. JULIUS CEZAR M. PEDMONTE	ONOFFREJA FUJIZ JR.	JERRY A. EBOÑA	ENGR. NILDA T. ALBAÑO	RUIZ R. MARCELINO	RODEL TORRELLA MASE	
OFFICE OF THE DIRECTOR DA RFO 5 COMPOUND, SAN AGUSTIN, P.L. CAMARINES SUR							

PHASE 3





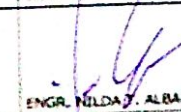
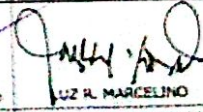



1 PHASE 3 SITE DEVELOPMENT PLAN
 SCALE 1:150m

 <p>REPUBLIC OF THE PHILIPPINES DEPARTMENT OF AGRICULTURE REGIONAL FIELD OFFICE NO. 5 SAN AGUSTIN, PILI, CAMARINES SUR</p>	PROJECT TITLE:	DESIGNED BY:	CHECKED BY:	VERIFIED BY:	SUBMITTED BY:	RECOMMENDING APPROVAL:	APPROVED BY:	SAT. CONTENT
	SOURCE OF FUND: NDRRM	AR. JULIUS CEAR N. PEDIMONTE	ONOFRE ALVIZ JR.	JERRY A. EBOÑA	ENGR. NILDA T. ALBAÑO	LUZ R. MARCELINO	RODEL V. TORNELLA, MABE	AS SHOWN ABOVE
	LOCATION: DA RFO 5 COMPOUND, SAN AGUSTIN, PILI, CAMARINES SUR	CHIEF - INPUT	UNIT HEAD - SUP-EPOSS	SECTION HEAD - EPOSS	CHIEF - RAED	POD FOR OPERATION & EXTENSION	REGIONAL EXECUTIVE DIRECTOR	SHEET NO. 4-7



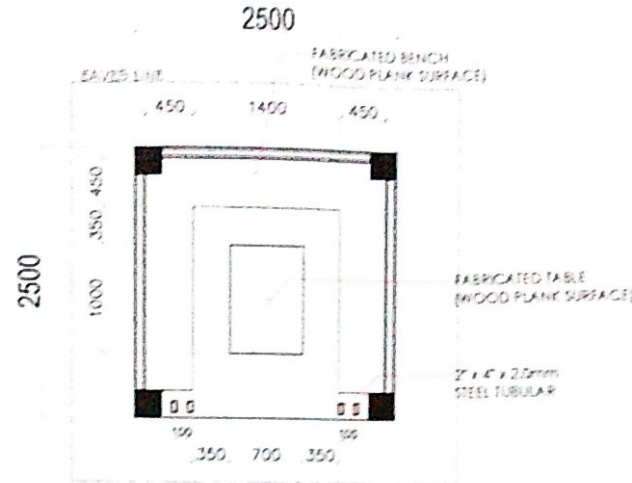
1 PHASE 4 SITE DEVELOPMENT PLAN
 A/B SCALE 1:150m

 DEPARTMENT OF AGRICULTURE 1998	REPUBLIC OF THE PHILIPPINES DEPARTMENT OF AGRICULTURE REGIONAL FIELD OFFICE NO. 5 SAN AGUSTIN, PILI, CAMARINES SUR	PROJECT TITLE REPAIR & IMPROVEMENT OF SLOPE PROTECTION ALONG DA BOUNDARIES (INIBUNAN CREEK)	DESIGNED BY  M. PEDIMONTE	CHECKED BY  ONOFRE RUIZ JR.	APPROVED BY  JERRY A. EBOÑA	SUBMITTED BY  ENGR. NILDA J. ALBAÑO	INTERNATIONAL APPROVAL  LUZ R. MARCELINO	APPROVED BY  RODELL CORNILLA MABE	DATE 11/15/2023
		SOURCE OF FUNDS NDRRM	LOCATION DA RFO 5 COMPOUND, SAN AGUSTIN, PILI, CAMARINES SUR	PROJECT NO. 11/15/2023	DRAWN BY 11/15/2023	CHECKED BY 11/15/2023	APPROVED BY 11/15/2023	APPROVED BY 11/15/2023	APPROVED BY 11/15/2023

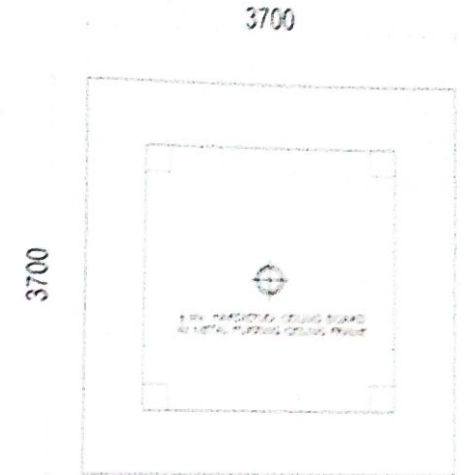
GAZEBO (13 units)



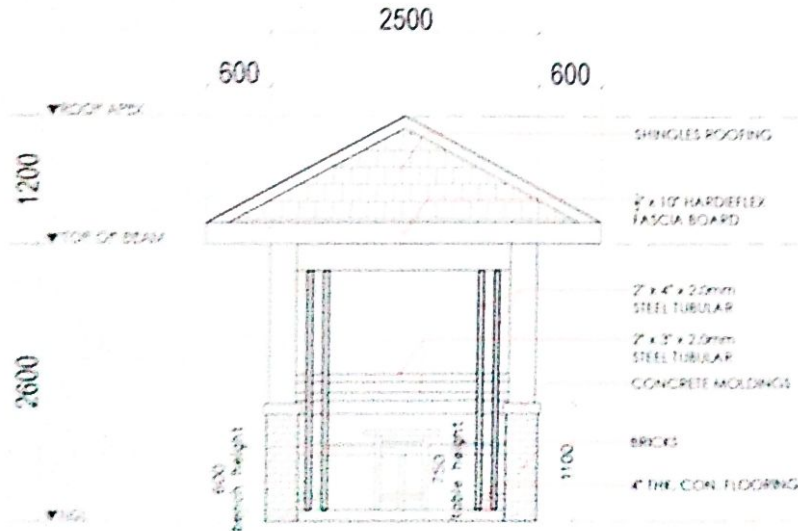
PERSPECTIVE



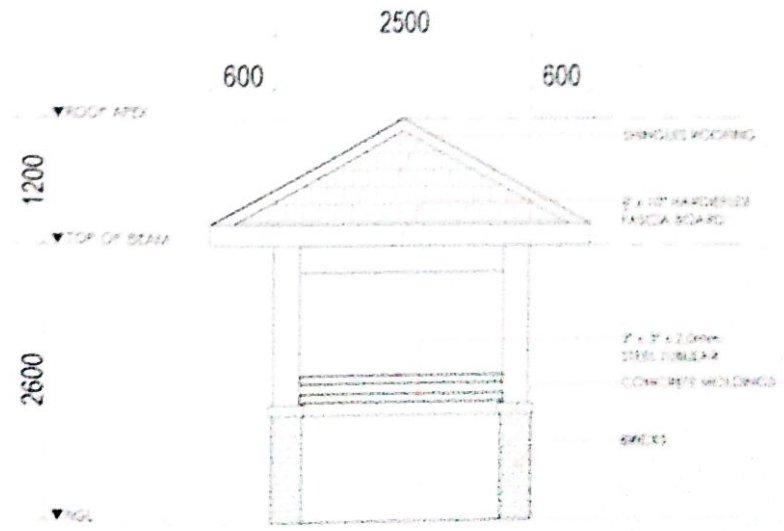
1 FLOOR PLAN
SCALE 1:50m



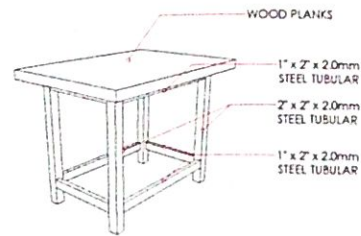
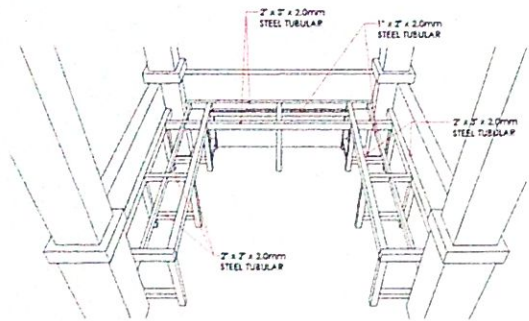
2 CEILING PLAN
SCALE 1:50m



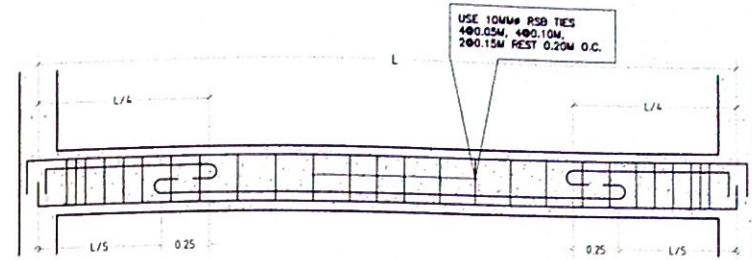
3 FRONT ELEVATION
SCALE 1:50m



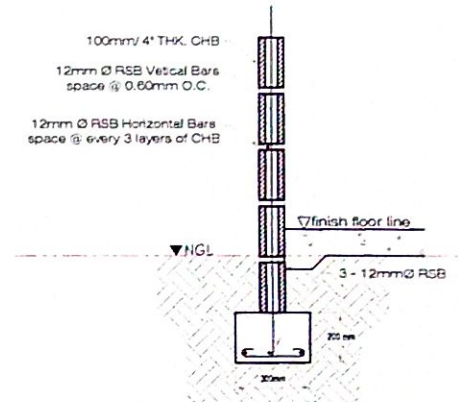
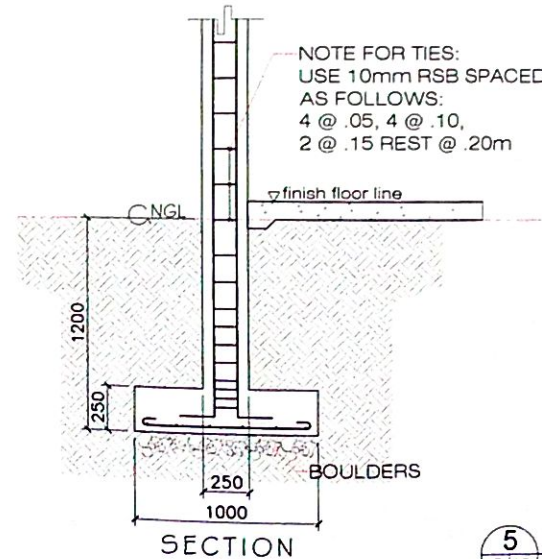
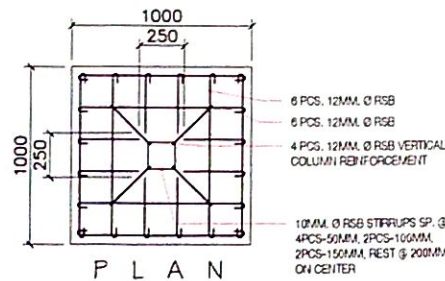
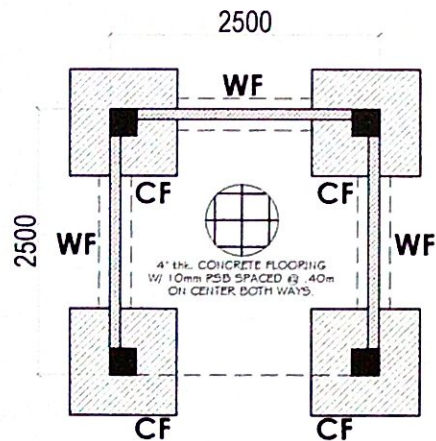
4 SIDE ELEVATION
SCALE 1:50m



1 BENCH FRAME & TABLE DETAIL
SCALE: A 10 NTS



4 BEAM DETAIL
SCALE: S 10 1:25m



2 FOUNDATION PLAN
SCALE: S 10 1:50m

3 FOUNDATION DETAIL
SCALE: S 10 1:30m

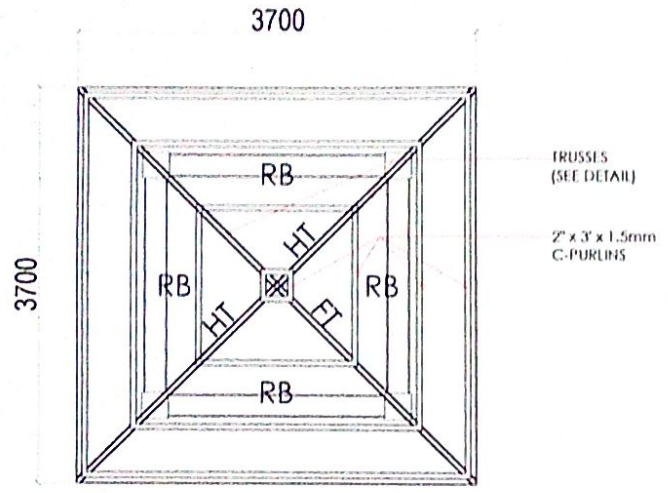
5 WALL FOOTING DET.
SCALE: S 10 1:20m



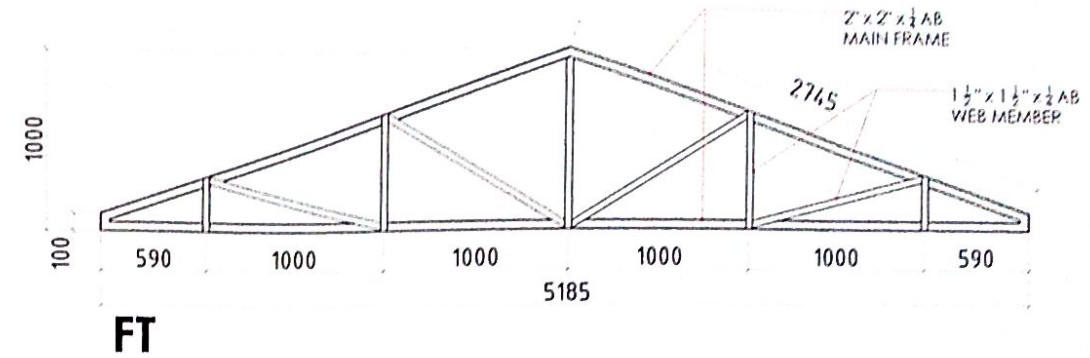
REPUBLIC OF THE PHILIPPINES
DEPARTMENT OF AGRICULTURE
REGIONAL FIELD OFFICE NO. 5
SAN AGUSTIN, PILI, CAMARINES SUR

PROJECT TITLE	DESIGNED BY	CHECKED BY	VERIFIED BY	SUBMITTED BY	RECOMMENDING APPROVAL	APPROVED BY	SHT. CONTENT
REPAIR & IMPROVEMENT OF SLOPE PROTECTION ALONG DA BOUNDARIES (INIBUNAN CREEK)	AR. JULIUS CEZAR M. PEDIMONTE	ONOFRE M. RUIZ JR.	JERRY A. EBOÑA	ENGR. NILDA T. ALBAÑO	LUZ R. MARCELINO	RODEL TORNILLA, MABE	AS SHOWN ABOVE
SOURCE OF FUND: NDRRM	CHIEF - INPUT	CHIEF HEAD FOR NFP-EPDSS	SECTION HEAD-EPDSS	CHIEF-PAED	PTD for OPERATION & EXTENSION	REGIONAL EXECUTIVE DIRECTOR	SHEET NO. 10
LOCATION: DA RFO 5 COMPOUND, SAN AGUSTIN, PILI, CAMARINES SUR							

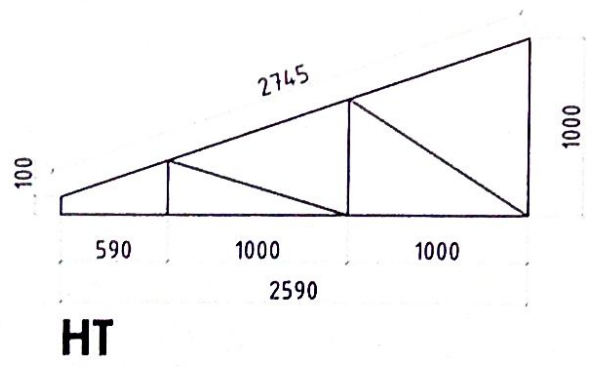
- NOTE:**
1. PROVIDE 4.5mm THK. GUSSET PLATE AT EVERY CONNECTION.
 2. CONTRACTOR SHALL SUBMIT SHOP DRAWINGS FOR APPROVAL PRIOR TO FABRICATION.
 3. THE CONTRACTOR SHALL BE RESPONSIBLE TO VERIFY ALL DIMENSIONS DURING THE ACTUAL CONSTRUCTION.



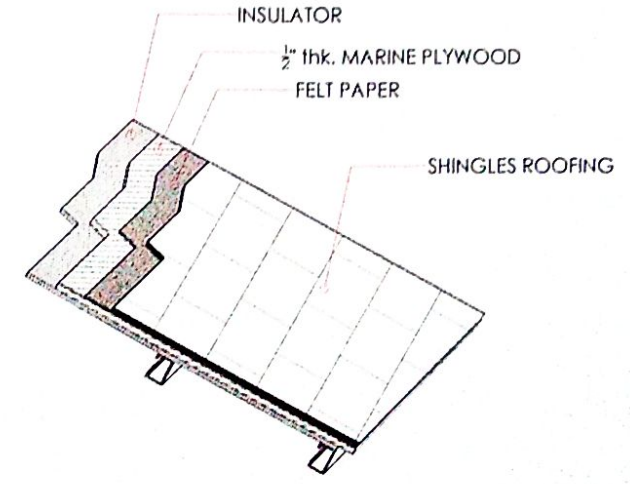
1 ROOF FRAMING PLAN
 SCALE 1:50m



2 TRUSS DETAIL
 SCALE 1:30m



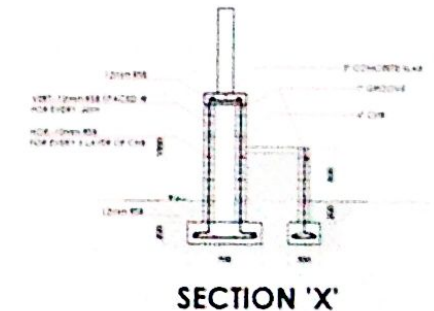
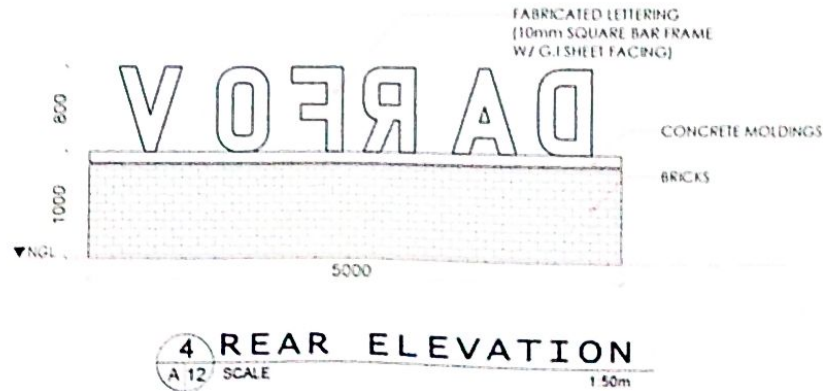
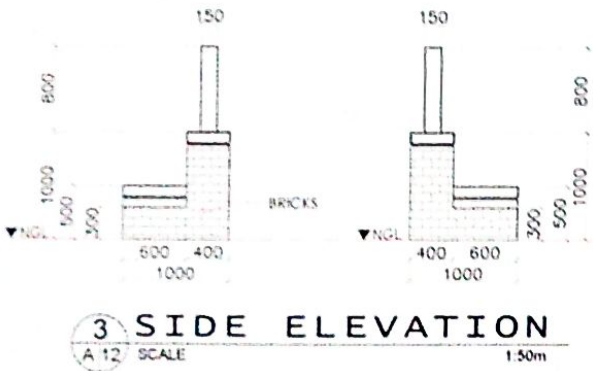
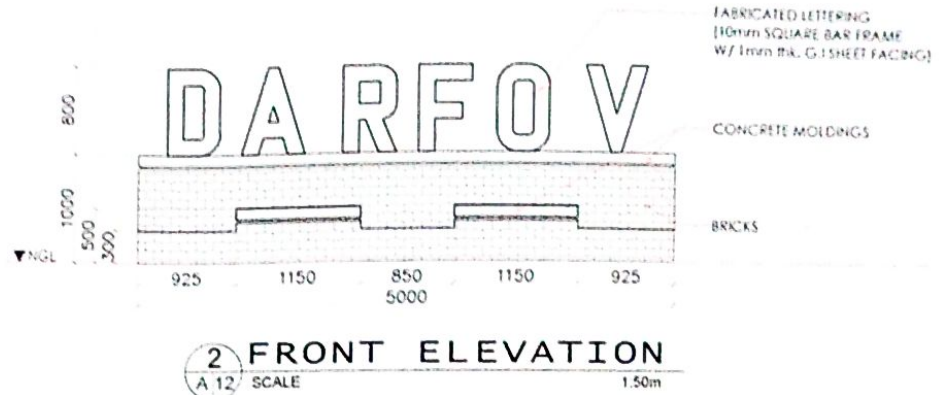
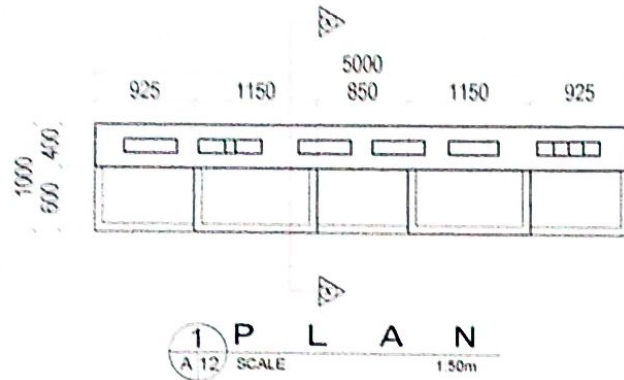
3 TRUSS DIAGRAM
 SCALE 1:30m



ROOFING DETAIL

<p>REPUBLIC OF THE PHILIPPINES DEPARTMENT OF AGRICULTURE REGIONAL FIELD OFFICE NO. 5 SAN AGUSTIN, PILI, CAMARINES SUR</p>	PROJECT TITLE REPAIR & IMPROVEMENT OF SLOPE PROTECTION ALONG DA BOUNDARIES (INIBUNAN CREEK)	DESIGNED BY AR. JULIUS CEZAR M. PEDIMONTE CAD. INGEN.	CHECKED BY ONOFRETA RUIZ JR. UNIT HEAD / OFF. ENGR.	VERIFIED BY JERRY A. EBOÑA REGIONAL HEAD-ENGR.	SUBMITTED BY ENGR. NILDA T. ALBAÑO CHIEF STAFF	RECOMMENDING APPROVAL LUZ R. MARCELINO RFO FOR OPERATION & EXTENSION	APPROVED BY RODEL TORVILLA, MABE REGIONAL EXECUTIVE DIRECTOR	DATE / COMMENT AS SHOWN ABOVE SHEET NO. 22
	SOURCE OF FUNDS: NDRAM LOCATION: DA RFO 5 COMPOUND, SAN AGUSTIN, PILI, CAMARINES SUR							

PLANT BOX W/ FABRICATED LETTERS



REPUBLIC OF THE PHILIPPINES
DEPARTMENT OF AGRICULTURE
REGIONAL FIELD OFFICE NO. 5
SAN AGUSTIN, PILL, CAMARINES SUR

PROJECT TITLE
**REPAIR & IMPROVEMENT OF
SLOPE PROTECTION ALONG DA
BOUNDARIES (INIBUNAN CREEK)**
NDRRM
DA RFO 5 COMPOUND, SAN AGUSTIN,
PILL, CAMARINES SUR

DESIGNED BY

DR. JULIUS CESAR
N. PEDIMONTE

CHECKED BY

ONOVEN RUIZ JR.

APPROVED BY

JERRY A. EBOÑA

PROJECT NO.

ENGR. NILDA T. ALBAÑO

FINANCING APPROVAL

LUZ R. MARCELINO

APPROVED BY

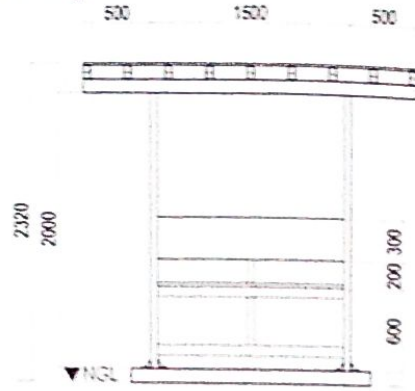
RODEL P. COYUNGA, MAHE

NO. DRAWN
REVISION
SHEET NO.
12

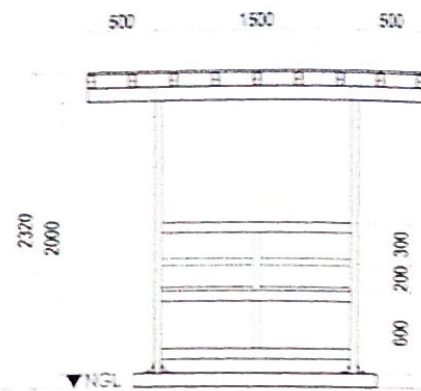
COVERED BENCH (15 units)



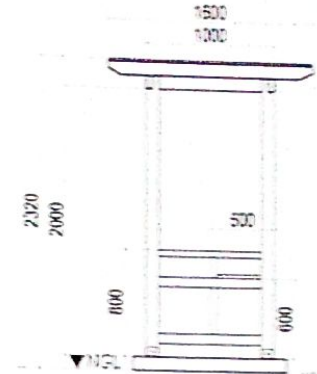
PERSPECTIVE



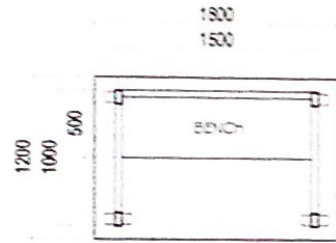
FRONT ELEVATION



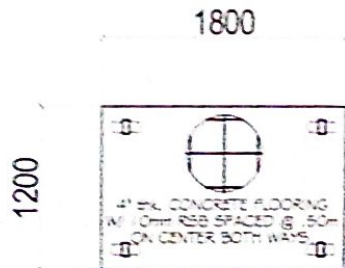
REAR ELEVATION



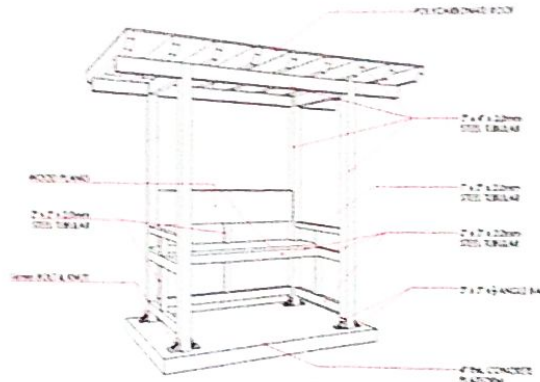
SIDE ELEVATION



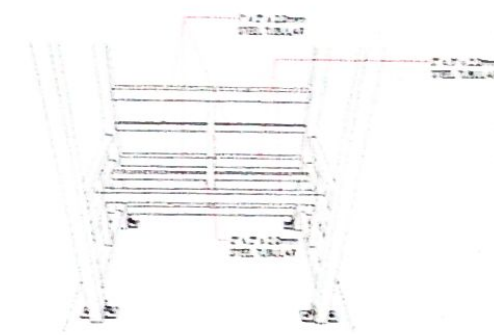
P L A N



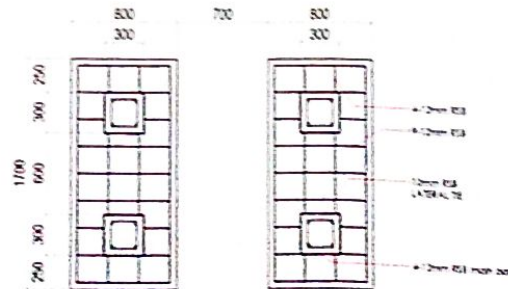
PLATFORM DETAIL



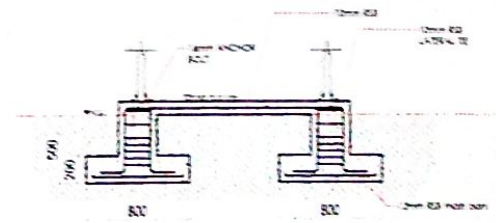
BENCH DETAIL



BENCH FRAMING



FOUNDATION DET.



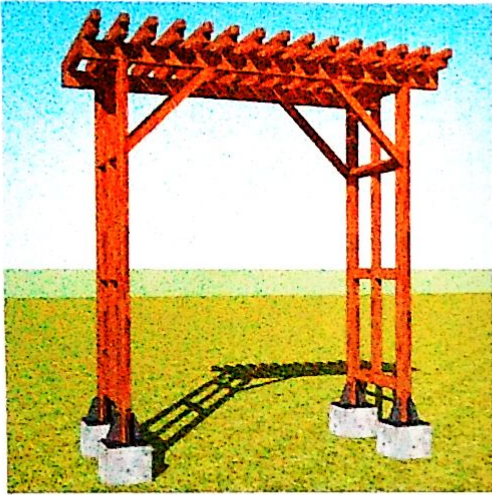
PLATFORM DETAIL



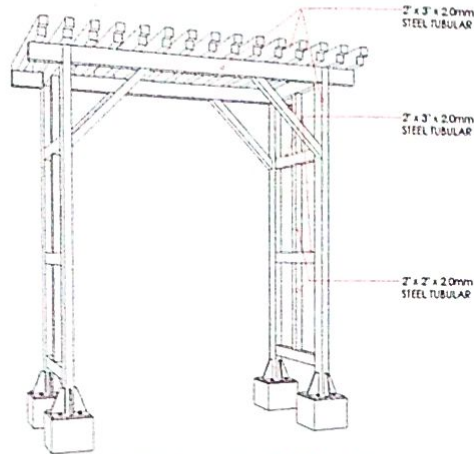
REPUBLIC OF THE PHILIPPINES
DEPARTMENT OF AGRICULTURE
REGIONAL FIELD OFFICE NO. 5
SAN AGUSTIN, PILL CAMARINES SUR

PROJECT TITLE	DESIGNED BY	CHECKED BY	VERIFIED BY	SUBMITTED BY	RECOMMENDING APPROVAL	APPROVED BY	DATE
REPAIR & IMPROVEMENT OF SLOPE PROTECTION ALONG DA BOUNDARIES (INIBUNAN CREEK)	DR. JULIUS CEZAR M. PEDIMONTE	ONOFFRE RUIZ JR.	JERRY A. EBOÑA	ENGR. NIÑA T. ALBAÑO	LUZ R. MARCELINO	RODOLFO P. TORVELLA, MASE	10
SOURCE OF FUND: NDRRM	DA RFO 5 COMPOUND, SAN AGUSTIN, PILL CAMARINES SUR						

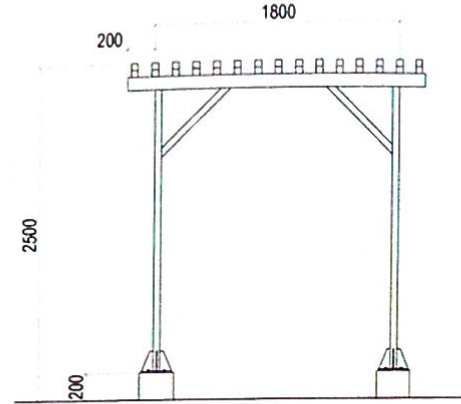
ARBOR (7 units)



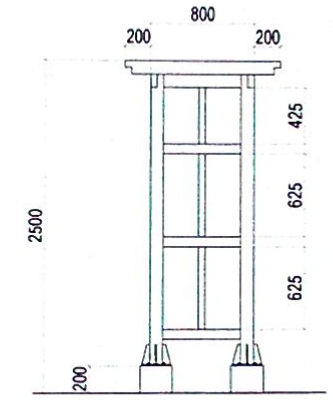
PERSPECTIVE



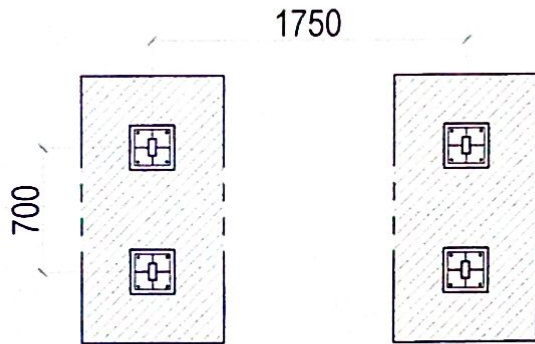
ARBOR DETAIL



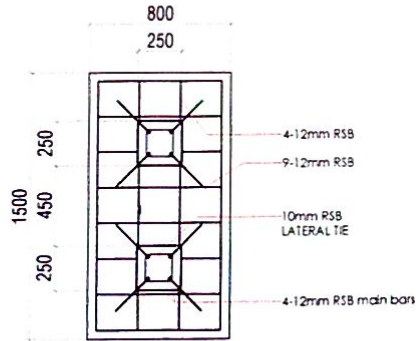
FRONT ELEVATION



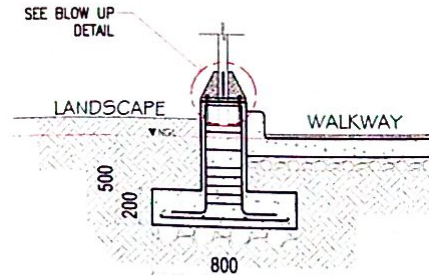
SIDE ELEVATION



FOUNDATION PLAN



PEDESTAL DETAIL



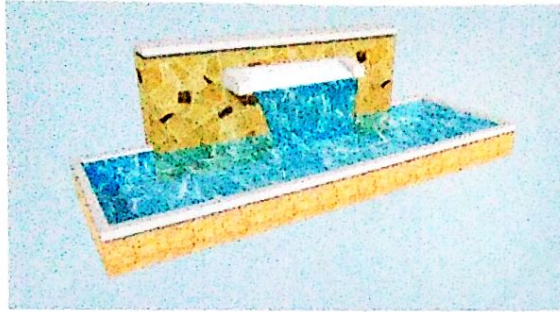
BLOW UP DETAIL



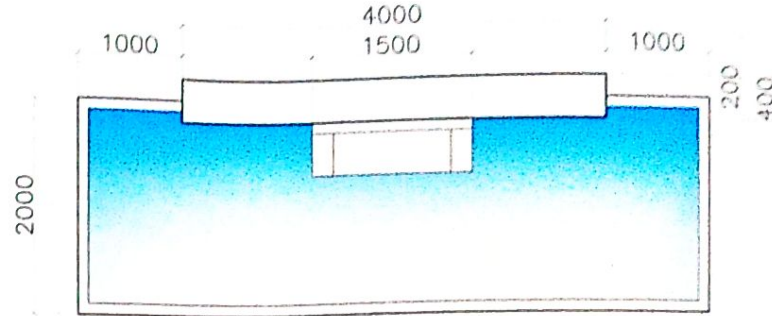
REPUBLIC OF THE PHILIPPINES
DEPARTMENT OF AGRICULTURE
REGIONAL FIELD OFFICE NO. 5
SAN AGUSTIN, PILI, CAMARINES SUR

PROJECT TITLE	DESIGNED BY:	CHECKED BY:	VERIFIED BY:	SUBMITTED BY:	RECOMMENDING APPROVAL:	APPROVED BY:	SMT. CONTENT
REPAIR & IMPROVEMENT OF SLOPE PROTECTION ALONG DA BOUNDARIES (INIBUNAN CREEK)	AR. JULIUS CEZAR N. PEDIMONTE	ENOFRE A. NUJIZ JR.	JERRY A. EBOÑA	ENSR. NILDA T. ALBAÑO	LUZ R. MARCELINO	RODEL R. TORVILLA, MABE	AS SHOWN ABOVE SHEET NO. 1/2
SOURCE OF FUND: NDRRM LOCATION: DA RFO 5 COMPOUND, SAN AGUSTIN, PILI, CAMARINES SUR	CS	ENR. HEAD FOR ERM-EPDSS	SECTION HEAD-EPDSS	CHEF-PAED	RTD FOR OPERATION & EXTENSION	REGIONAL EXECUTIVE DIRECTOR	

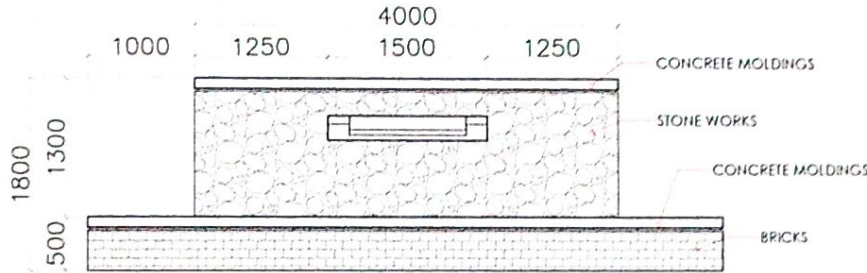
WATER FEATURES



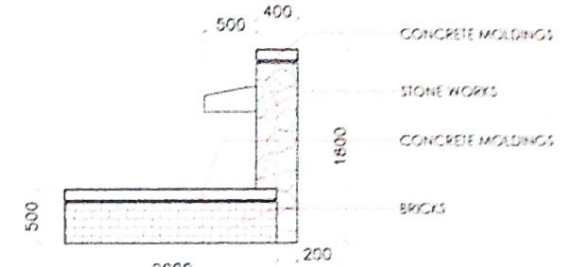
PERSPECTIVE



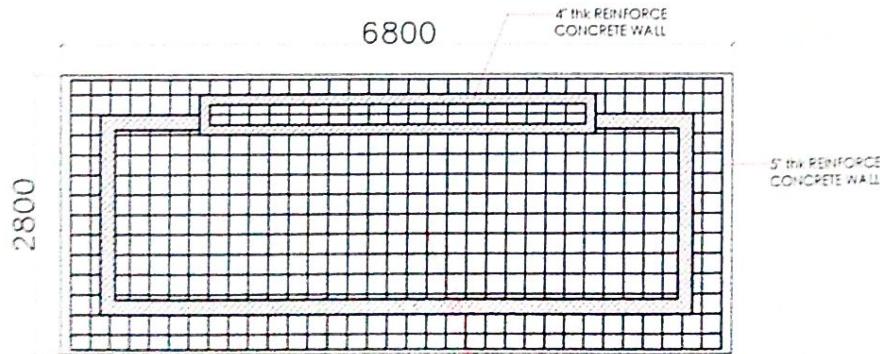
P L A N



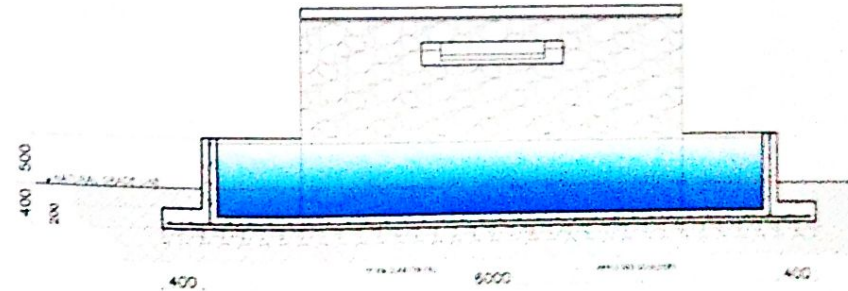
FRONT ELEVATION



SIDE ELEVATION



FOUNDATION PLAN



FOUNDATION DETAIL



REPUBLIC OF THE PHILIPPINES
 DEPARTMENT OF AGRICULTURE
 REGIONAL FIELD OFFICE NO. 5
 SAN AGUSTIN, P.D., CAMARINES SUR

PROJECT TITLE
**REPAIR & IMPROVEMENT OF
 SLOPE PROTECTION ALONG DA
 BOUNDARIES (INIBUNAN CREEK)**
 REGIONAL FIELD OFFICE NO. 5
 SAN AGUSTIN, P.D., CAMARINES SUR

DESIGNED BY
 AR. JULIUS CEZAR
 M. REDIMOANTE

CHECKED BY
 CONRADO ARRIETA JR.

VERIFIED BY
 JERRY A. EBOÑA

APPROVED BY
 ENGR. NELDA T. ALBAÑO

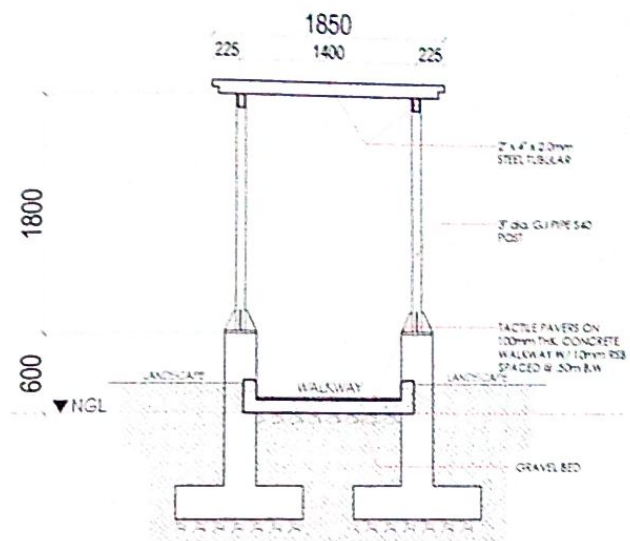
RECOMMENDING APPROVAL
 ENGR. R. MARCELINO

APPROVED BY
 RODRIGO TORRELLA, MABE
 REGIONAL FIELD OFFICE DIRECTOR

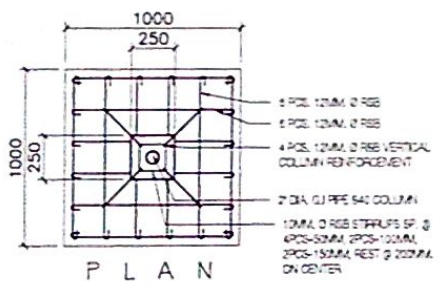
NO. OF SHEETS
 SHEET NO.
 15



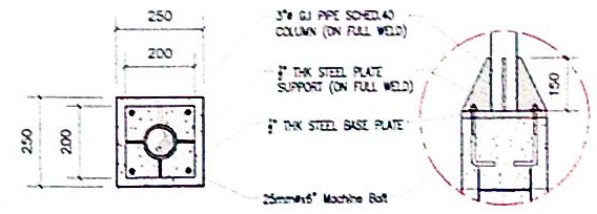
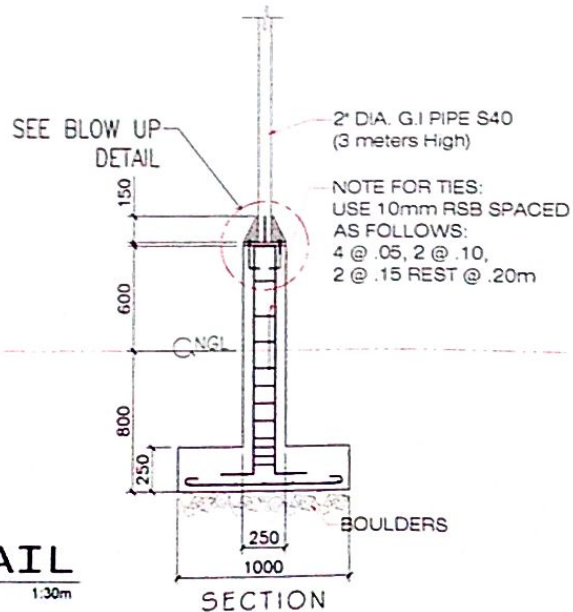
1 PLAN
A 17 SCALE 1:50m



2 SECTION
A 17 SCALE 1:40m



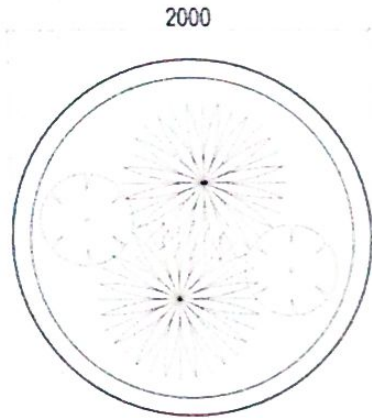
3 FOUNDATION DETAIL
S 17 SCALE 1:30m



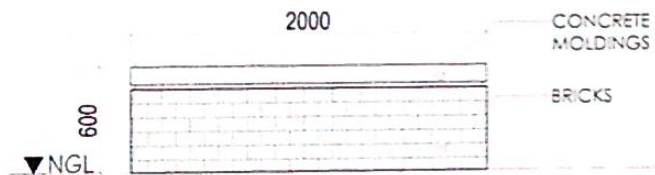
BLOW UP DETAIL

<p>REPUBLIC OF THE PHILIPPINES DEPARTMENT OF AGRICULTURE REGIONAL FIELD OFFICE NO. 5 SAN AGUSTIN, PILL, CAMARINES SUR</p>	<p>PROJECT TITLE REPAIR & IMPROVEMENT OF SLOPE PROTECTION ALONG DA BOUNDARIES (INIBUNAN CREEK)</p>	<p>DESIGNED BY <i>[Signature]</i> AR. JULIUS CEZAR M. PEDIMONTE</p>	<p>CHECKED BY <i>[Signature]</i> DONOFRE MARITZ JR.</p>	<p>VERIFIED BY <i>[Signature]</i> JERRY A. EBOÑA</p>	<p>SUBMITTED BY <i>[Signature]</i> ENGR. NILDA T. ALBAÑO</p>	<p>RECOMMENDING APPROVAL <i>[Signature]</i> LUZ R. MARCELINO</p>	<p>APPROVED BY <i>[Signature]</i> RODOLFO P. TONILLA, MASE</p>	<p>DIST. CONTENT AS SHOWN ABOVE</p>	
	<p>SOURCE OF FUNDS: NDRRM</p>	<p>LOCATION DA RFO 5 COMPOUND, SAN AGUSTIN, PILL, CAMARINES SUR</p>	<p>CAL.</p>	<p>DATE: HEAD-PPF-NFF-EPDSS</p>	<p>DATE: HEAD-PPD</p>	<p>DATE: HEAD-PPD</p>	<p>DATE: HEAD-PPD</p>	<p>DATE: HEAD-PPD</p>	<p>SHEET NO. 17</p>
	<p>FOR OPERATION & EXTENSION</p>							<p>REGIONAL FIELD OFFICE DIRECTOR</p>	

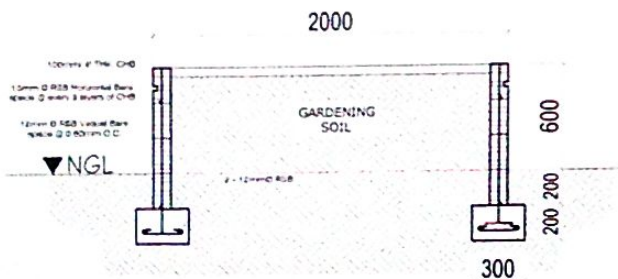
PLANT BOX



P L A N

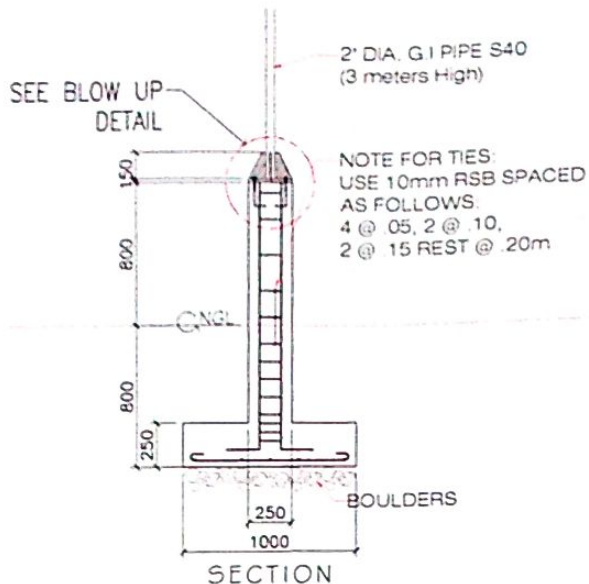


E L E V A T I O N

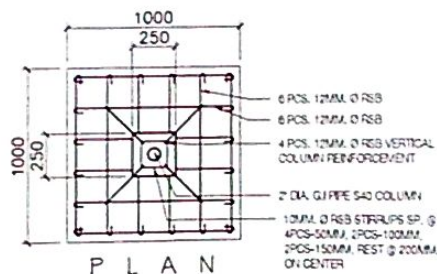


S E C T I O N

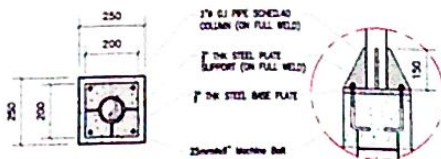
FLAG POLE



S E C T I O N

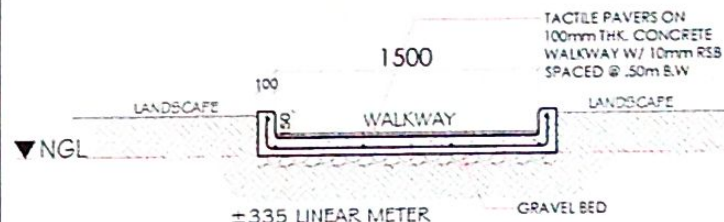


P L A N



B L O W U P

CONCRETE WALKWAY



S E C T I O N



REPUBLIC OF THE PHILIPPINES
DEPARTMENT OF AGRICULTURE
REGIONAL FIELD OFFICE NO. 5
SAN AGUSTIN, PILI, CAMARINES SUR

PROJECT TITLE
**REPAIR & IMPROVEMENT OF
SLOPE PROTECTION ALONG DA
BOUNDARIES (INIBUNAN CREEK)**
SOURCE OF FUND: NDRM
LOCATION
DA RFO 5 COMPOUND, SAN AGUSTIN,
PILI, CAMARINES SUR

DESIGNED BY
**AR. JULIUS CEZAR
M. PEDIMONTE**

CHECKED BY
ONOFRE M. RUIZ JR.
UNIT HEAD FOR RFR-EPOSS

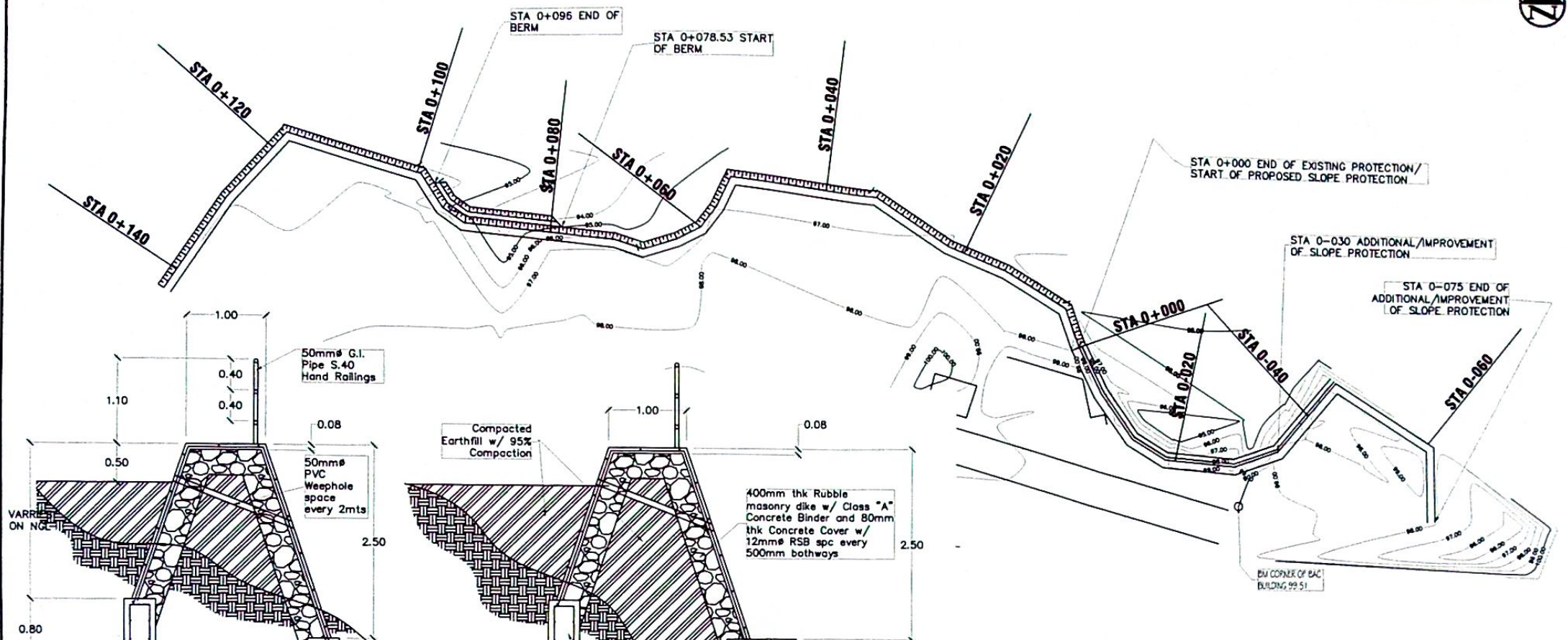
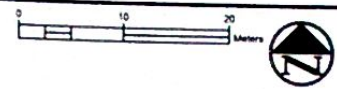
VERIFIED BY
JERRY A. EBOÑA
SECTION HEAD - EPOSS

SUBMITTED BY
ENGR. NILDA T. ALBAÑO
CHIEF - RFRD

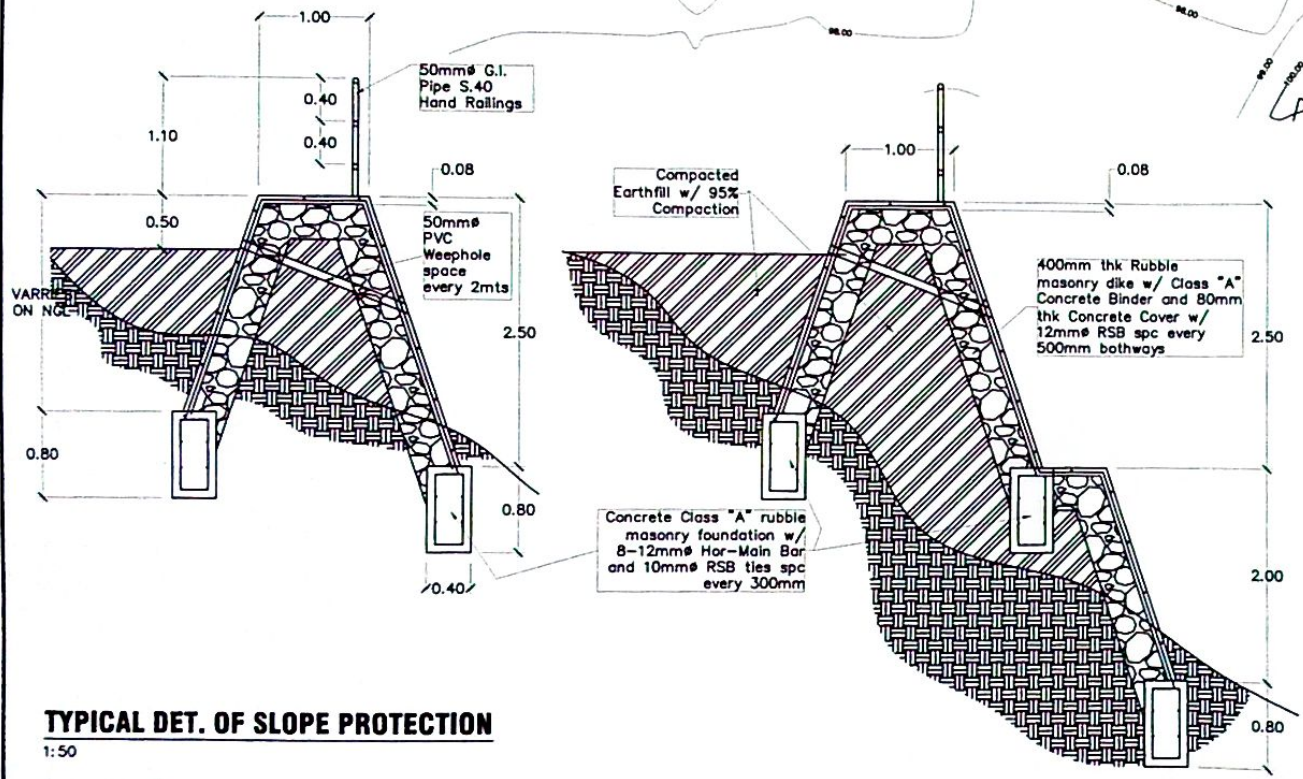
RECOMMENDING APPROVAL
LUZ R. MARCELINO
RFO CO-OPERATION & EXTENSION

APPROVED BY
RODEL TORINILA, MABE
REGIONAL EXECUTIVE DIRECTOR


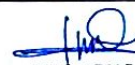


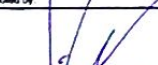
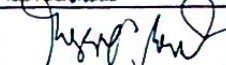

DATE
AS SHOWN
ABOVE
SHEET NO.
18

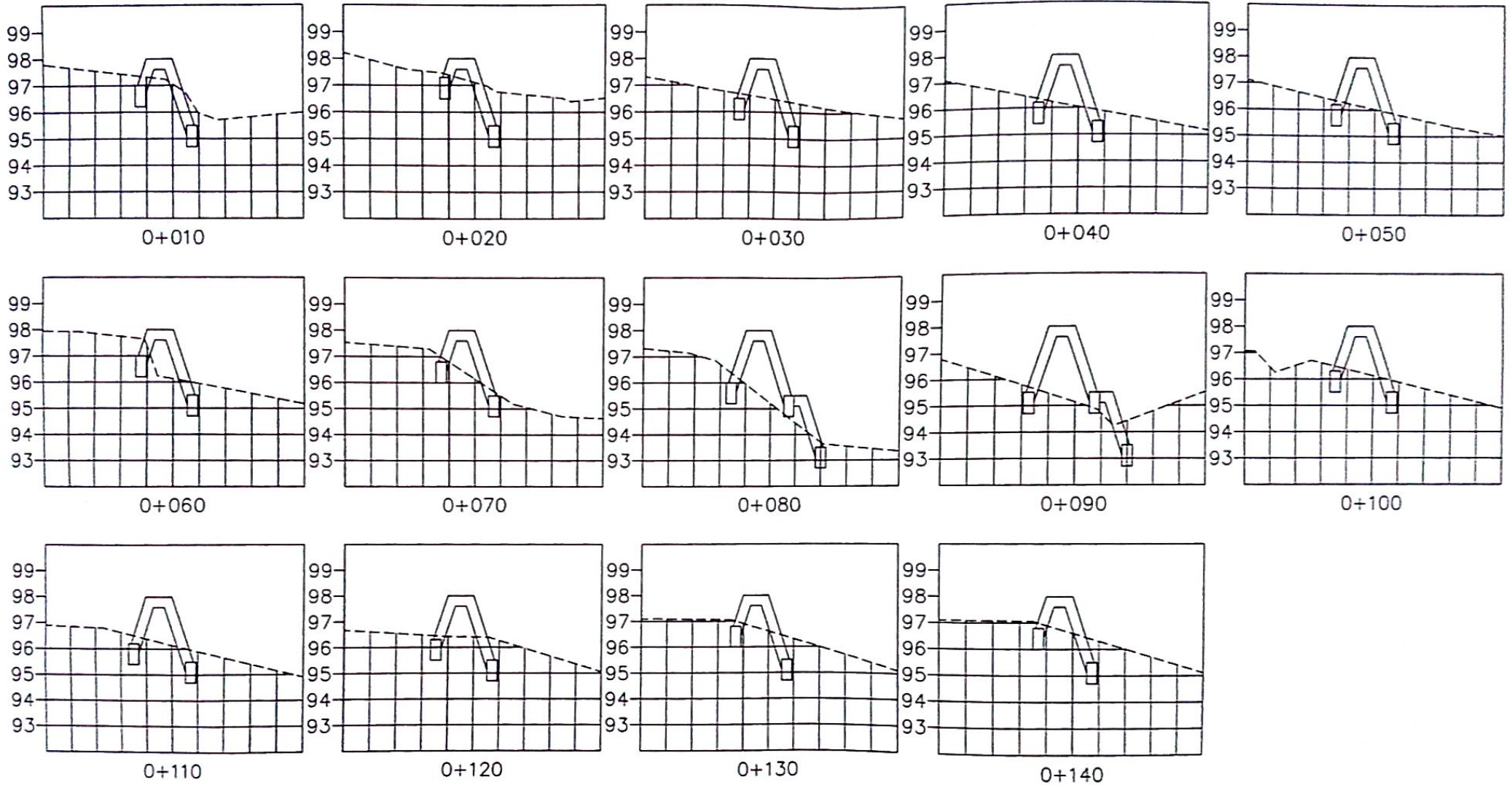


SITE DEVELOPMENT PLAN
1:500

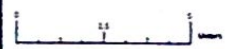







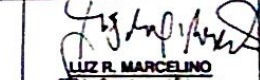
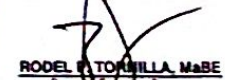

TYPICAL DET. OF SLOPE PROTECTION
1:50

 Department of Agriculture REGIONAL FIELD OFFICE No. 5 SAN AGUSTIN PILL, CAMARINES SUR REGIONAL AGRICULTURAL ENGINEERING DIVISION	Title REPAIR & IMPROVEMENT OF SLOPE PROTECTION ALONG DA BOUNDARIES (IMBUMAN CREEK) DA Compound, San Agustin, Pil., Camarines Sur	Prepared by  JAD R. ATOLE Technical Staff	Checked by  ONOFRE ALQUIZ, JR. Civil Engineer	Reviewed by  JERRY A. EBONA Head, BRSS	Held by  NILDA T. ALBAÑO Chief, RAED	Recommending Approval  EDUARD R. MARCELINO RTD for Operation and Extension	Approved  RODEL P. TORNILA, MaBE Regional Executive Director	Page No. 1 / 2
	Sheet Content AS-SHOWN							



CROSS-SECTION DETAIL EVERY STA.
1:150



 Department of Agriculture REGIONAL FIELD OFFICE No. 5 SAN AGUSTIN PIL. CAGARIÑES SUR REGIONAL AGRICULTURAL ENGINEERING DIVISION	Title REPAIR & IMPROVEMENT OF SLOPE PROTECTION ALONG DA BOUNDARIES (IMBUHAN CREEK) DA Compound San Agustin Pil. Cagariñes Sur	Prepared by  JAD R. ATOLE Technical Staff	Checked by  ONOFRE A. RUZ JR. Civil Engineer	Reviewed by  JERRY A. EBOÑA Head, EPOSS	Noted by  NILDA T. ALBAÑO Chief, RAES	Recommending Approval  LUIZ R. MARCELINO in-charge for Operation and Extension	Approved  RODEL P. TOMILLA, M&BE Regional Engineering Director	Page No. 
	Sheet Content AS-SHOWN							