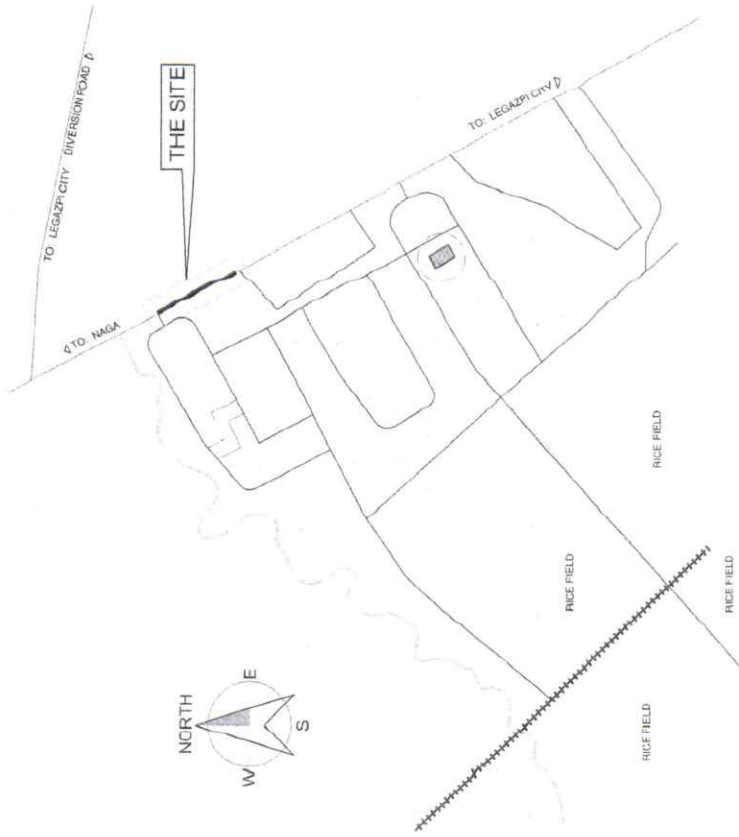
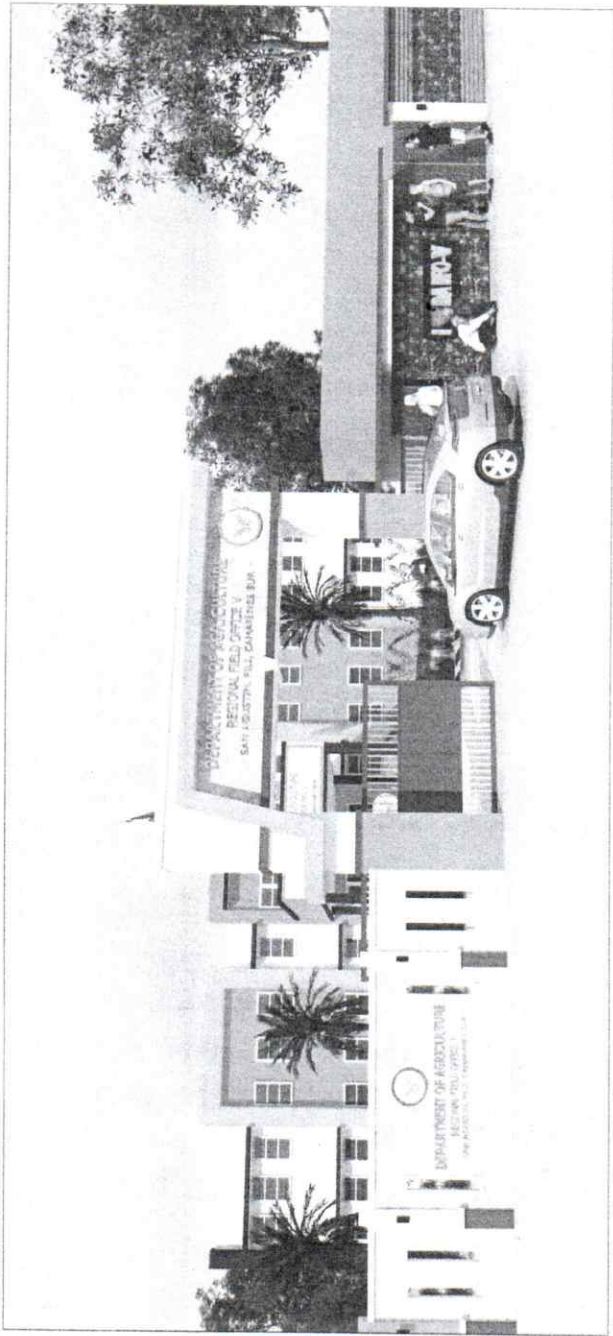


PHASE 1: ±70 LINEAR METER



1
A 1
SCALE
NTS



PERSPECTIVE VIEW 1



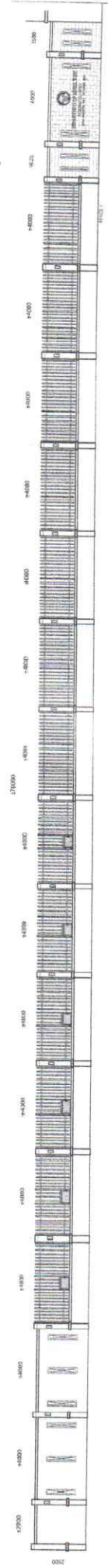
PERSPECTIVE VIEW 2

<p>REPUBLIC OF THE PHILIPPINES DEPARTMENT OF AGRICULTURE REGIONAL FIELD UNIT NO.5 SAN AGUSTIN, PILI, CAMARINES SUR</p>	<p>Prepared by AR. JULIUS CEZAR M. PEDIMONTE CADA DESIGNER</p>	<p>Checked by ENGR. ONOFRE RUIZ JR. Civil Engineer-in-Charge</p>	<p>Reviewed by GILBERT S. SACEDO DICKHEAD BATED</p>	<p>Recommending Approval LUZ R. MARCELINO R.T.O. for Operation</p>	<p>Approved by RODEL P. TERNILAN Supervising Architect</p>	<p>Name of Project REPAIR AND IMPROVEMENT OF DA FENCE WITH GATE</p>	<p>Location DA BECA COMPOUND, SAN AGUSTIN, PILI, CAMARINES SUR</p>	<p>Source of Fund NDRRM</p>	<p>Sheet Contents AS SHOWN</p>
	<p>DAE by AS. PIDS: DATE</p>	<p>Drawn by A 1</p>	<p>DATE</p>						

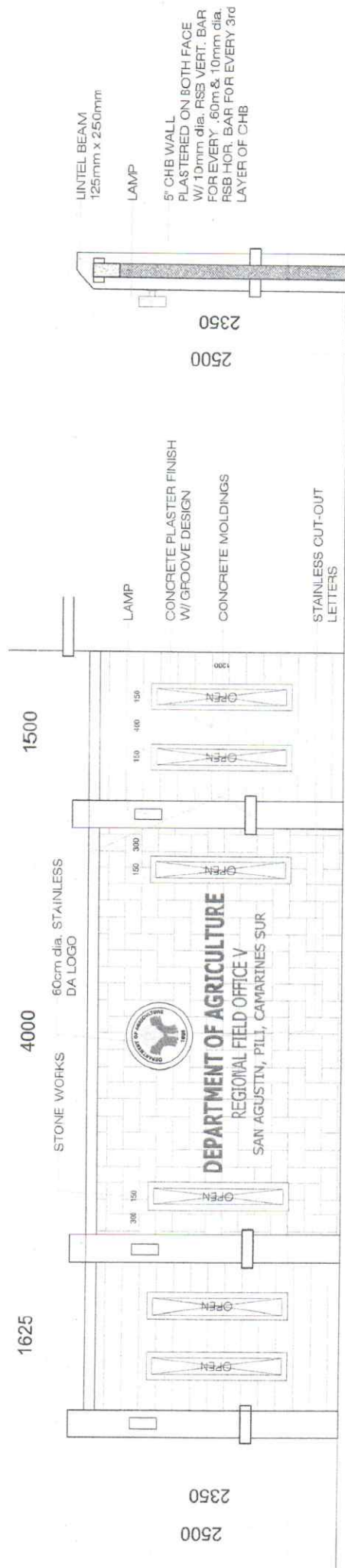
±70 LINEAR METER



FENCE PLAN
SCALE 1:200M



FENCE ELEVATION
SCALE 1:200M



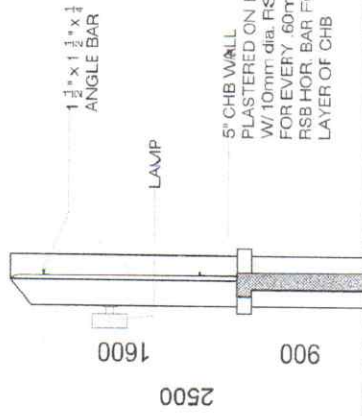
FENCE DETAIL 1
SCALE 1:40M

<p>REPUBLIC OF THE PHILIPPINES DEPARTMENT OF AGRICULTURE REGIONAL FIELD UNIT NO. 5 SAN AGUSTIN, PILI, CAMARINES SUR</p>	<p>Prepared by: AR. JULIUS CEZAR M. PEDIMONTE Civil Engineer in Charge</p>	<p>Checked by: ENR. ONOFRE RUIZ, JR. Civil Engineer in Charge</p>	<p>Reviewed by: GILBERT S. SALCEDO CIC CHARACTERIZED</p>	<p>Recommending Approval: LUIZ R. MARCEANO R.T.D. in Charge</p>	<p>Approved by: RODEL P. TORILLO, A. ARBE Regional Executive Officer</p>	<p>Name of Project: REPAIR AND IMPROVEMENT OF DA FENCE WITH GATE</p>	<p>Location: DA REPLY COMPOUND SAN AGUSTIN PILI, CAMARINES SUR</p>	<p>SOURCE OF FUND: NBIERN Sheet Contour</p>	<p>GD by: A.R. PEDS DATE</p>
	<p>Sheet No. A</p>			<p>2</p>					

1 1/2" x 1 1/2" x 1/4" VERTICAL ANGLE BAR
SPACED @ .15m
4000



1 1/2" x 1 1/2" x 1/4" HORIZONTAL
ANGLE BAR



5" CHB WALL
PLASTERED ON BOTH FACE
W/ 10mm dia. RSB VERT. BAR
FOR EVERY .60m & 10mm dia.
RSB HOR. BAR FOR EVERY 3rd
LAYER OF CHB

CONCRETE MOLDINGS

2500
1600
900

LAMP

1 1/2" x 1 1/2" x 1/4"
ANGLE BAR

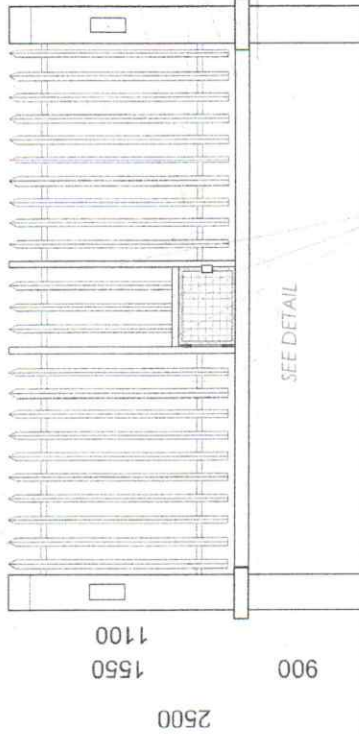
5" CHB WALL
PLASTERED ON BOTH FACE
W/ 10mm dia. RSB VERT. BAR
FOR EVERY .60m & 10mm dia.
RSB HOR. BAR FOR EVERY 3rd
LAYER OF CHB

FENCE DETAIL 2

SCALE 1:40M



4000
1 1/2" x 1 1/2" x 1/4" VERTICAL ANGLE BAR
SPACED @ .15m
600



1 1/2" x 1 1/2" x 1/4" HORIZONTAL
ANGLE BAR

LAMP

CONCRETE MOLDINGS

5" CHB WALL
PLASTERED ON BOTH FACE
W/ 10mm dia. RSB VERT. BAR
FOR EVERY .60m & 10mm dia.
RSB HOR. BAR FOR EVERY 3rd
LAYER OF CHB

1" x 2" x 2.0mm STEEL
TUBULAR

SEE DETAIL

6 SETS

2500
1600
900

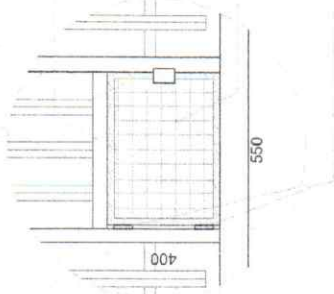
1" x 2" x 2.0mm STEEL
TUBULAR

12mm SQUARE BAR

FABRICATED LOCKSET

2" HEAVY DUTY STEEL
MATTING

FABRICATED HINGES



LAMP

1 1/2" x 1 1/2" x 1/4"
ANGLE BAR

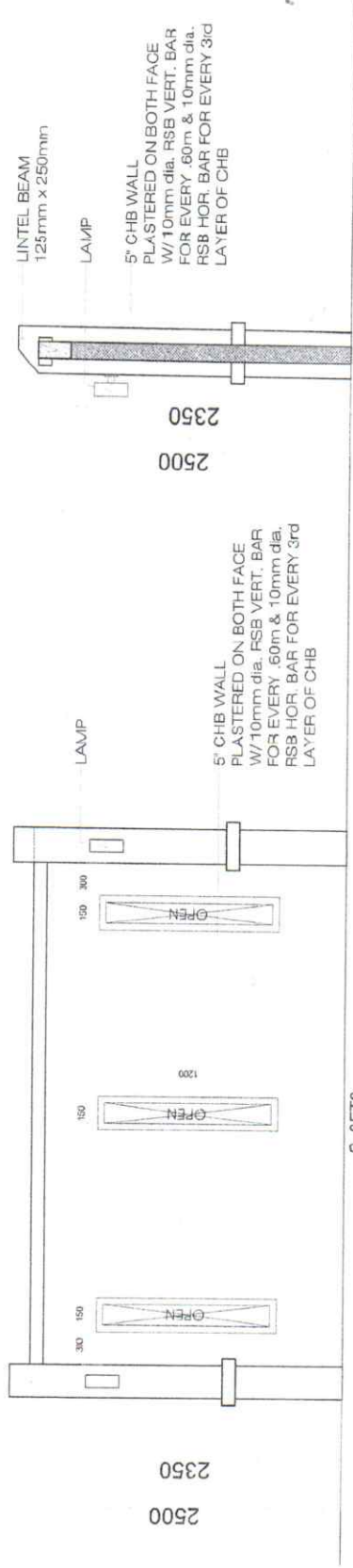
5" CHB WALL
PLASTERED ON BOTH FACE
W/ 10mm dia. RSB VERT. BAR
FOR EVERY .60m & 10mm dia.
RSB HOR. BAR FOR EVERY 3rd
LAYER OF CHB

FENCE DETAIL 3

SCALE 1:40M



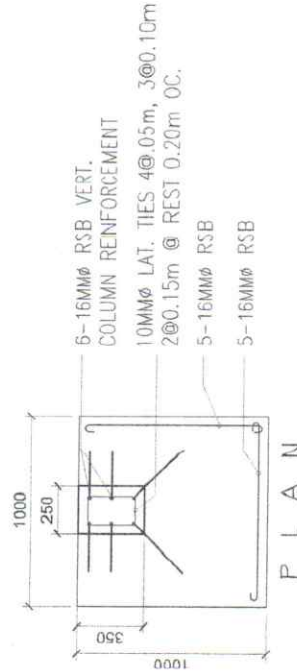
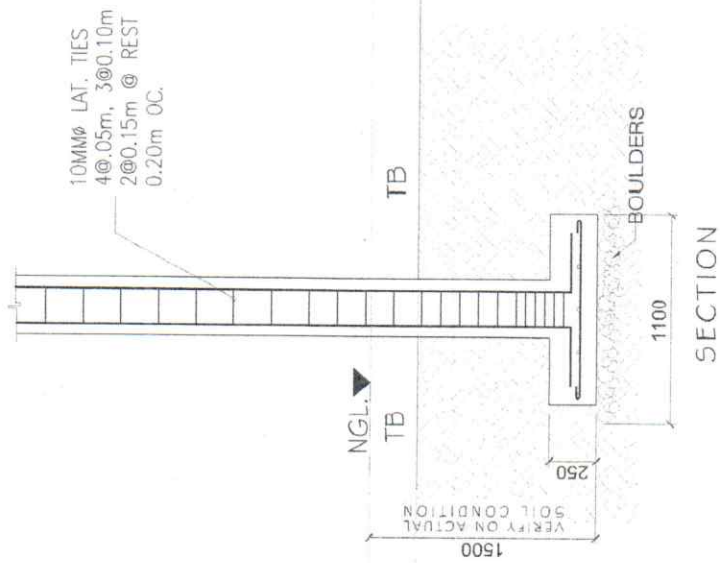
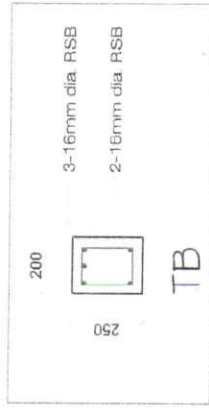
4000



FENCE DETAIL 4

1:40M

1
A/4 SCALE



FOUNDATION DETAIL

1:30M

2
A/4 SCALE

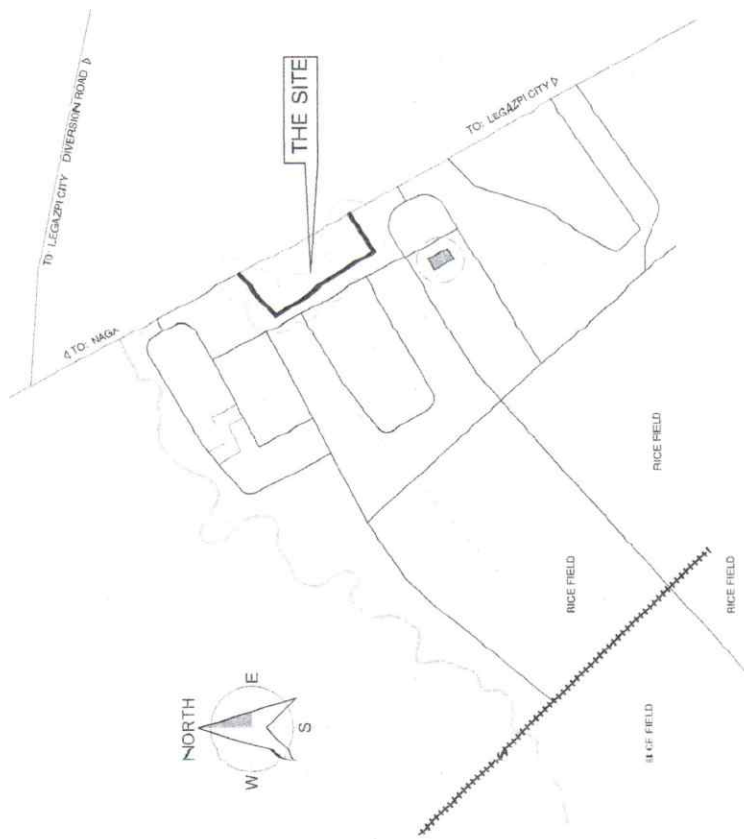
FOUNDATION DETAIL

1:30M

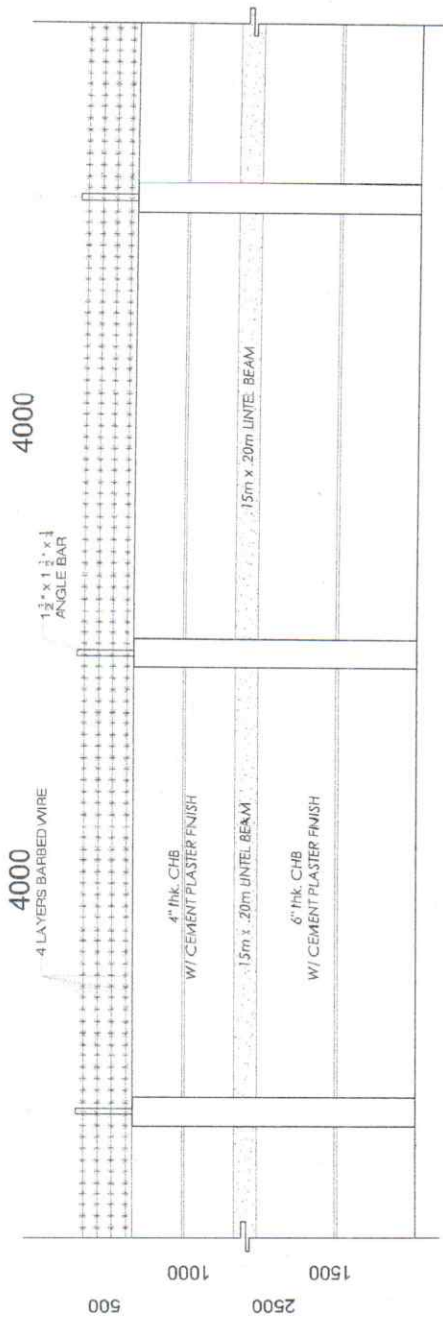
3
A/4 SCALE

<p>REPUBLIC OF THE PHILIPPINES DEPARTMENT OF AGRICULTURE REGIONAL FIELD UNIT NO. 5 SAN AGUSTIN, PILLI, CAMARINES SUR</p>	<p>Prepared by:</p> <p>AR. JUAN S. CIZAR, PEDIMONTE CIB & DESIGN</p>	<p>Checked by:</p> <p>ENGR. ONYIA M. RIZ JR. Civil Engineering</p>	<p>Reviewed by:</p> <p>GILBERT S. SALCEDO CIB & DESIGN</p>	<p>Recommending Approval:</p> <p>LUZ R. MARCELINO CIB & DESIGN</p>	<p>Approved by:</p> <p>RODIL P. TORNA CIB & DESIGN</p>	<p>Name of Project:</p> <p>REPAIR AND IMPROVEMENT OF DA FENCE WITH GATE</p>	<p>Location:</p> <p>DA FIELD COMPOUND, SAN AGUSTIN, PILLI, CAMARINES SUR</p>	<p>Drawn by:</p> <p>AR. PEDYS</p>	<p>Date:</p>	<p>Sheet No.:</p> <p>A</p>
	<p>DA Field Office, San Agustin, Pili, Camarines Sur</p>									

PHASE 2: ±165 LINEAR METER

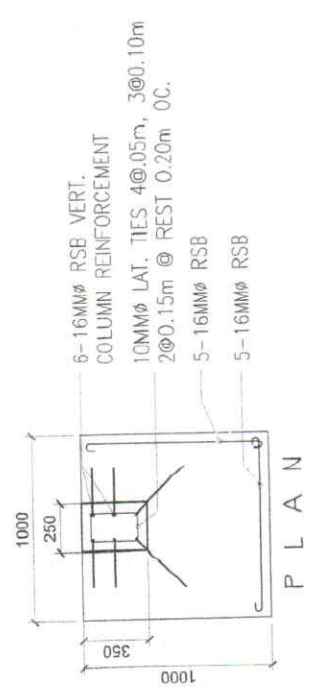
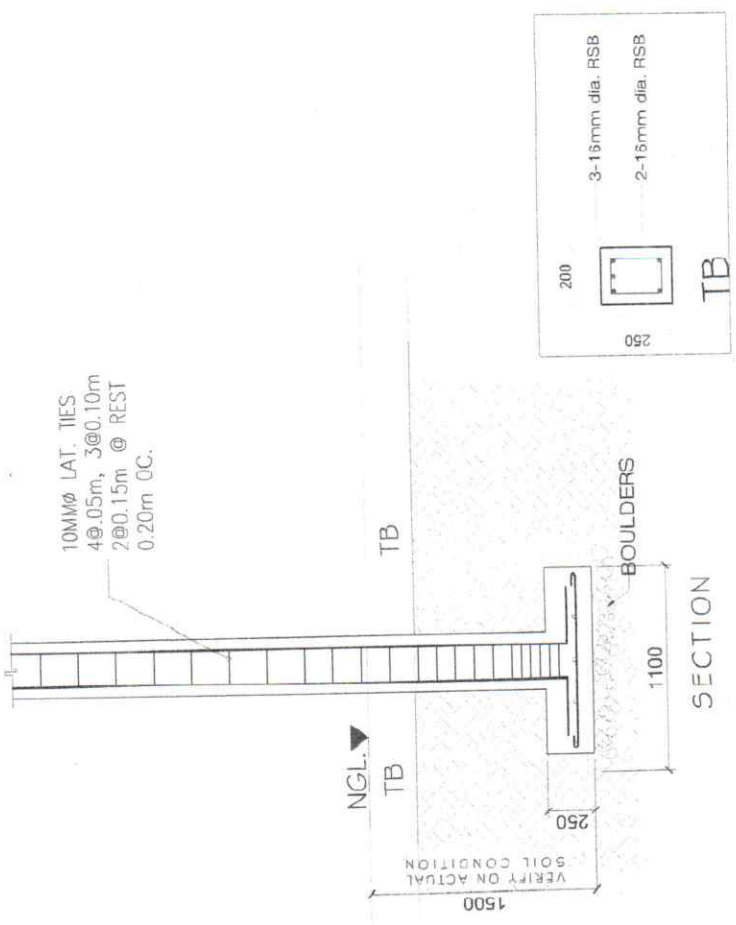


1 VICINITY MAP
A 5 SCALE
NTS

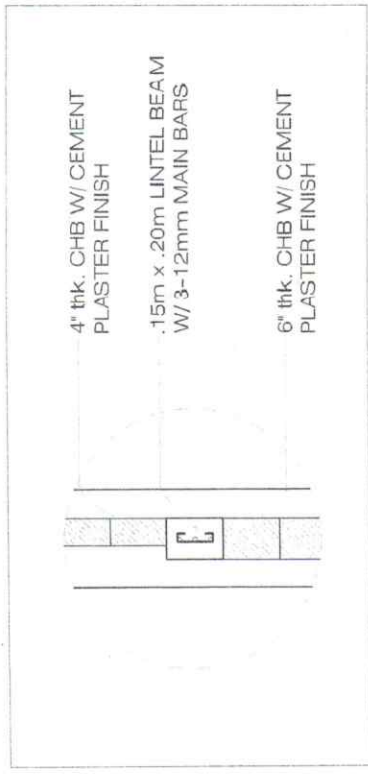


2 FENCE ELEVATION
A 5 SCALE
1:500

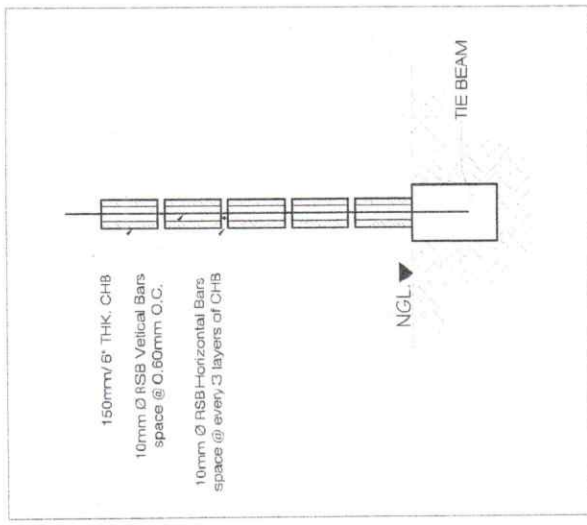
<p>REPUBLIC OF THE PHILIPPINES DEPARTMENT OF AGRICULTURE REGIONAL FIELD UNIT NO. 5 SAN AGUSTIN, PILI, CAMARINES SUR</p>	<p>Proposed by: AR. JULIUS CEZAR M. PEDIMONTE C.A.D. & ENGR.</p>	<p>Checked by: ENGR. ONOFRE RIZ JR. Civil Engineer in Charge</p>	<p>Reviewed by: JESKY A. EBOÑA EPDM HEAD</p>	<p>Recommended by: LUZ R. MARCELIÑO R.T.M. and Operator</p>	<p>Approved by: RODEL P. LARANJA, MBE Regional Office Director</p>	<p>Name of Project: REPAIR AND IMPROVEMENT OF DA FENCE WITH GATE</p> <p>Location: DA RFOY COTABATO, SAN AGUSTIN, PILI, CAMARINES SUR</p> <p>SOURCE OF FUND: NDRRM Sheet Contable</p>	<p>Drawn by: AR. PEIYU</p> <p>DATE</p> <p>Sheet No. A 5</p>
	<p>AS SHOWN</p>						



FOUNDATION DETAIL
SCALE 1:30M



LINTEL BEAM DETAIL
SCALE 1:20M



WALL DETAIL
SCALE 1:20M

<p>DEPARTMENT OF AGRICULTURE REGIONAL FIELD UNIT NO. 5 SAN AGUSTIN, PILI, CAMARINES SUR</p>	<p>Prepared by</p> <p>AR. ALIUS CEZAR M. PEDIMONTE CIVIL DESIGN</p>	<p>Checked by</p> <p>ENGR. ONYIA W. RIZ JR. Civil Engineer in Charge</p>	<p>Reviewed by</p> <p>GILBERT S. SALCEDO CIVIL ENGINEER</p>	<p>Recommending Approval</p> <p>LUZ R. MARCELINO R.T.D. for Approval</p>	<p>Approved by</p> <p>RODEL P. FORTIN, A. MABE Registered Professional Engineer</p>	<p>Name of Project:</p> <p>REPAIR AND IMPROVEMENT OF DA FENCE WITH GATE</p>	<p>Drawn by:</p> <p>AR. FIEDS</p>
	<p>Location:</p> <p>DA IBCA COMPOUND, SAN AGUSTIN, PILI, CAMARINES SUR</p>	<p>Source of Fund:</p> <p>IBDRM</p>	<p>Sheet No.:</p> <p>A 7</p>	<p>Date:</p>	<p>Sheet Contents:</p> <p>AS SHOWN</p>	<p>Scale:</p> <p>1:20M</p>	<p>Scale:</p> <p>1:20M</p>

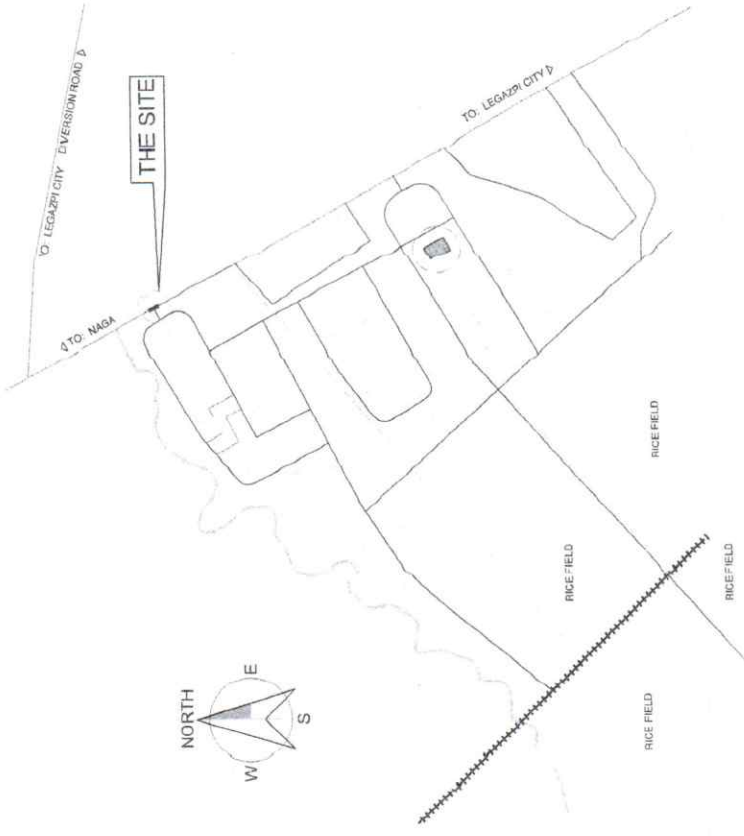
ARCH & GATE 1



PERSPECTIVE VIEW 1

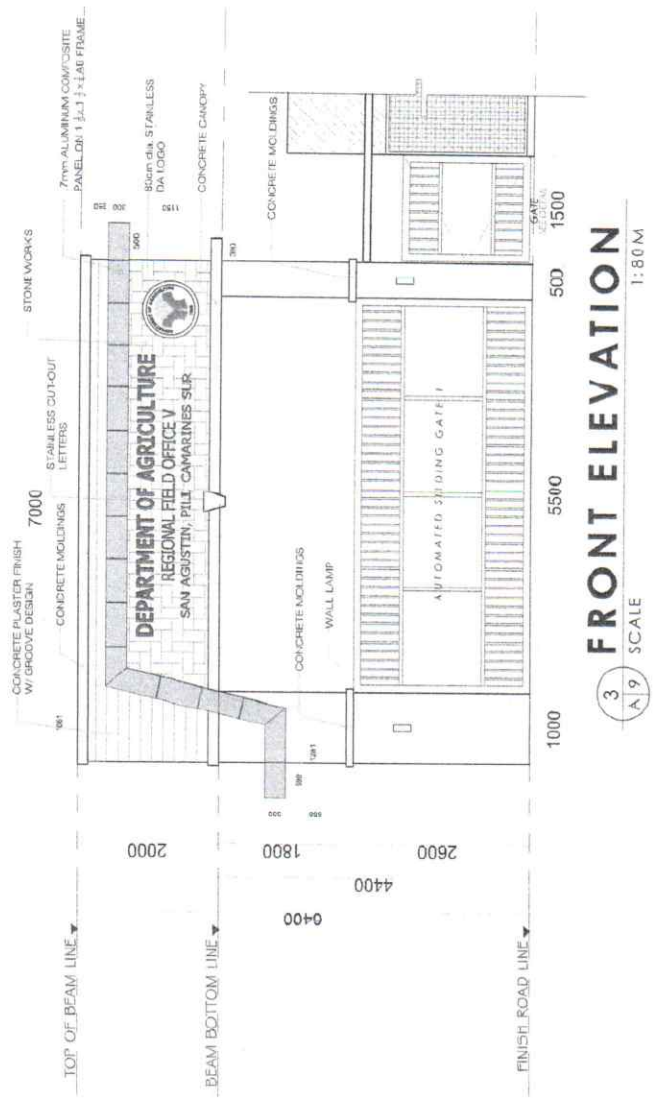


PERSPECTIVE VIEW 2

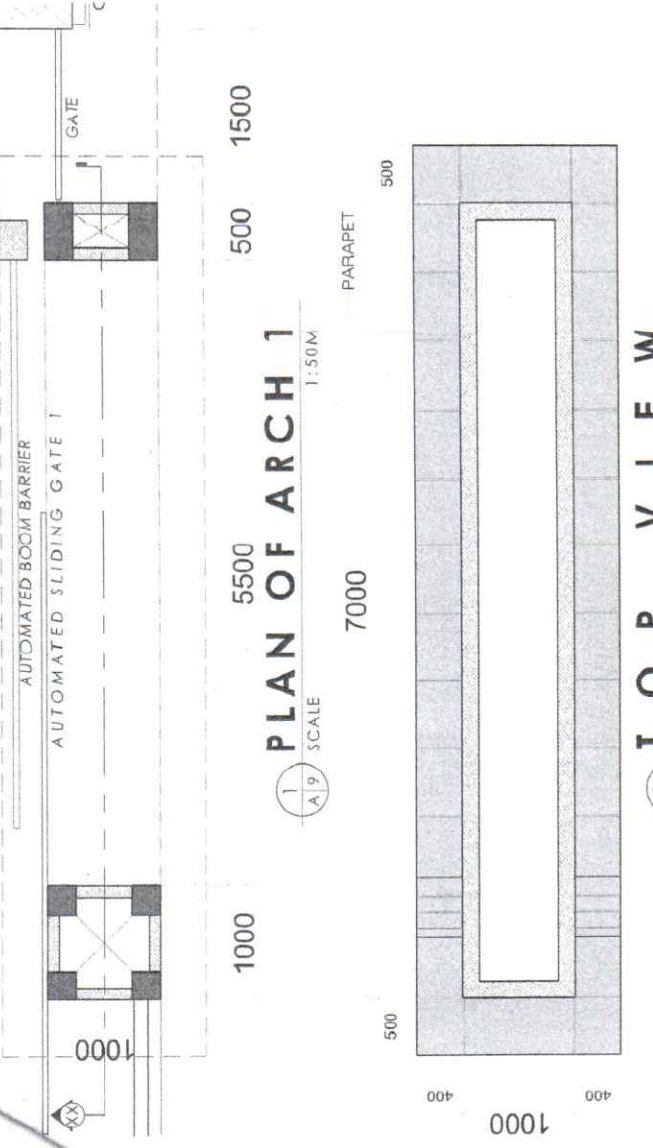


1
A 1 SCALE
VICINITY MAP
NTS

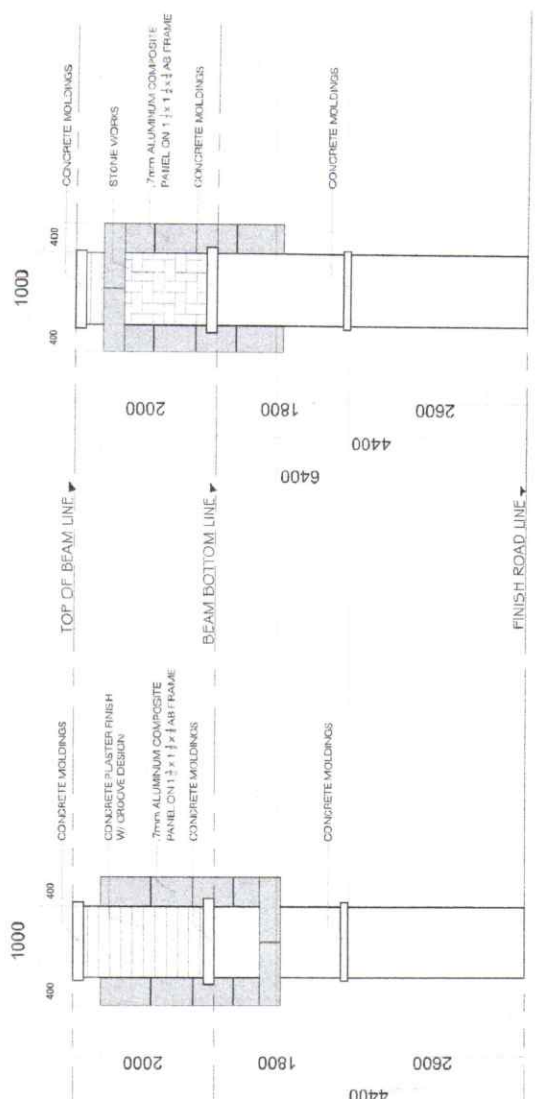
<p>REPUBLIC OF THE PHILIPPINES DEPARTMENT OF AGRICULTURE REGIONAL FIELD UNIT NO.5 SAN AGUSTIN, PILI, CAMARINES SUR</p>	<p>Prepared by: A.R. JULIUS CEZAR N. PEDIMONTE LAND ARCHITECT</p>	<p>Checked by: ENGR. ONOPEL B. JR. Civil Engineer in Charge</p>	<p>Reviewed by: GILBERT S. SALCEDO DCE, Civil Board</p>	<p>Recommending Approval: LUZ R. MARCELINO RTD, in Operation</p>	<p>Approved by: RODEL P. TORALDO, MAABE Regional Director</p>	<p>Name of Project: REPAIR AND IMPROVEMENT OF DA FENCE WITH GATE</p> <p>Location: DA RIVERLY COMPOUND, SAN AGUSTIN, PILI, CAMARINES SUR</p> <p>Source of Fund: NRRRI Sheet Contain: AS SHOWN</p>	<p>Drawn by: A</p> <p>Scale: 8</p>
	<p>DATE:</p>	<p>DATE:</p>	<p>DATE:</p>	<p>DATE:</p>	<p>DATE:</p>	<p>DATE:</p>	



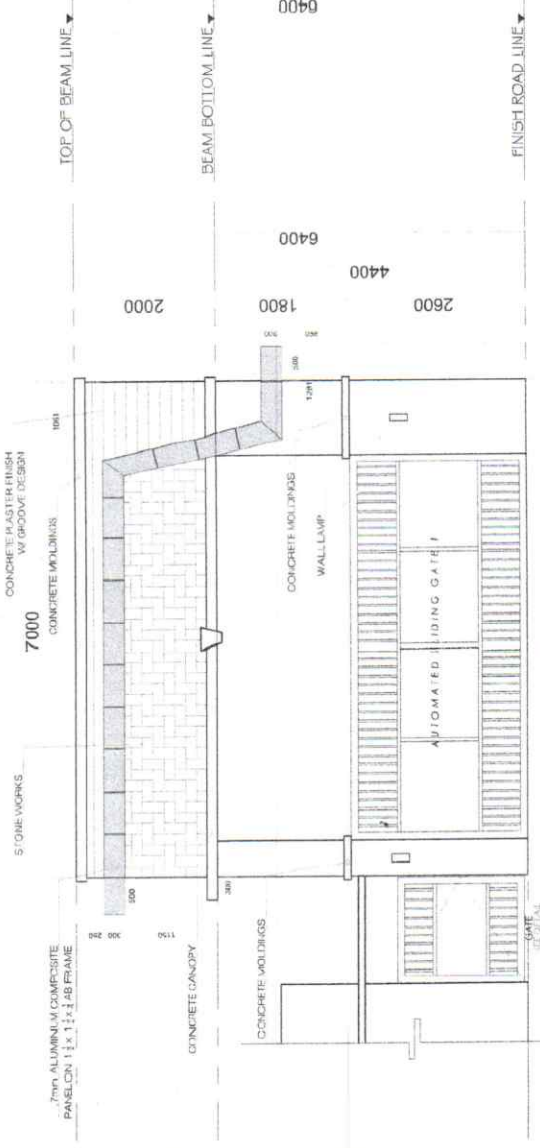
FRONT ELEVATION
 SCALE 3/19
 1:80 M



TOP VIEW
 SCALE 2/19
 1:50 M



LEFT SIDE ELEVATION
 SCALE 5/19
 1:80 M



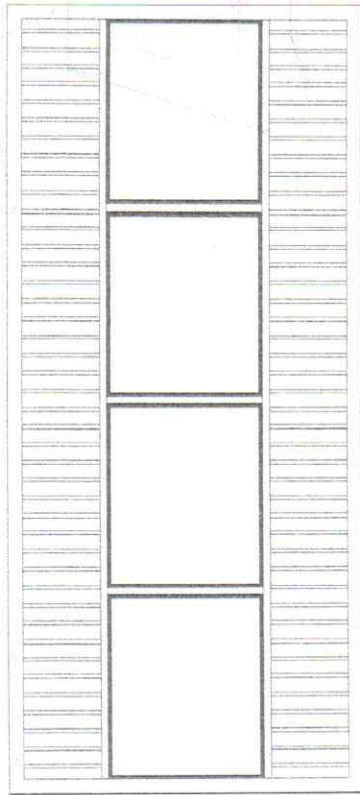
REAR ELEVATION
 SCALE 4/19
 1:80 M

RIGHT SIDE ELEVATION
 SCALE 6/19
 1:80 M

<p>REPUBLIC OF THE PHILIPPINES DEPARTMENT OF AGRICULTURE REGIONAL FIELD UNIT NO.5 SAN AGUSTIN, PILI, CAMARINES SUR</p>	<p>Prepared by: AR. JULIUS CEZAR M. REDMONITE CAD DESIGNER</p>	<p>Checked by: ENGR. ONYIAH R. HUIJIR CIVIL ENGINEER IN CHARGE</p>	<p>Recommended/Approved by: LIZA R. MARCELINO ARCHITECT</p>	<p>Approved by: RODIEL P. BENILDA MABE Regional Water Director</p>	<p>Name of Project: REPAIR AND IMPROVEMENT OF DA FENCE WITH GATE</p>	<p>CD by: AR, RDS</p>
	<p>Location: DA RPOV COMPOUND, SAN AGUSTIN, PILI, CAMARINES SUR</p>	<p>Source of Fund: NORRMI</p>	<p>Sheet No. 9</p>	<p>Sheet Date: A</p>	<p>AS SHOWN</p>	

5500

- 2 x 4 x 1.5mm STEEL TUBULAR
- 2 x 2 x 1.5mm STEEL TUBULAR
- 2.0 mm G.I PLAIN SHEET
- 1" x 1" x 1/8" ANGLE BAR
- 1" x 1" x 1.5mm STEEL TUBULAR SPACED @ 125mm O.C



AUTOMATED SLIDING GATE DETAIL
1:40 M

2
A/10 SCALE

2500



SECTION THRU 'XX'
1:80 M

1
A/10 SCALE

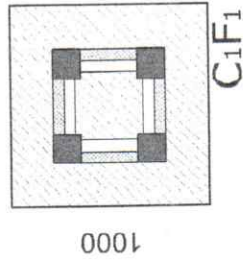
- 2 x 4 x 1.5mm STEEL TUBULAR
- 2 x 2 x 1.5mm STEEL TUBULAR
- 1.5 mm G.I PLAIN SHEET
- 1" x 1" x 1/8" ANGLE BAR
- 1" x 1" x 1.5mm STEEL TUBULAR SPACED @ 125mm O.C
- FABRICATED HINGES



SWING GATE FOR HUMAN DETAIL
1:40 M

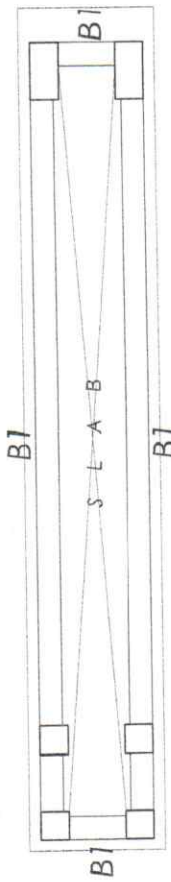
3
A/10 SCALE

<p>REPUBLIC OF THE PHILIPPINES DEPARTMENT OF AGRICULTURE REGIONAL FIELD UNIT NO. 5 SAN AGUSTIN, PILI, CAMARINES SUR</p>		Prepared by: A.R. JUANES CEZAR N. PEDIMONTE CAD & DESIGN	Checked by: ENGR. ONYIA P. HUIZAR Civil Engineer in Charge	Received by: GILBERT S. SALCEDO ORC-CHIEF, RAED	Recommending Approval: LUZ R. MARCELINE R.T.D. for Operation	Approved by: RODEL P. JORNAYALA, MBE Regional Director	Name of Project: REPAIR AND IMPROVEMENT OF DA FENCE WITH GATE	GDO by: A.R. JUANES DATE:
Location: DA RFO-V COMPLENDI, SAN AGUSTIN, PILI, CAMARINES SUR		Sheet No.: A 10		SOURCE OFFICE: NRR/RA Sheet Contents: AS SHOWN		SHEET NO. 10		

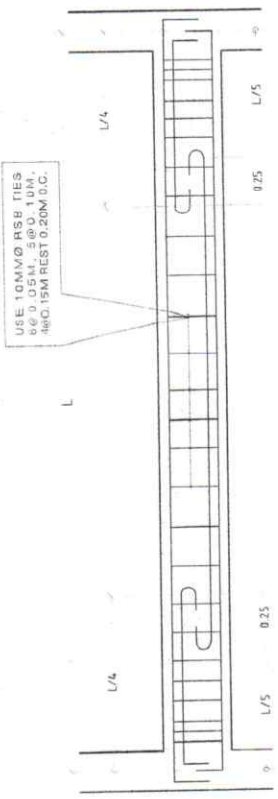


C1F1

FOUNDATION PLAN
SCALE 1:50M



BEAM FRAMING PLAN
SCALE 1:50M



TB



AT SUPPORT



AT MID SPAN

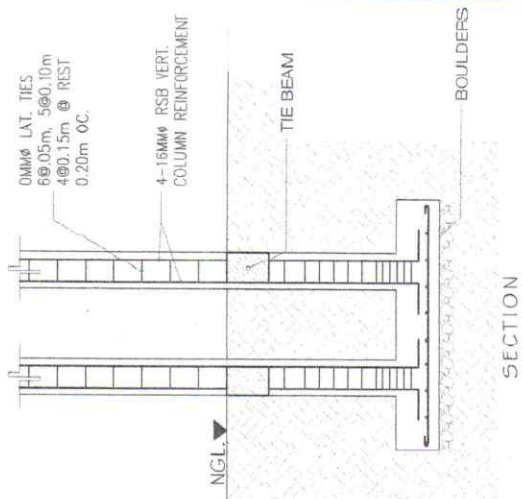


AT MID SPAN



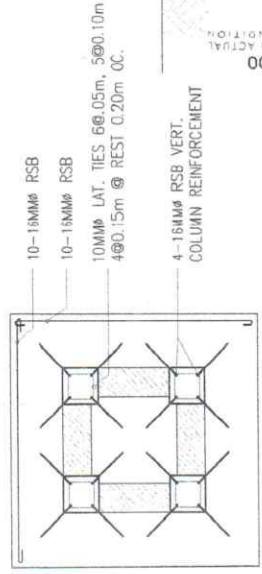
AT SUPPORT

B1



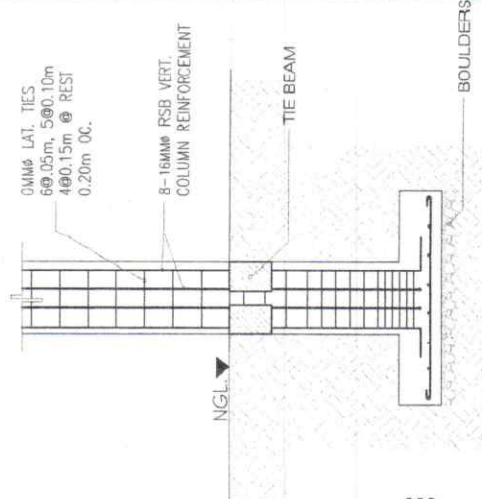
SECTION

FOUNDATION DETAIL 1
SCALE 1:40M



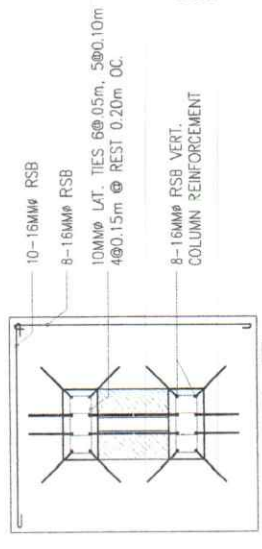
C1F1

PLAN



SECTION

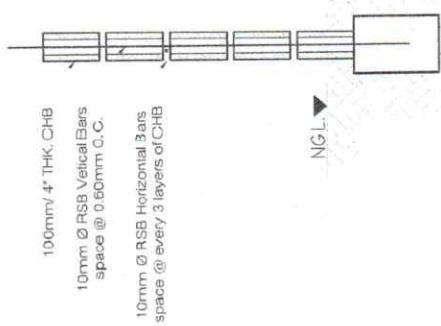
FOUNDATION DETAIL 2
SCALE 1:40M



C2F2

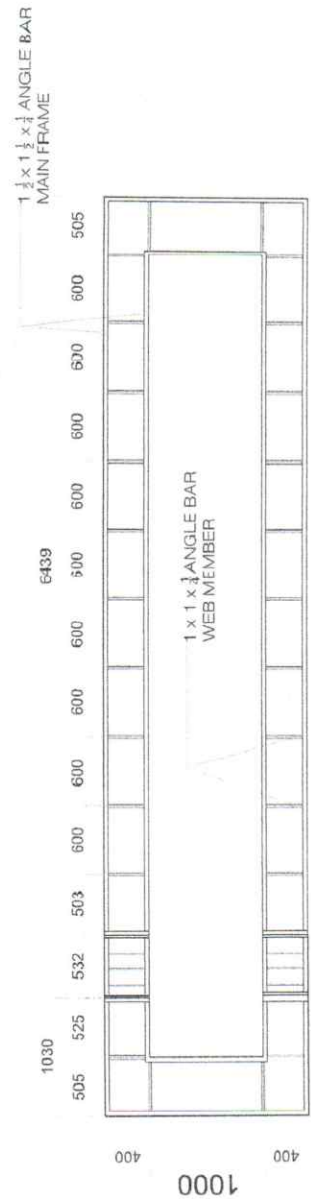
PLAN

<p>REPUBLIC OF THE PHILIPPINES DEPARTMENT OF AGRICULTURE REGIONAL FIELD UNIT NO.5 SAN AGUSTIN, PILL CANARINES SUR</p>		<p>Prepared by: A.R. JULIUS CEZAR M. PRIMONTE C.A.B. DESIGN</p>	<p>Checked by: ENGR. ONYIA MUIZ JR. Civil Engineer in Charge</p>	<p>Reviewed by: JERRY A. EBOÑA ENGINEER IN CHARGE</p>	<p>Recommended Approve: LUZ R. MARCELINO RTD, in-charge</p>	<p>Approved by: RODEL P. MARINIA MAÑE Registered Professional Engineer</p>	<p>Name of Project: REPAIR AND IMPROVEMENT OF DA FENCE WITH GATE</p> <p>Location: DA RIVER V. COMPOUND, SAN AGUSTIN, PILL CANARINES SUR</p> <p>SCOPE OF FUND: NRRHN</p> <p>Sheet Contents: AS SHOWN</p>	<p>Drawn by: S</p> <p>DATE: 11</p>
---	--	---	--	---	---	--	---	--

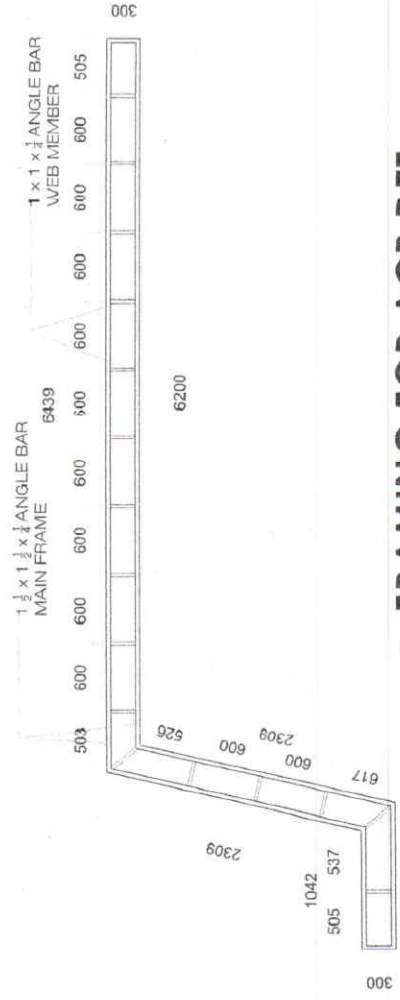


100mm x 4 THK. CHB
 10mm \varnothing RSB Vertical Bars
 space @ 0.60m C.C.
 10mm \varnothing RSB Horizontal Bars
 space @ every 3 layers of CHB

WALL FOOTING DET.
 SCALE 1:20M



TOP VIEW



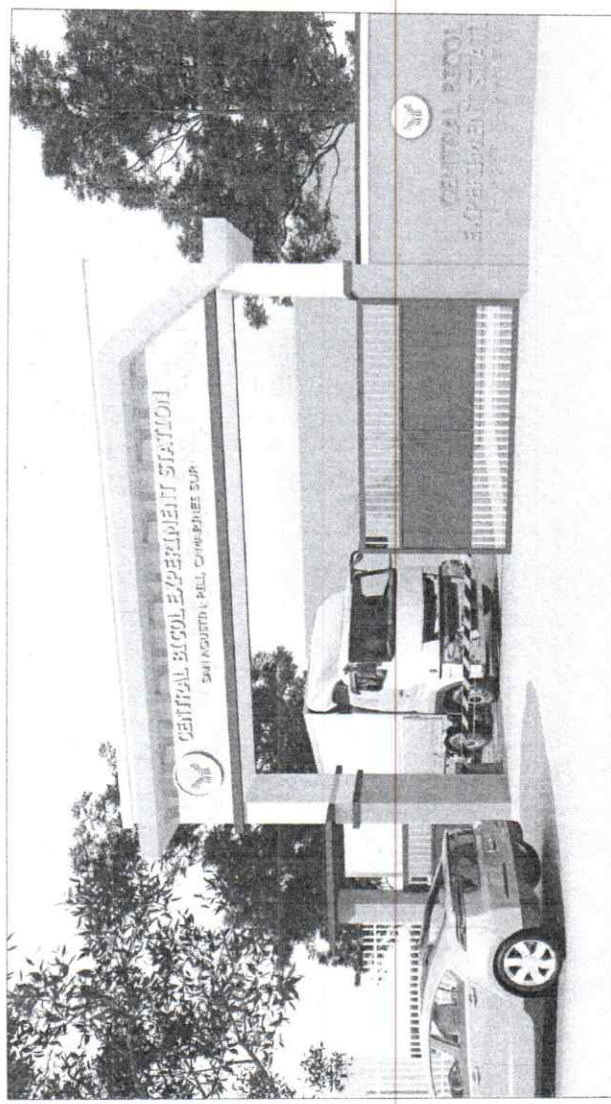
FRAMING FOR ACP DET.
 SCALE 1:50M

Prepared by:	AR. JULIUS CEZAR M. PEDIMONTE CADA DESIGN	Checked by:	ENGR. ONOFRE R. LIZ JR. CIVIL Engineer in Charge	Reviewed by:	GILBERT S. SALCEDO O.C. Chief RAID	Recommending Approval:	LIZ R. MARCEJNO R TD. in Charge	Approved by:	RODEL P. JORNINA, MBE Regional Executive Officer	Name of Project:	REPAIR AND IMPROVEMENT OF DA FENCE WITH GATE	Case No.:	AM. REIDS
										Location:	DA BFCV COMPOUND SAN AGUSTIN, PILI, CAMARINES SUR	Date:	
										Source of Fund:	NTRIM	Sheet No.:	S 12
										Sheet Contents:	AS SHOWN		

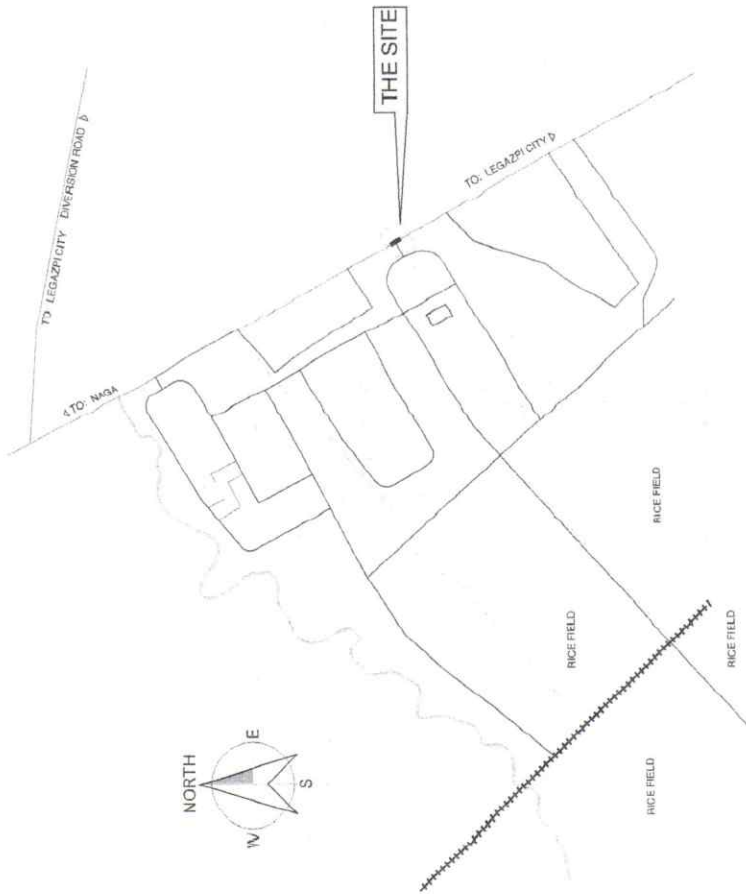
ARCH & GATE 2



PERSPECTIVE VIEW 1



PERSPECTIVE VIEW 2

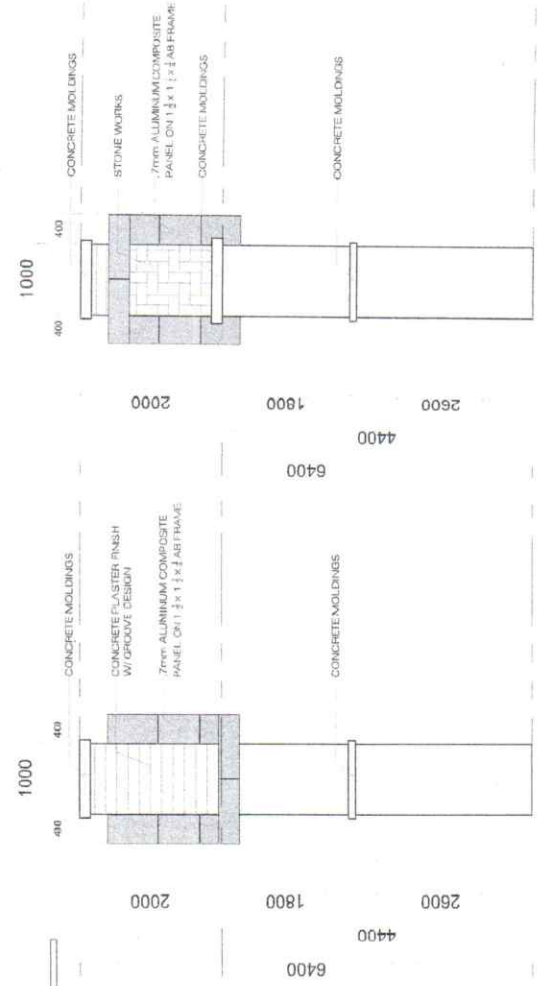


1
A 1 SCALE
VICINITY MAP
NTS

<p>REPUBLIC OF THE PHILIPPINES DEPARTMENT OF AGRICULTURE REGIONAL FIELD UNIT NO. 5 SAN AGUSTIN, PILI, CAMARINES SUR</p>	<p>Requested by:</p> <p>AL. JUAN S. CEZAR V. PEDMONTE CAD & ESTD.</p>	<p>Checked by:</p> <p>ENGR. ONOFRE RUIZ JR. Civil Engineer in-Charge</p>	<p>Reviewed by:</p> <p>GIL BEZ FAY SALCEDO UC-Client In-lead</p>	<p>Recommending Approval:</p> <p>LUZ R. MARCELINE RTO In-Operations</p>	<p>Approved by:</p> <p>KODEL P. ZANTAL A. MABE Registered Professional Engineer</p>	<p>Name of Project:</p> <p>REPAIR AND IMPROVEMENT OF DA FENCE WITH GATE</p>	<p>GD by:</p> <p>A.R. PEDES DATE:</p>
	<p>Location:</p> <p>DA RHCY COMPOUND, SAN AGUSTIN, PILI, CAMARINES SUR</p> <p>SOURCE OF FUND: NDRRM</p> <p>Street Corridor:</p> <p>AS SHOWN</p>	<p>Sheet No.:</p> <p>A / 13</p>					

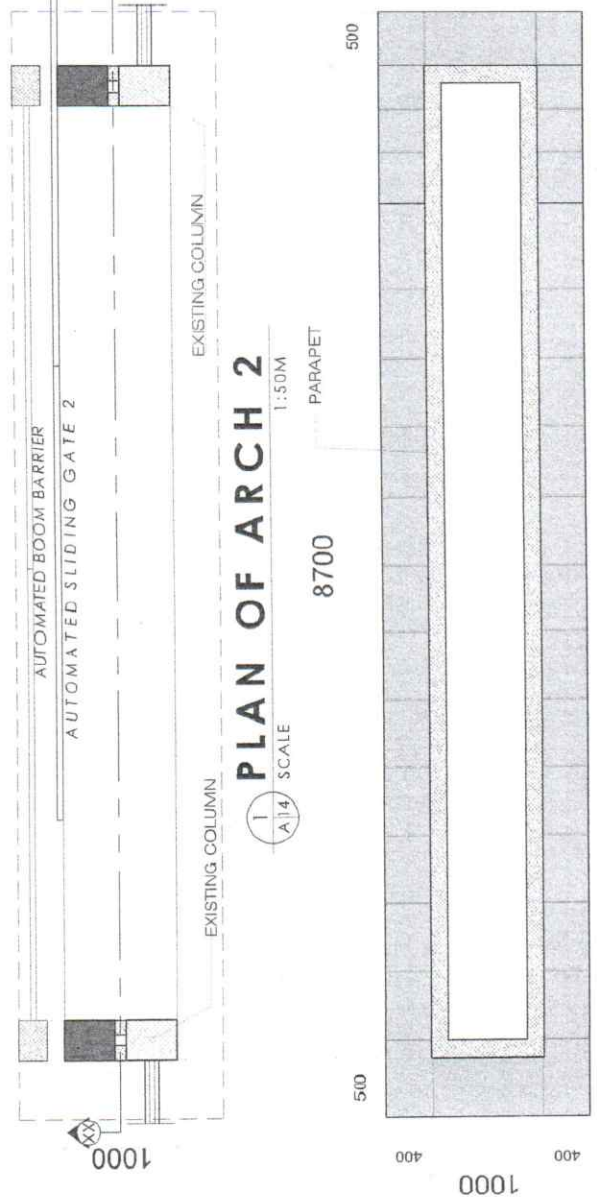


1 PLAN OF ARCH 2
SCALE 1:50M
A14

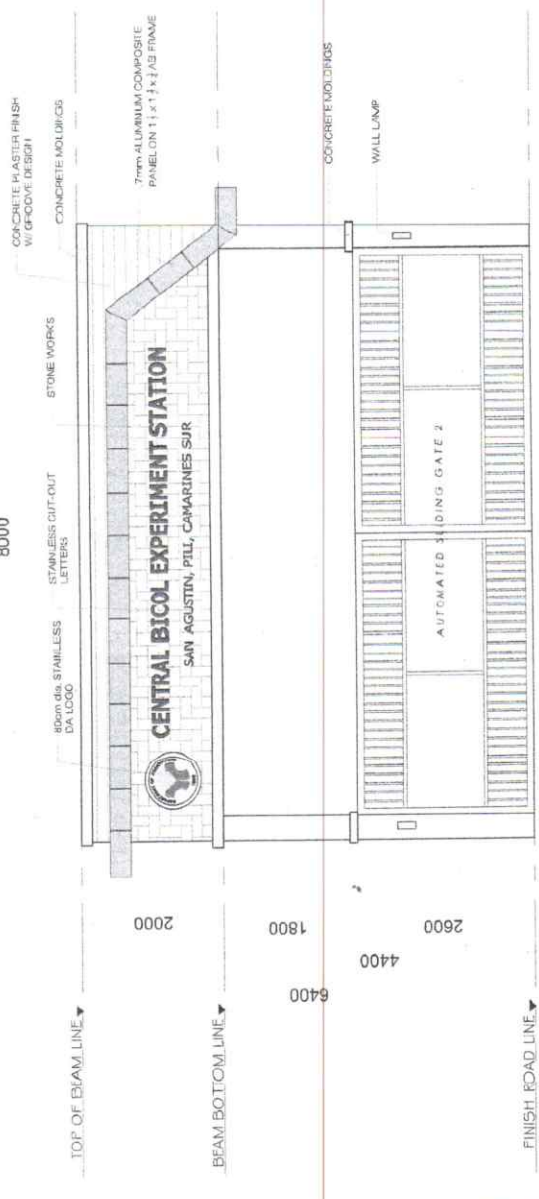


4 RIGHT ELEVATION
SCALE 1:80M
A14

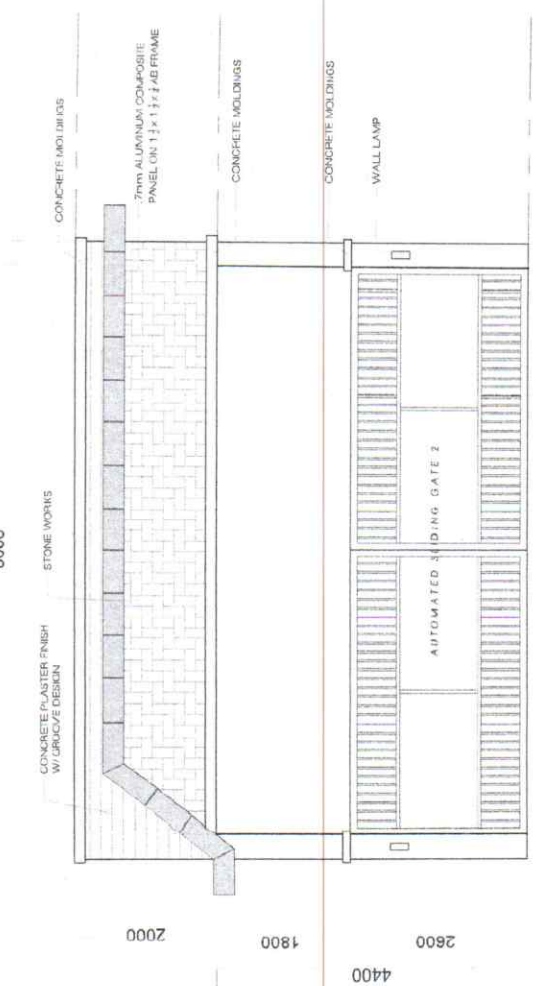
5 LEFT ELEVATION
SCALE 1:80M
A14



2 TOP VIEW
SCALE 1:50M
A14



3 FRONT ELEVATION
SCALE 1:80M
A14



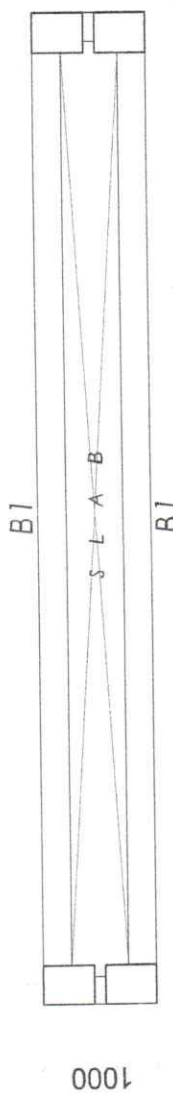
6 REAR ELEVATION
SCALE 1:80M
A14

<p>REPUBLIC OF THE PHILIPPINES DEPARTMENT OF AGRICULTURE REGIONAL FIELD UNIT NO. 5 SAN AGUSTIN, PILI, CAMARINES SUR</p>	<p>Prepared by:</p> <p>AR. JESUS CEZAR M. PEDIMONTE CAD & DESIGN</p>	<p>Checked by:</p> <p>ENGR. OMARTE SUIZ JR. Civil Engineer in-Charge</p>	<p>Reviewed by:</p> <p>GILBERT S. SALCEDO OFFICIAL & AUD</p>	<p>Recommending Approval:</p> <p>LUZ R. MARCELO R.T.D. for Approval</p>	<p>Approved by:</p> <p>RODEL P. JORNUELA, MARE Registered Professional Engineer</p>	<p>Name of Project:</p> <p>REPAIR AND IMPROVEMENT OF DA FENCE WITH GATE</p>	<p>CD by:</p> <p>AR. PEDS</p>
	<p>Location:</p> <p>DA FIELD OFFICE, SAN AGUSTIN, PILI, CAMARINES SUR</p>	<p>Source of Fund:</p> <p>NRRM</p>	<p>Sheet No.:</p> <p>A / 14</p>	<p>Date:</p>	<p>AS SHOWN</p>		

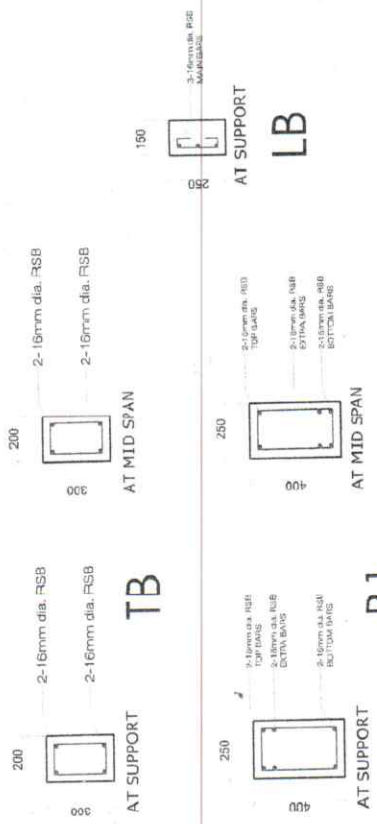
8350



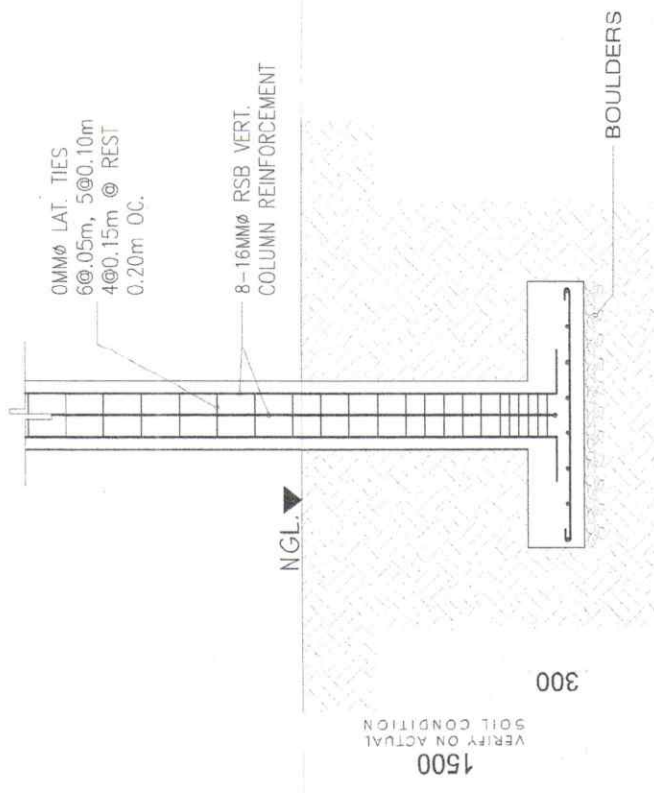
FOUNDATION PLAN
1:50M
SCALE



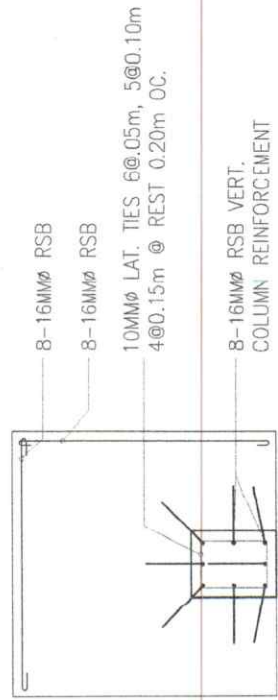
BEAM FRAMING PLAN
1:50M
SCALE



BEAM DETAIL
1:25M
SCALE



SECTION

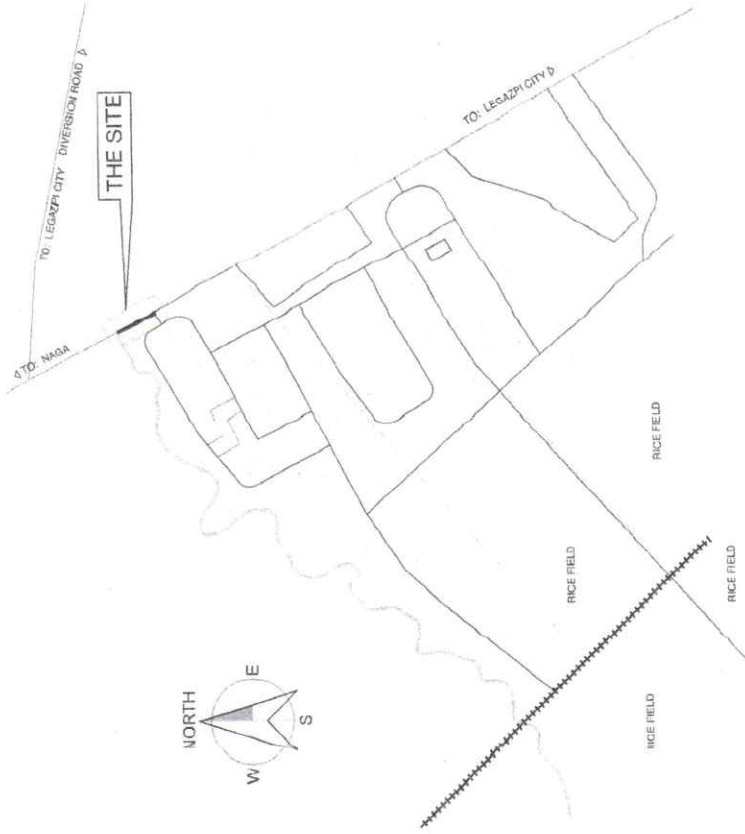


PLAN

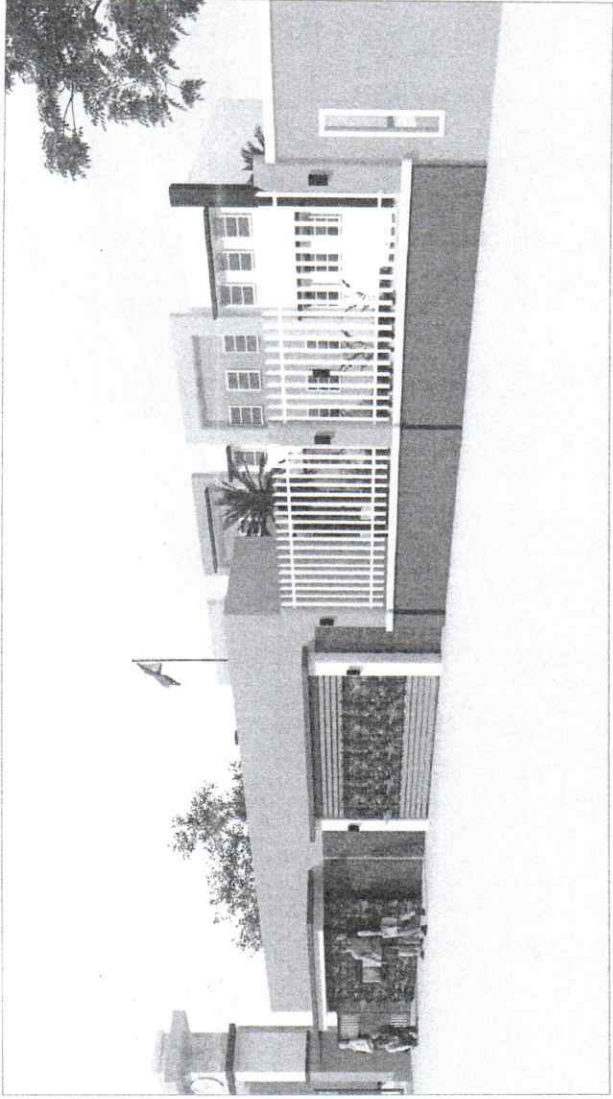
FOUNDATION DETAIL
1:30M
SCALE

	Prepared by:	 AR JULIUS CIZAR M. REDMONTE CIVIL ENGINEER IN CHARGE	Checked by:	 ENGR. OMAR REY RUIZ JR. CIVIL ENGINEER IN CHARGE	Reviewed by:	 GILBERT S. SALCEDO CIVIL ENGINEER	Recommending Approval:	 LUIZ R. MARCELIANO R.T.D. for Operations	Approved by:	 RODEL P. BERNIL Registered Professional Engineer	Name of Project:	REPAIR AND IMPROVEMENT OF DA FENCE WITH GATE	Drawn by:	AR, PHTS
	Location:	DA REG. COMPOUND, SAN AGUSTIN PILI, CAMARINES SUR	Source of Fund:	NDRIN	Sheet No.:	16								
Sheet Contents:											AS SHOWN			

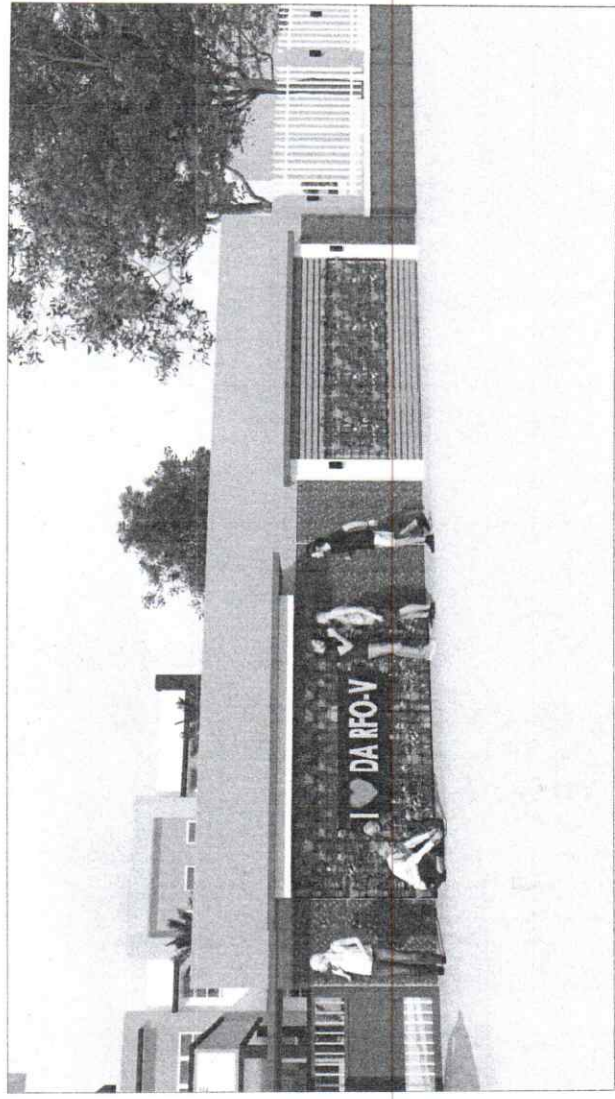
PHASE 4 OF FENCE



1 VICINITY MAP A1 SCALE NTS



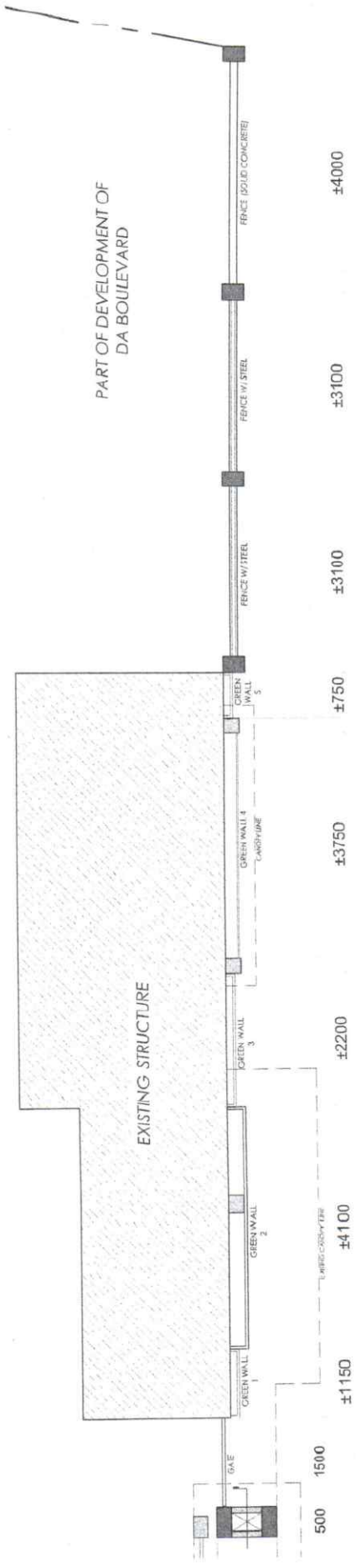
PERSPECTIVE VIEW 1



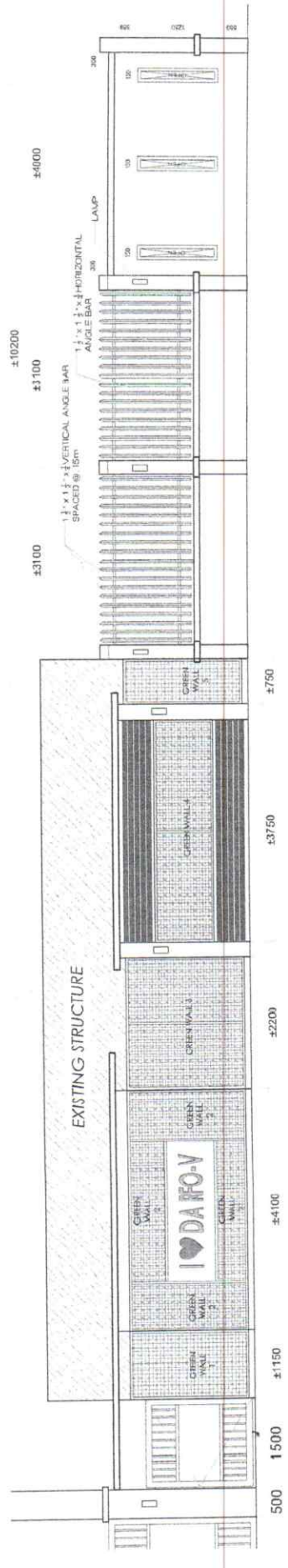
PERSPECTIVE VIEW 2

<p>REPUBLIC OF THE PHILIPPINES DEPARTMENT OF AGRICULTURE REGIONAL FIELD UNIT NO. 5 SAN AGUSTIN, PILI, CAMARINES SUR</p>	Prepared by:	Checked by:	Reviewed by:	Recommending Approval:	Approver:	Name of Project:	CAD No.: A.R. PIDS DATE: _____ Sheet No.: A 17
	AR. JULIUS CEZAR M. PIEDMONTE CAD I DESIGN	ENGR. ONO BENJAMIN JR. Chief Engineer & Chief	JERRY REBONA EDDS (RD)	GILBERT S. SALCEDO OC, Chief RAID	LUZ R. MARCELO R.T.D. (e) Operation	RODEL P. TORNILA, MBE Regional Director (e) Law	REPAIR AND IMPROVEMENT OF DA FENCE WITH GATE

PHASE 4 OF FENCE

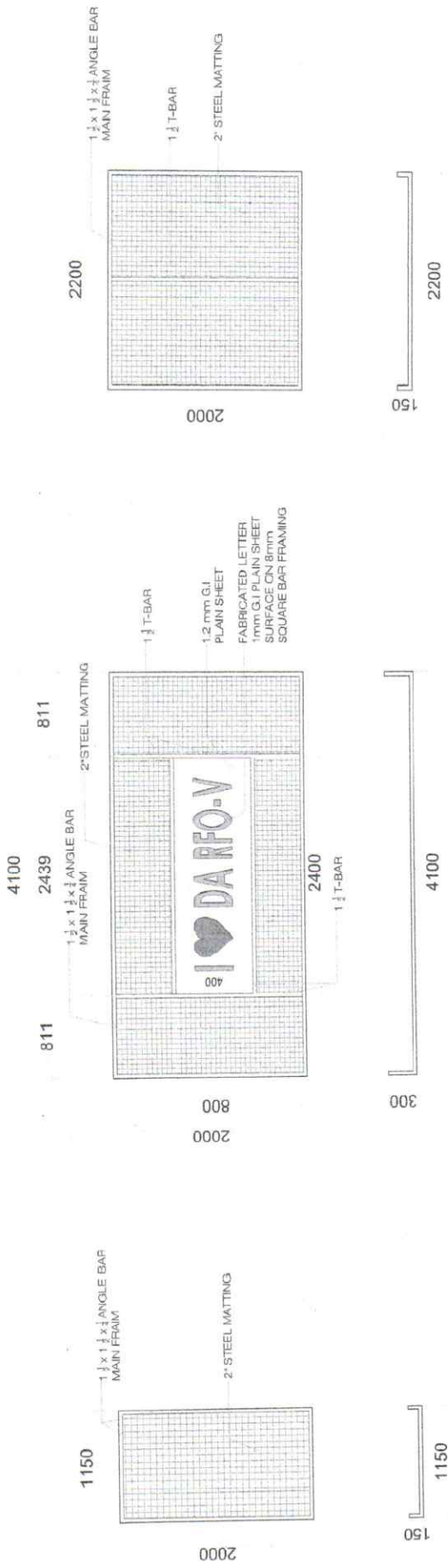


FLOOR PLAN
SCALE 1:80 M



ELEVATION
SCALE 1:80 M

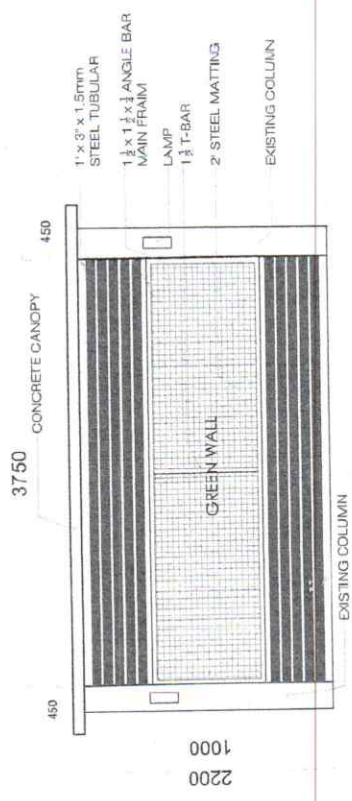
<p>REPUBLIC OF THE PHILIPPINES DEPARTMENT OF AGRICULTURE REGIONAL FIELD UNIT NO. 5 SAN AGUSTIN, PILI, CAMARINES SUR</p>	<p>Prepared by: A.R. JULIUS CEZAR M. PEDIMONTE LEADS DESIGN</p>	<p>Checked by: ENGR. ONOVINE NUZ JR. Civil Engineer in Charge</p>	<p>Reviewed by: JERUSA EBONA BDSNS</p>	<p>Recommending Approval: LUZ R. MARCELINO R.T.D. for Operation</p>	<p>Approved by: RODIELO P. MANILA, M.B.B.E. Regional Engineer in Charge</p>	<p>Name of Project: REPAIR AND IMPROVEMENT OF DA FENCE WITH GATE</p> <p>Location: DA BFCOY COMPOUND, SAN AGUSTIN, PILI, CAMARINES SUR</p> <p>Source of Fund: NDRRM</p> <p>Sheet Contents: AS SHOWN</p>	<p>Drawn by: A</p> <p>Scale: 1/8</p>
	<p>DATE</p>	<p>DATE</p>	<p>DATE</p>	<p>DATE</p>	<p>DATE</p>	<p>DATE</p>	



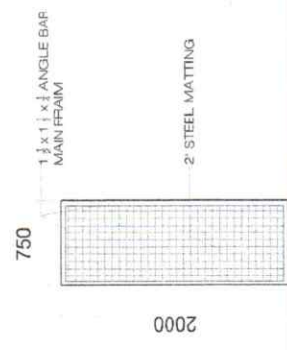
**GREEN WALL 1
FRAMING DET.**
1:50 M SCALE

**GREEN WALL 2
FRAMING DET.**
1:50 M SCALE

**GREEN WALL 3
FRAMING DET.**
1:50 M SCALE

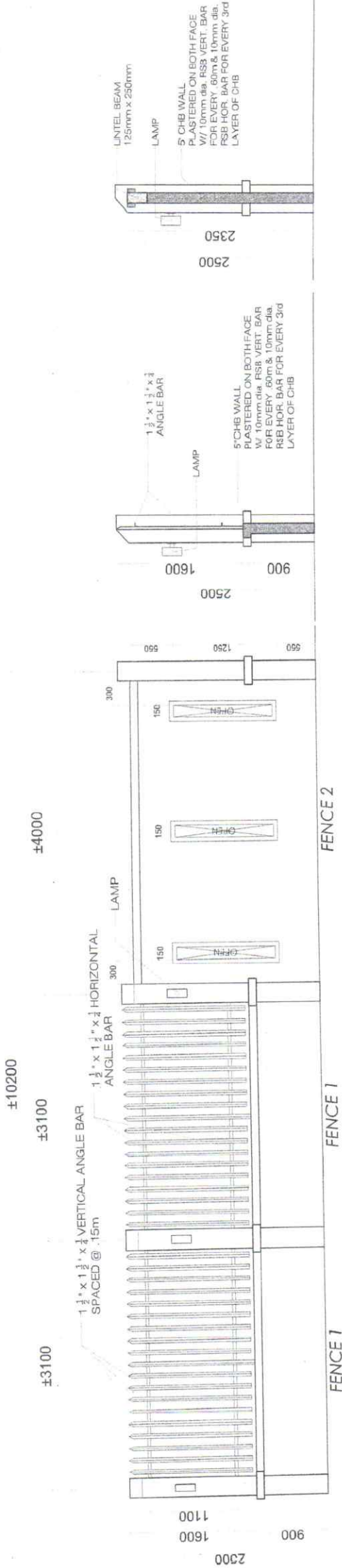


**GREEN WALL 4
FRAMING DET.**
1:50 M SCALE



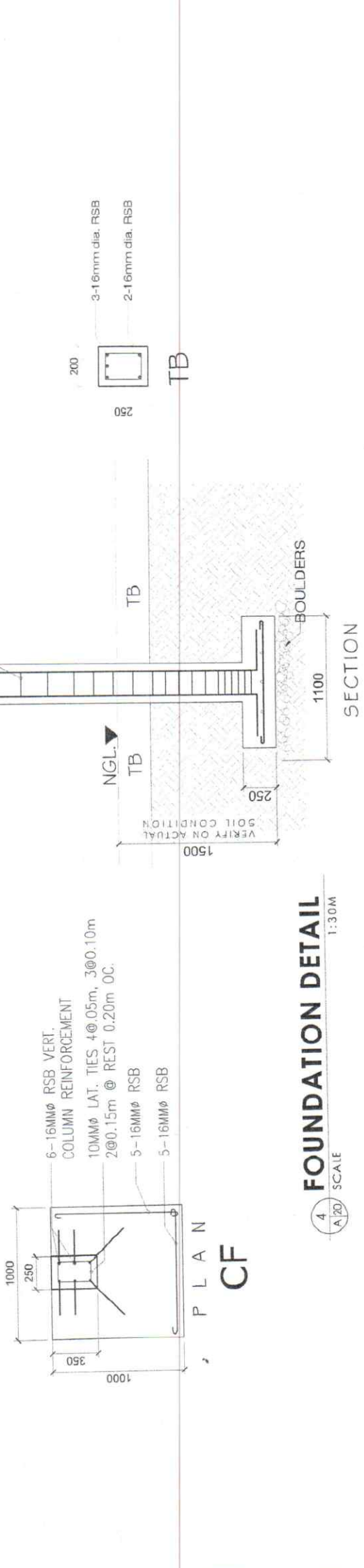
**GREEN WALL 5
FRAMING DET.**
1:50 M SCALE

<p>REPUBLIC OF THE PHILIPPINES DEPARTMENT OF AGRICULTURE REGIONAL FIELD UNIT NO. 5 SAN AGUSTIN, PILI, CAMARINES SUR</p>	<p>Prepared by: AR. JULIUS CEZAR M. PEDIMONTE C.A. DESIGNER</p>	<p>Checked by: ENGR. ONYPER RUIZ, JR. Civil Engineer in Charge</p>	<p>Reviewed by: ENGR. Y. A. EROÑA E.P. DESIGNER</p>	<p>Recommending Approval: LEZAR MARTELINO E.T.D. (not Operational)</p>	<p>Approved by: RODEL P. JOYANAL, MABE Regional Office Director</p>	<p>Name of Project: REPAIR AND IMPROVEMENT OF DA FENCE WITH GATE</p> <p>Location: DA RFO-V COMPOUND, SAN AGUSTIN, PILI, CAMARINES SUR</p> <p>Source of Fund: NDRR-F</p> <p>Sheet Contents: AS SHOWN</p>	<p>Drawn by: ALL FEELS</p> <p>DATE:</p> <p>Sheet No.: A 19</p>
	<p>1:50 M SCALE</p>						



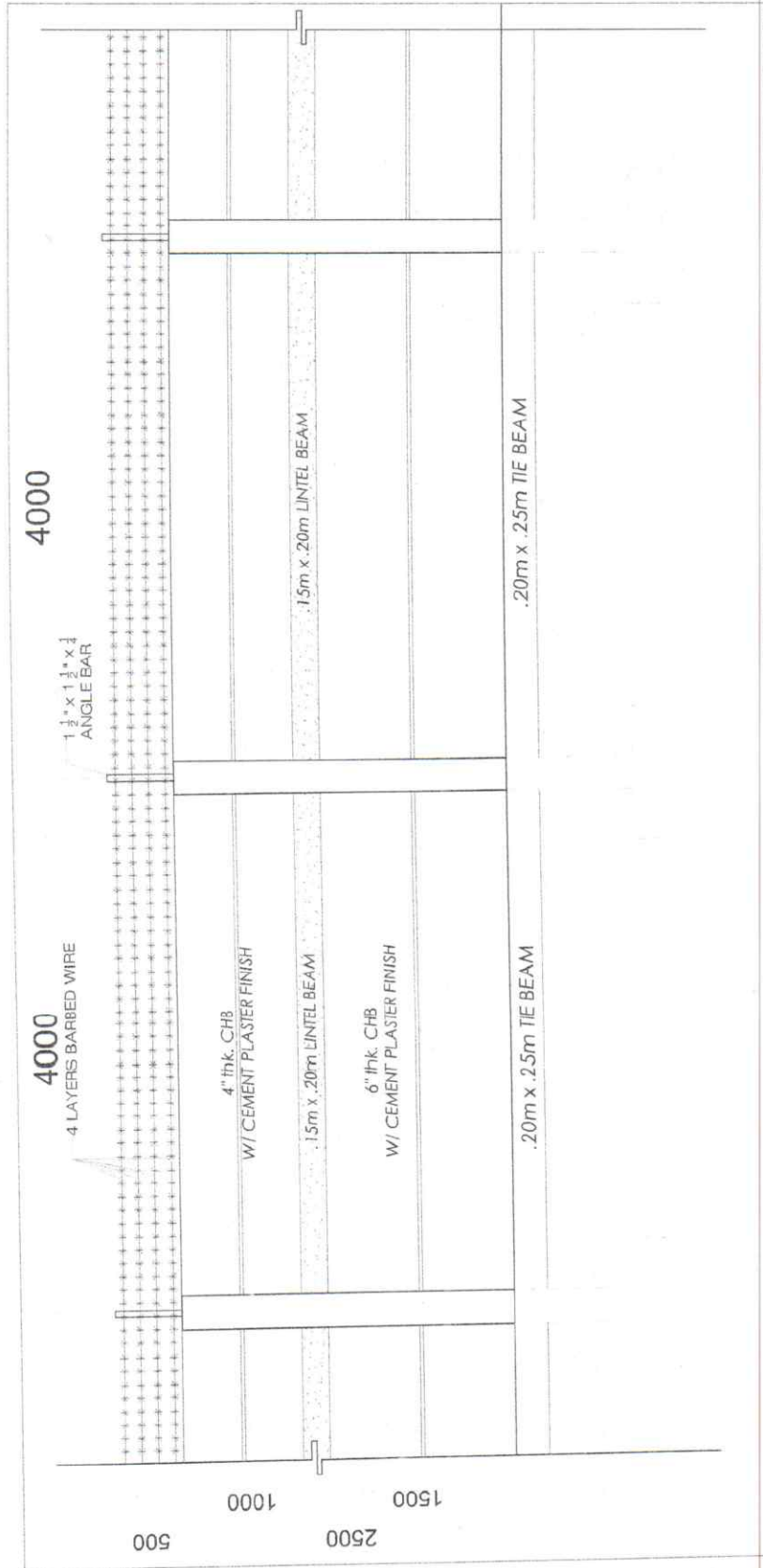
FENCE DETAIL
 SCALE 1:50M
 1
 2
 3

10MM Ø LAT. TIES
 4 @ 0.5m, 3 @ 0.10m
 2 @ 0.15m @ REST
 0.20m OC.

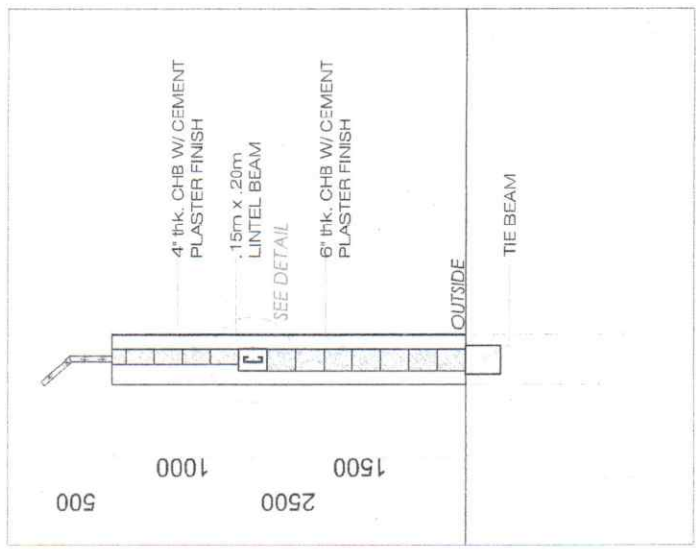


<p>REPUBLIC OF THE PHILIPPINES DEPARTMENT OF AGRICULTURE REGIONAL FIELD UNIT NO. 5 SAN AGUSTIN, PILI, CAMARINES SUR</p>	Prepared by: AR. JULIUS CEZAR M. PEDIMONTE C.E.P. & DESIGN	Checked by: ENGR. ONOFRE B. Z. JR. C.E.P. & DESIGN	Recommended Approval: LUIS R. MARCELO JR. RTD, for Operations	Approved by: RODRIGUEZ P. BERNILIA Regional Executive Officer	Name of Project: REPAIR AND IMPROVEMENT OF DA FENCE WITH GATE	Drawn by: A 20
	Date: _____	Location: DA REG. V. COMPOUND, S.M. AGUSTIN, PILI, CAMARINES SUR	SOURCE OF FUND: MORRM (Insert contents)	AS SHOWN	Date: _____	Drawn by: A 20

PHASE 5: ±455 LINEAR METER

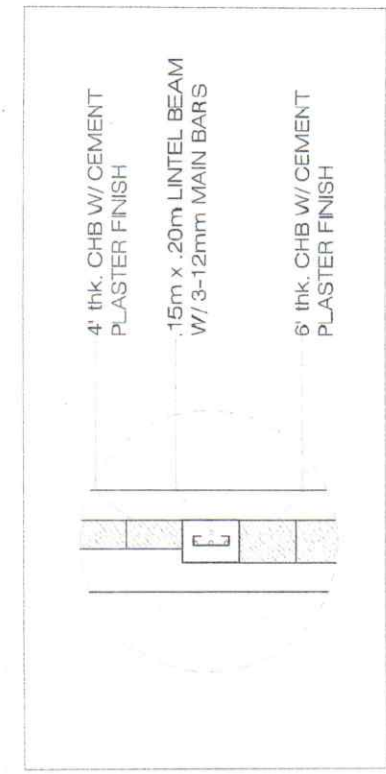


1 FENCE ELEVATION DETAIL
SCALE A 21 1:40M



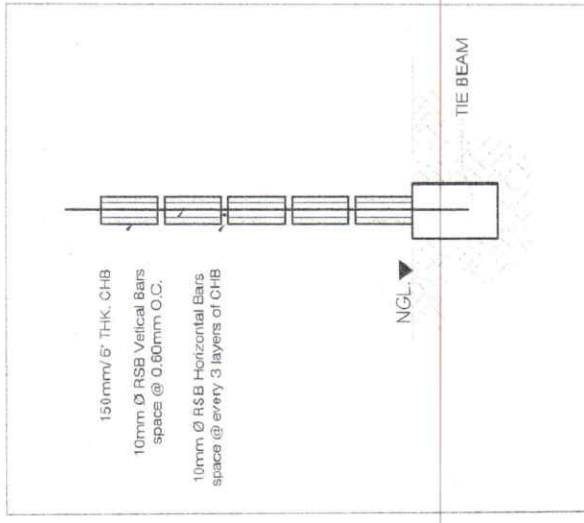
2 TYPICAL SIDE ELEVATION DET.
SCALE A 21 1:40M

<p>DEPARTMENT OF AGRICULTURE REGIONAL FIELD UNIT NO. 5 SAN AGUSTIN, PILI, CAMARINES SUR</p>	Prepared by:	Checked by:	Reviewed by:	Recommending Approval:	Approved by:	Name of Project: REPAIR AND IMPROVEMENT OF DA FENCE WITH GATE Location: DA REG. V. CAMPUS, SAN AGUSTIN, PILI, CAMARINES SUR SOURCE OF FUND: NDRR Sheet Contents: AS SHOWN
	A.R. VLADIS CEZAR M. MEDMONTE CAP & INSUR	ENGR. OLYMPE RUIZ JR. Civil Engineer in Charge	ENGR. GILBER P. SALCEDO OCCUPANT RATED	RTO, San Agustin LUZ R. MARCELIANO	Regional Executive RODOLFO T. MARINIL MABE	



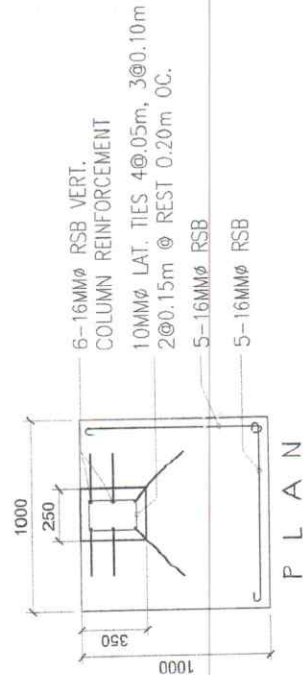
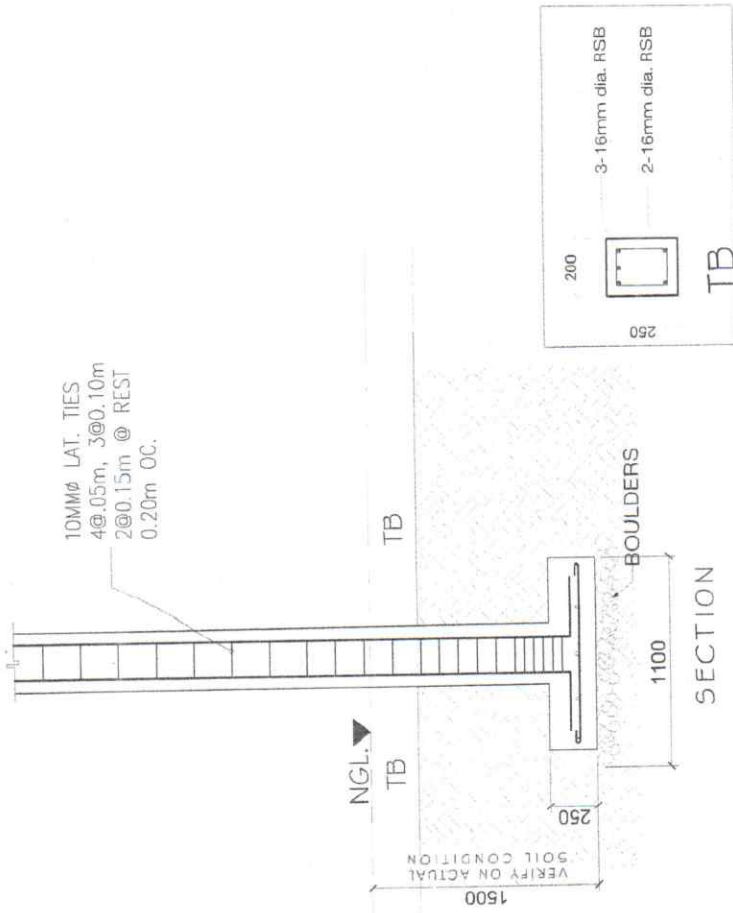
2 LINTEL BEAM DETAIL

SCALE 1:20M



3 WALL DETAIL

SCALE 1:20M



1 FOUNDATION DETAIL

SCALE 1:30M

<p>REPUBLIC OF THE PHILIPPINES DEPARTMENT OF AGRICULTURE REGIONAL FIELD UNIT NO.5 SIN AGUSTIN, PILI, CAMARINES SUR</p>	<p>Prepared by:</p> <p>AR. JULIUS CEZAR M. PADIMONTE LAD & DESIGN</p>	<p>Checked by:</p> <p>ENGR. OMBRE RUIZ JR. Civil Engineer in Charge</p>	<p>Reviewed by:</p> <p>GLBERT S. SALCEDO QC-Chief RAID</p>	<p>Recommending Approval:</p> <p>LUIZ R. MARCELO R.T.L. Inspector</p>	<p>Approved by:</p> <p>RODEL P. RAJIL A. RAJE Regional Engineer</p>	<p>Name of Project:</p> <p>REPAIR AND IMPROVEMENT OF DA FENCE WITH GATE</p>	<p>DDO by:</p> <p>AR. FEDES</p>
	<p>Location:</p> <p>DA FIELD COMPOUND, S.M. AGUSTIN, PILI, CAMARINES SUR</p>	<p>Source of Fund:</p> <p>NORRAT</p>	<p>Sheet Contents:</p> <p>AS SHOWN</p>	<p>Scale No:</p> <p>A 22</p>	<p>Date:</p>		