

REPUBLIC OF THE PHILIPPINES

DEPARTMENT OF AGRICULTURE

REGIONAL FIELD UNIT NO.5

SAN AGUSTIN, PILI, CAMARINES SUR

PROJECT TITLE

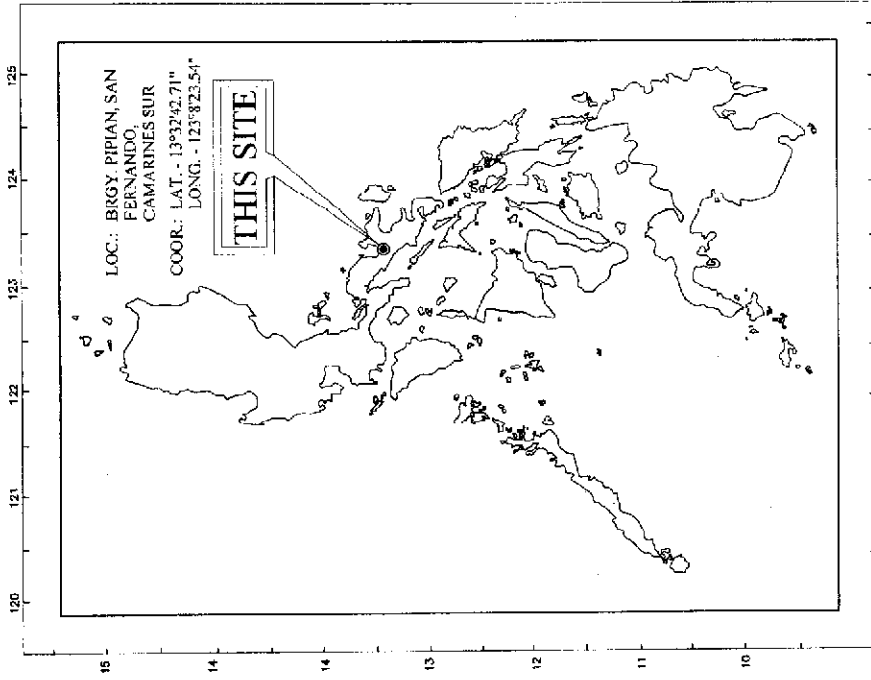
**CONSTRUCTION OF CANAL EXTENSION
OF TAGBANGAN DIVERSION DAM**

LOCATION: BRGY. PIPAN, SAN FERNANDO, CAMARINES SUR

PREPARED BY:

RAED OFFICE



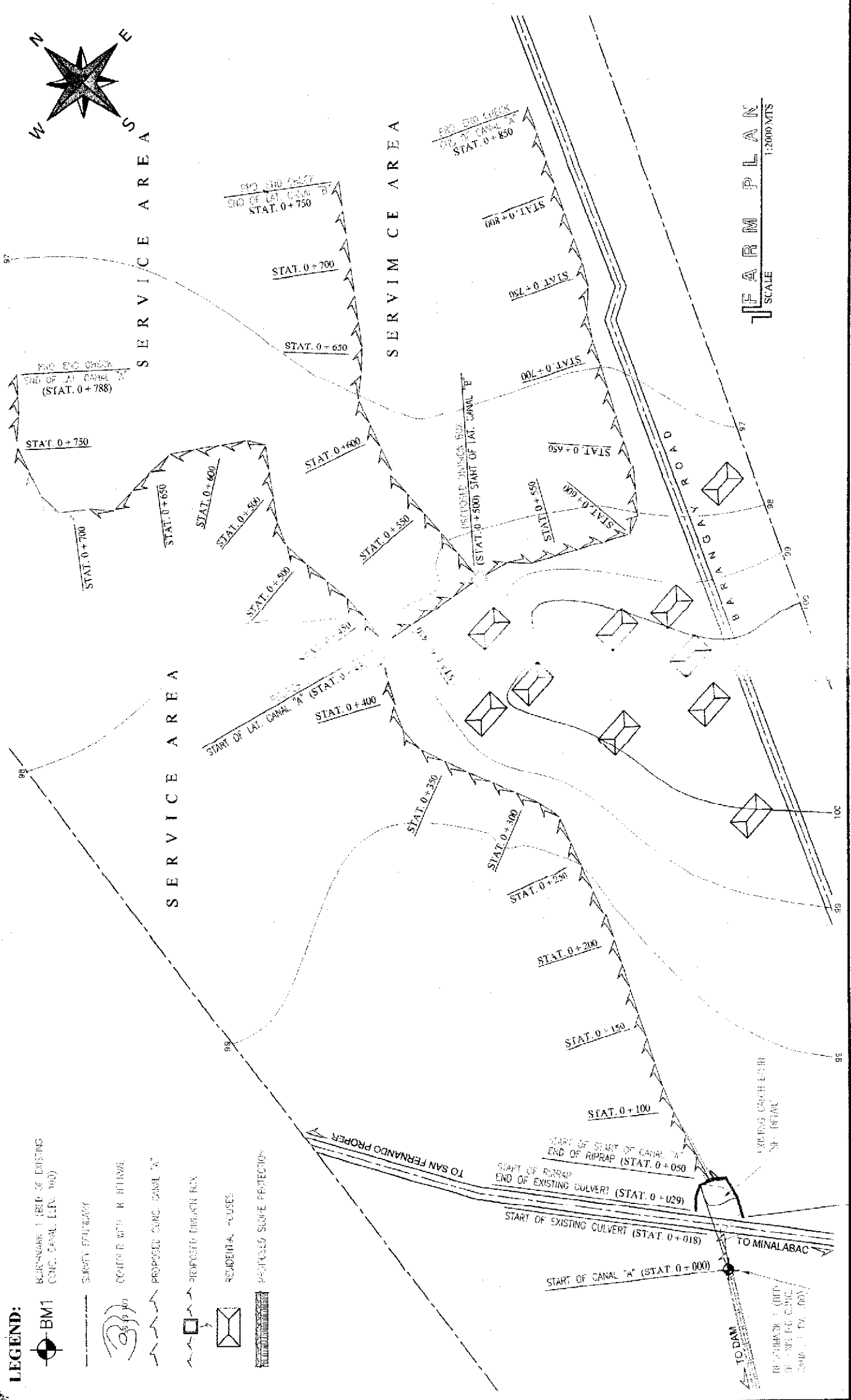


SHEET CONTENT :

	LOCATION MAP AND SHEET CONTENT
	FARM PLAN
	PROFILE ALONG CENTER OF CANAL EXTENSION
	TYPICAL CANAL "A" DETAIL, DIVISION BOX DET. CATCH BASIN SLOPE PROTECTION DETAIL
	TURN-OUT DETAIL, END CHECK DETAIL, TRACTOR CROSSING DET., LAT. CANAL "A" DET. AND LAT. CANAL "B" DET.
	BILLBOARD AND CONCRETE MARKER DETAIL

LOCATION MAP

REPUBLIC OF THE PHILIPPINES DEPARTMENT OF AGRICULTURE REGIONAL FIELD UNIT NO. 5 SAN AGUSTIN, Pili, CAMARINES SUR	Title of Project CONSTRUCTION OF CANAL EXTENSION OF TAGRANGIAN DD	Proposed by: ENGR. ARADO P. TAPIA Technical Staff	Checked by: ENGR. JERRY A. EDONA Engineer III, Regional Section Head	Reviewed by: ENGR. MILDA T. ALDANO Inspector I, Chief Road	Revising/Engineering Approval: ENGR. LUZ E. MARELINO RFB for Construction and Estimation	Approved by: RODIEL TOROMAN Regional Planning Director	DATED BY: DATE: 0001 SHEET NO.: 1/6
	Date of Field CONSTRUCTION OF CANAL EXTENSION OF TAGRANGIAN DD Location: BRGY. PIPIAN, San Fernando, Camarines Sur Land Source: Expropriation 2022 RICH PROGRAM (Tier 1) AS SHOWN	Licensee No. By: MR. E. AKTER B. MIRA Engineer III, Project Staff Head	Proposed by: ENGR. ARADO P. TAPIA Technical Staff	Checked by: ENGR. JERRY A. EDONA Engineer III, Regional Section Head	Reviewed by: ENGR. MILDA T. ALDANO Inspector I, Chief Road	Revising/Engineering Approval: ENGR. LUZ E. MARELINO RFB for Construction and Estimation	Approved by: RODIEL TOROMAN Regional Planning Director



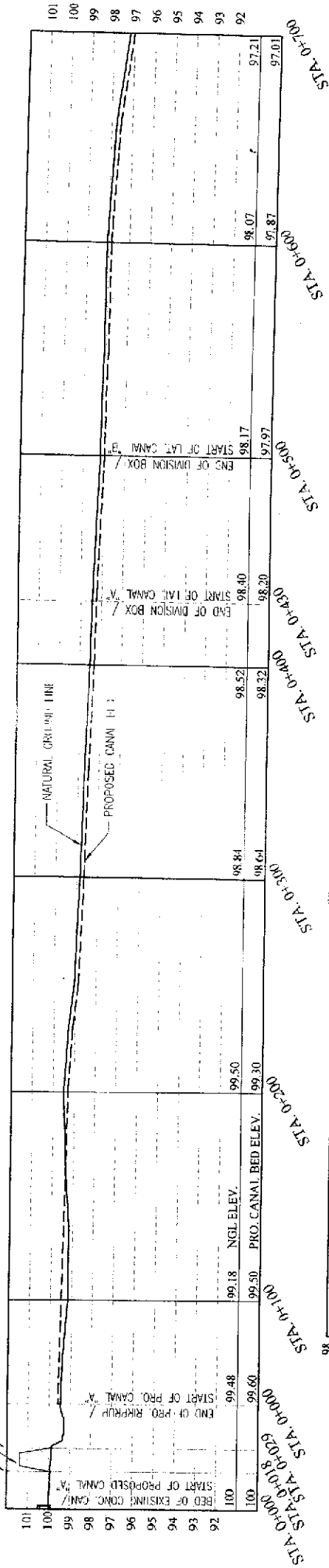
FARM PLAN
SCALE 1:2000 MTS

LEGEND:

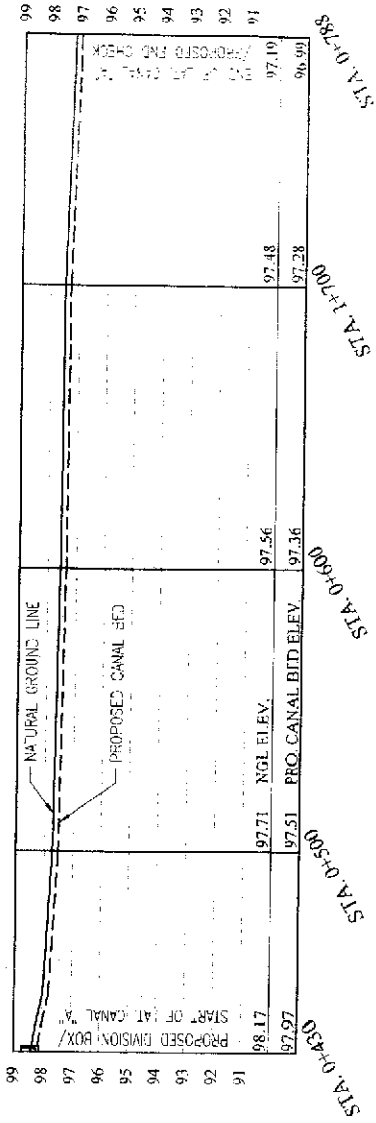
- BM1
- BENCHMARK (BED OF EXISTING CONC. CANAL, ELEV. 100)
- SURVEY BOUNDARY
- CONTOUR WITH 1M INTERVAL
- PROPOSED CONC. CANAL "A"
- PROPOSED DRAINAGE BOX
- RESIDENTIAL HOUSES
- POSTHOLE SORE PROTECTION

DEPARTMENT OF AGRICULTURE 1988	REGIONAL FIELD UNIT NO. 5 SAN AGUSTIN, PILI, CAMARINES SUR		CONSTRUCTION OF CANAL EXTENSION OF TAGBANGSAN DD		AS SHOWN
	PROJECT: By Mr. Pipah, San Remundao, Camarines Sur		SHEET NO. 2/6		
PREPARED BY: ENGR. JOSEY T. JARA Technical Staff	CHECKED BY: ENGR. JERRY A. BEROSA Inspector in Charge, San Remundao	SUBMITTED BY: ENGR. JERRY A. BEROSA Inspector in Charge, San Remundao	RECOMMENDING OFFICER: LUT. E. MARCELINO RTO for Operations and Logistics	APPROVED BY: RODEL P. MORNIA Inspector in Charge	DATE: 2021 SHEET NO. 2/6

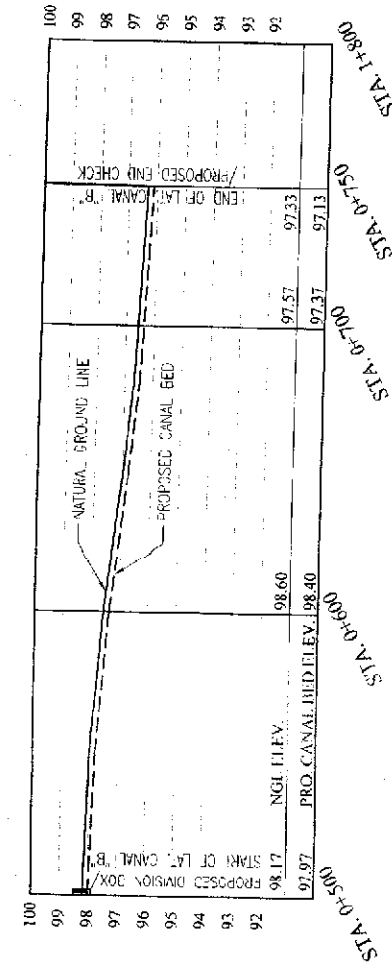
START OF EXISTING CULVERT
TOP OF MUNICIPAL ROAD
END OF EXISTING CULVERT/START OF RIPRAP



PROFILE ALONG CENTER OF EXTENSION CANAL "A"
SCALE
V=1:200, H=1:2000 MTS



PROFILE ALONG CENTER OF LAT. CANAL "A"
SCALE
V=1:200, H=1:2000 MTS



PROFILE ALONG CENTER OF LAT. CANAL "B"
SCALE
V=1:200, H=1:2000 MTS

REPUBLIC OF THE PHILIPPINES
DEPARTMENT OF AGRICULTURE
REGIONAL FIELD UNIT NO. 5
SAN AGUSTIN, PILI, CAVARILES SUR

2022 RICE PROGRAM (Tier 1) | ASSHOWN

Name of Project: CONSTRUCTION OF CANAL EXTENSION OF TABANGANAN DD

Location: Brgy. Pijuan, San Fernando, Camarines Sur

Engineer: [Signature] | Sheet Count: []

Prepared by: [Signature] | ENGR. ANTONIO TABIA

Checked by: [Signature] | ENGR. ARTURO MIRA

Reviewed by: [Signature] | ENGR. JESSE A. LIBINA

Submitted by: [Signature] | ENGR. NADIA ALBAKO

Approved by: [Signature] | ENGR. JESSE A. LIBINA

Agency: [Signature] | ENGR. JESSE A. LIBINA

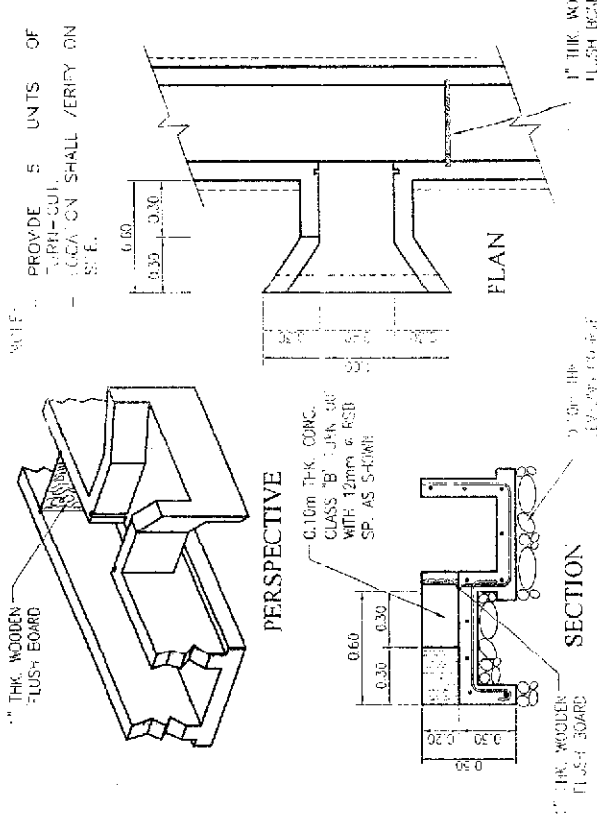
EGISE Chapter: []

DATE: []

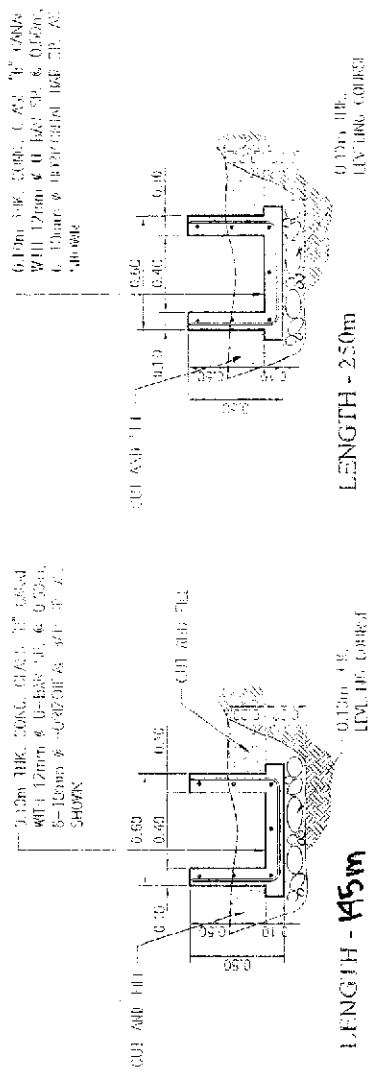
Page No.: []

Scale: []

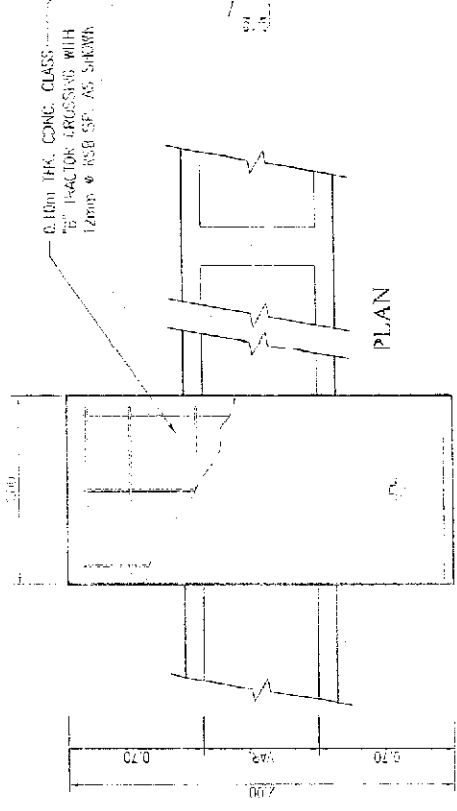
3/6



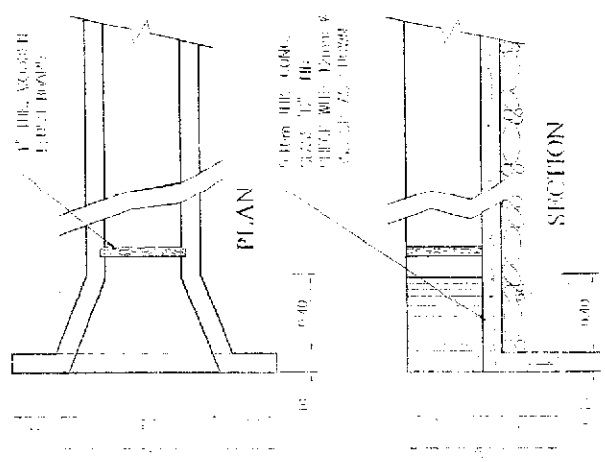
TYPICAL DETAIL OF TIE-OUT
SCALE 1:30 METS



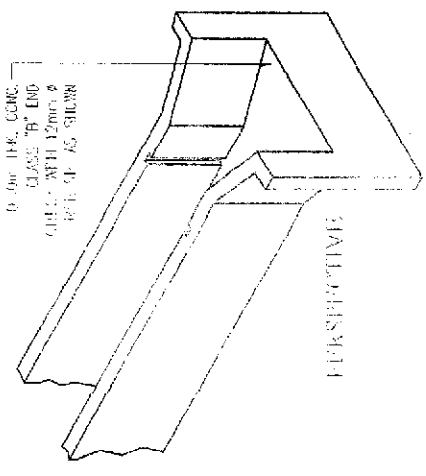
TYPICAL DETAIL OF TIE-OUT
SCALE 1:30 METS



TYPICAL TRACTION CROSSING DETAIL
SCALE 1:30 METS



TYPICAL END CHECK DETAIL
SCALE 1:30 METS



PROVIDE 5 UNITS OF TAPPI-CUI SHALL VERIFY ON SITE.

PROVIDE 5 UNITS OF TAPPI-CUI SHALL VERIFY ON SITE.

<p>DEPARTMENT OF AGRICULTURE REPUBLIC OF THE PHILIPPINES REGIONAL FIELD UNIT - P.O. SAN AGUSTIN, PILI CAMARINES SUR.</p>	<p>Checked by: _____</p> <p>Designed by: _____</p> <p>Drawn by: _____</p> <p>Scale: _____</p>	<p>Prepared by: _____</p> <p>Checked by: _____</p> <p>Reviewed by: _____</p> <p>Scale: _____</p>	<p>Submitted by: _____</p> <p>Checked by: _____</p> <p>Reviewed by: _____</p> <p>Scale: _____</p>	<p>Approved by: _____</p> <p>Checked by: _____</p> <p>Reviewed by: _____</p> <p>Scale: _____</p>	<p>DATE: _____</p> <p>PROJECT NO.: _____</p> <p>5/6</p>
	<p>Checked by: _____</p> <p>Designed by: _____</p> <p>Drawn by: _____</p> <p>Scale: _____</p>	<p>Prepared by: _____</p> <p>Checked by: _____</p> <p>Reviewed by: _____</p> <p>Scale: _____</p>	<p>Submitted by: _____</p> <p>Checked by: _____</p> <p>Reviewed by: _____</p> <p>Scale: _____</p>	<p>Approved by: _____</p> <p>Checked by: _____</p> <p>Reviewed by: _____</p> <p>Scale: _____</p>	<p>DATE: _____</p> <p>PROJECT NO.: _____</p> <p>5/6</p>

