



REPUBLIC OF THE PHILIPPINES
DEPARTMENT OF AGRICULTURE
REGIONAL FIELD UNIT NO.5
SAN AGUSTIN, P.I.I., CAMARINES SUR.

PROJECT TITLE:

**CONSTRUCTION OF SAN JUAN DAAN
DIVERSION DAM**
LOCATION: BRGY. SAN JUAN DAAN, BULAN, SORSOGON

PREPARED BY:
RAED OFFICE



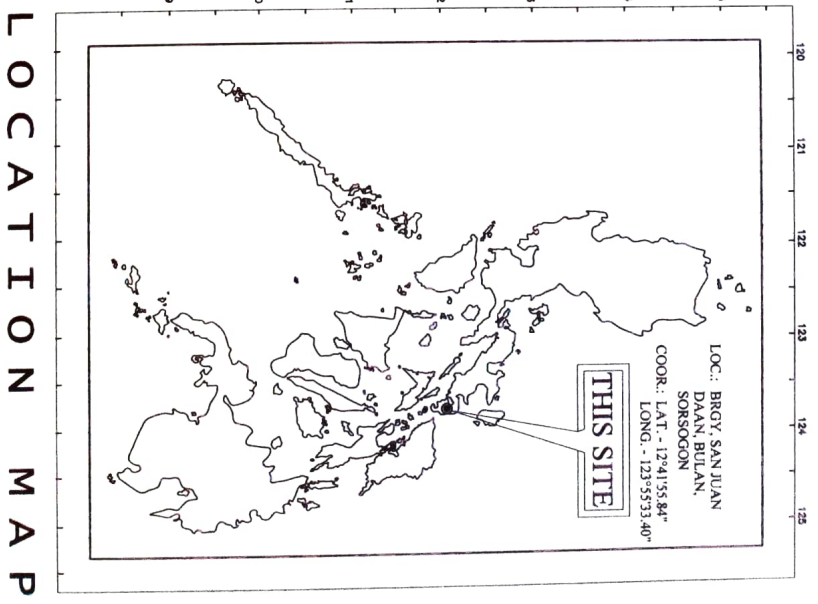
SHEET CONTENT

1A/110	LOCATION MAP, SHEET CONTENT, PROJECT FEATURES
2A/110	FARM PLAN
3A/110	SITE DEVELOPMENT PLAN, SLOPE PROTECTION DETAIL
4A/110	GENERAL PLAN, SECTION THRU "C", SECTION THRU "D"
5A/110	SECTION THRU "AA", SECTION THRU "B", RETAINING WALL DETAIL
6A/110	DAM DETAIL
7A/110	PROFILE ALONG CENTER OF MAIN CANAL, DIVISION BOX DETAIL
8A/110	CANAL STRUCTURES DETAILS
9A/110	FABRICATED STEEL GATE DETAIL
10A/110	PROJECT BILLBOARD DETAIL, CONCRETE MARKER DETAIL

MAIN PROJECT FEATURES

Name of Project : CONSTRUCTION OF SAN JUAN DAAN DIVERSION DAM
 Location: Brgy. San Juan Daan, Buljan, Sorsogon
 Coordinates: : LAT. 12°41'55.84"
 LONG. 123°55'33.40"

1. WATERSHED		b. OUTLET WORKS	
Area(Ha.)	-	Type	STEEL GATE
Present Land-use	Clay loam	STEEL GATE WITH ANGLE BAR FRAMING	4 UNITS
SOil TYPE		Maximum Discharge(D/s)	-
2. HYDROLOGY		c. IRRIGATION WORKS	
Gauge Reference River	-	c1. Canal length(m)	1600 m
Coordinates	-	c2. Structures	1 unit
Gauge River Area(sq. km)	-	Division box	6 units
Design Flood @ Gauge River(Q yr.cms)	-	Tractor Crossing	5 units
Design Flood @ Diversion Point(Q yr.cms)	-	Turn-out	-
3. PROJECT FACILITIES		d. ACCESS ROAD	
a. DAM		Type	Municipal Road
Type	PIER TYPE	Length(m)	10 km
Crest Elev.(m)	101.60	4. DESIGN SERVICE AREA AND CROPPING PATTERN	
Height(m)	1.60	Cropping Pattern	RICE-RICE-FOLLOW
Length(m)	7.00	Seasonal System water Requirements(mm)	-
Upstream Apron Elev./Length(m)	100.00 / 3.20	Service Area(HA)	60
Downstream Apron Elev./Length(m)	100.00 / 4.05	Project Cost(P)	-



REPUBLIC OF THE PHILIPPINES
 DEPARTMENT OF AGRICULTURE
 REGIONAL FIELD UNIT NO. 5
 SAN JOSE, PULI, CAMARINES SUR

Name of Project:	CONSTRUCTION OF SAN JUAN DAAN DIVERSION DAM	Prepared by:	ENGR. ARAY P. TAJARA Technical Staff	Checked by:	ENGR. MARTIN B. MIRA Engineer III, EROSO Unit Head	Reviewed by:	ENGR. JERRY A. EBOSA Engineer III, EROSO Section Head	Submitted by:	ENGR. NILDAL ALBANO Engineer III, Civil Road	Recommending Approver:	LIZ R. MARCELINO RTP for Operations and Expenses	Approved by:	RODEL P. TORRALBA Regional Engineer in Charge	DATE:	1/10
Fund Source:	2022 RICE PROGRAM (Tr 1)	Sheet Count:	AS SHOWN												

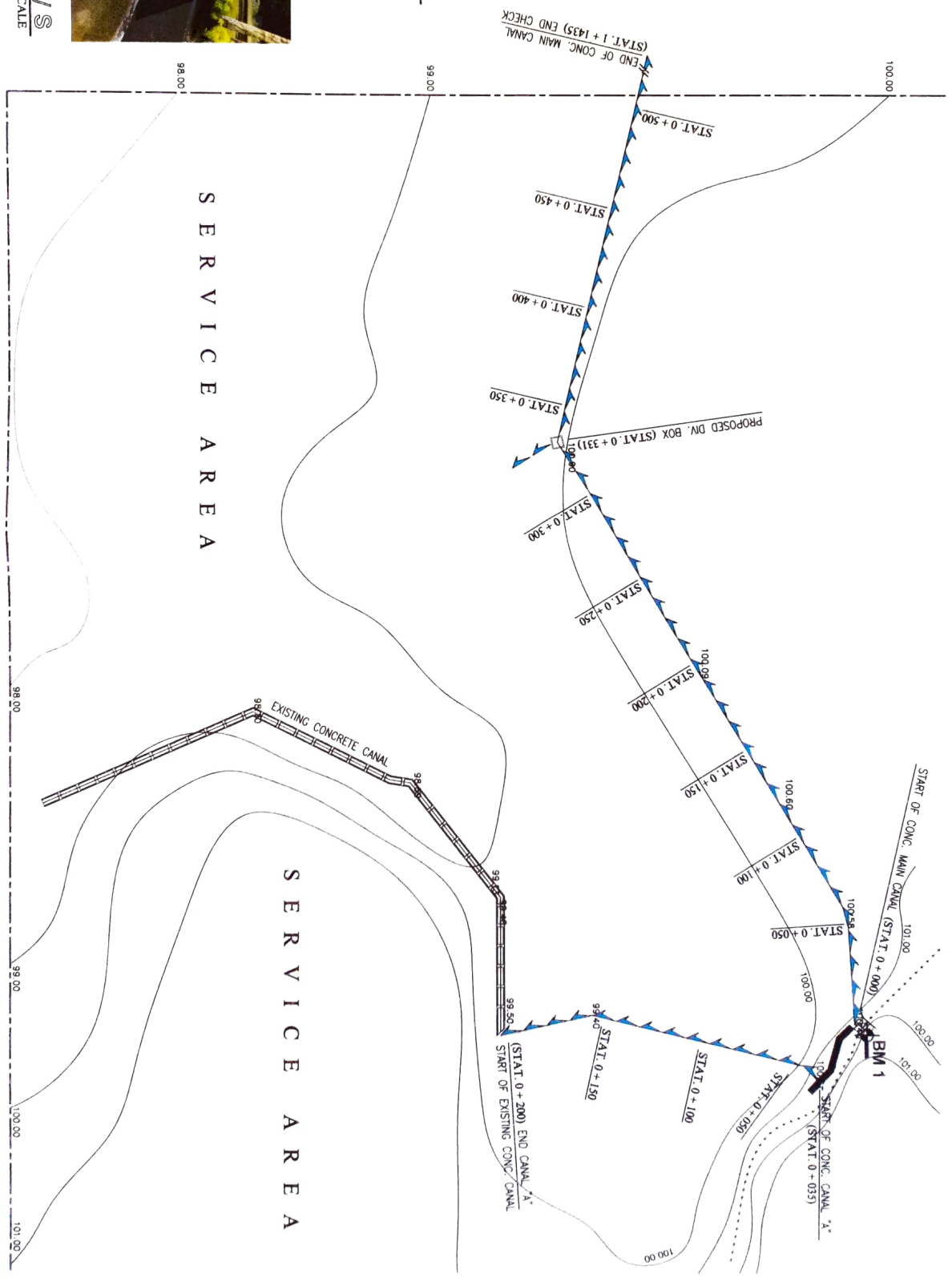
LEGEND:

- BM1** BENCHMARK 1 (FOOT OF GEMILINA TREE, ELEV. 100)
- PROPOSED PIER TYPE CONCRETE DAM
- SURVEY BOUNDARY
- CONTOUR WITH 1M INTERVAL
- PROPOSED CONC. CANAL
- PROPOSED DIVISION BOX
- EXISTING CONC. CANAL
- SLOPE PROTECTION



FARM PLAN
SCALE 1:2000 MTS

PERSPECTIVE U/S
NOT TO SCALE



<p>DEPARTMENT OF AGRICULTURE 1898</p>	<p>REPUBLIC OF THE PHILIPPINES DEPARTMENT OF AGRICULTURE REGIONAL FIELD UNIT NO. 5 SAN AGUSTIN, PULI, CAMARINES SUR</p>		<p>NAME OF PROJECT: CONSTRUCTION OF SAN JUAN DAAN DIVERSION DAM</p>		<p>PROPOSED BY: ENGR. ARSLAN P. TAPIA Technical Staff</p>		<p>CHANGED BY: ENGR. ARTHUR B. MIRA Engineer II (Professional Head)</p>		<p>REVIEWED BY: ENGR. JERRY A. EBONA Engineer II (Professional Head)</p>		<p>SUBMITTED BY: ENGR. NIYA SALASANO Engineer I (Chief Field)</p>		<p>RECOMMENDING APPROVAL: LIZA R. MARCELINO RTR for Operation and Extension</p>		<p>APPROVED BY: RODEL P. MILLA-MARE Regional Director</p>		<p>DATE: 2/10</p>
	<p>LOCATION: Brgy. San Juan Daan, Buluan, Sorsogon</p>			<p>TITLE SHEET: 2022 RICE PROGRAM (Tier 1)</p>			<p>SHEET NO.: AS SHOWN</p>			<p>DATE: 2/10</p>							



REPUBLIC OF THE PHILIPPINES
 DEPARTMENT OF AGRICULTURE
 REGIONAL FIELD UNIT NO. 5
 SAN AGUSTIN, PUL. CAMARINES SUR

Name of Project:		CONSTRUCTION OF SAN JUAN DAAN DIVERSION DAM	
Location:	Brgy. San Juan Daan, Bulan, Sorsogon		
Field Source:	Drawn by:	Checked by:	Reviewed by:
2023 RICE PROGRAM (Tier 1)	AS SHOWN		

Prepared by:
 ENGR. ARRY P. TAPIA
 Technical Staff

Checked by:
 ENGR. ARTHUR B. MIRA
 Engineer II, PEISS (Civil Head)

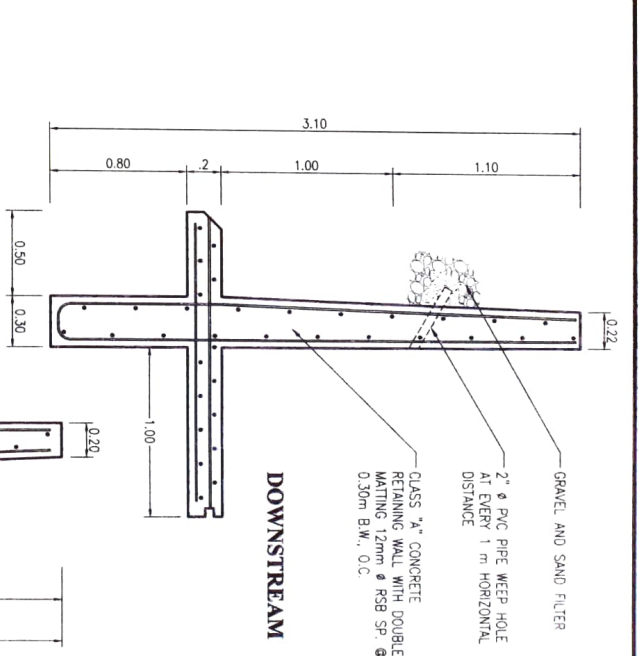
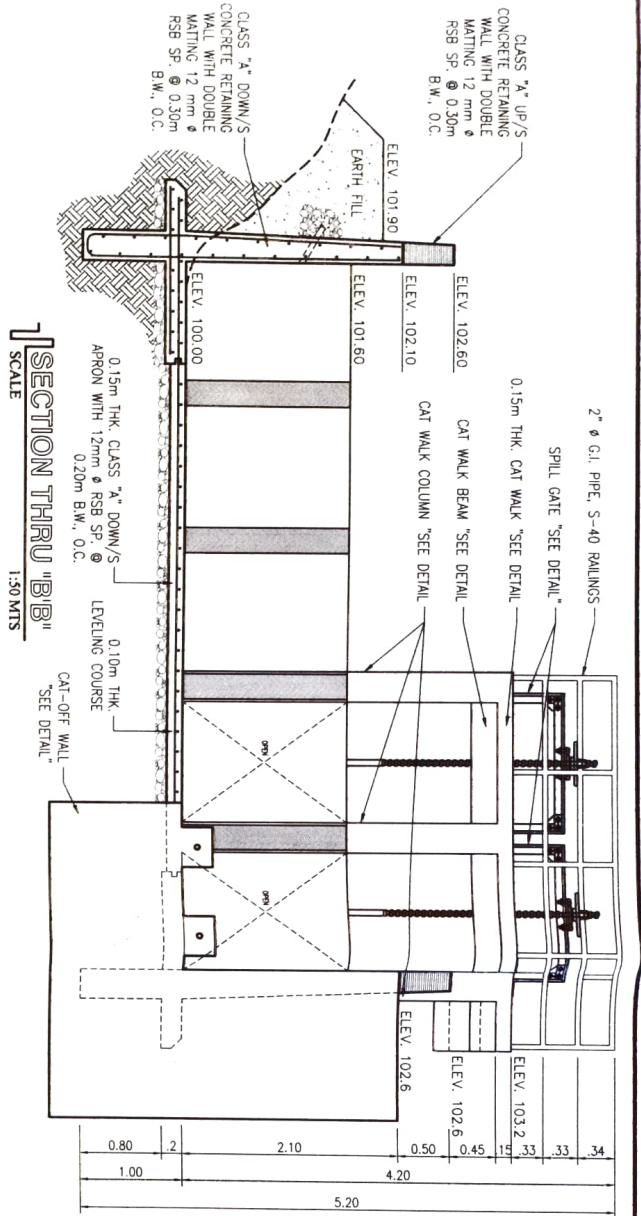
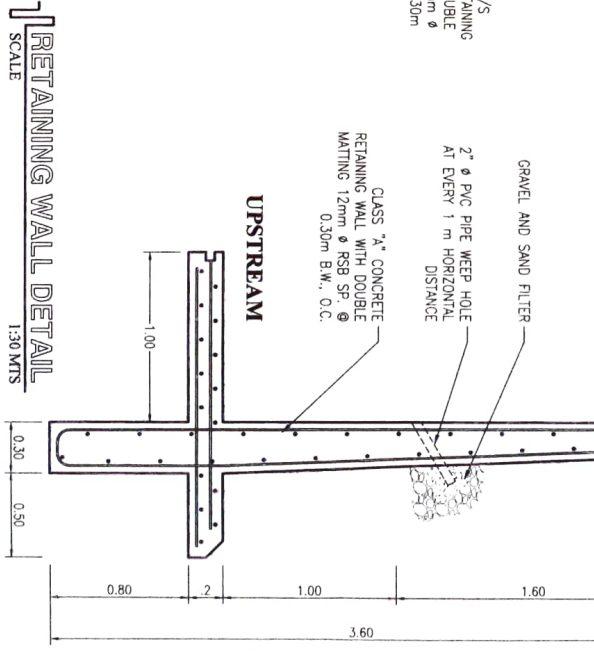
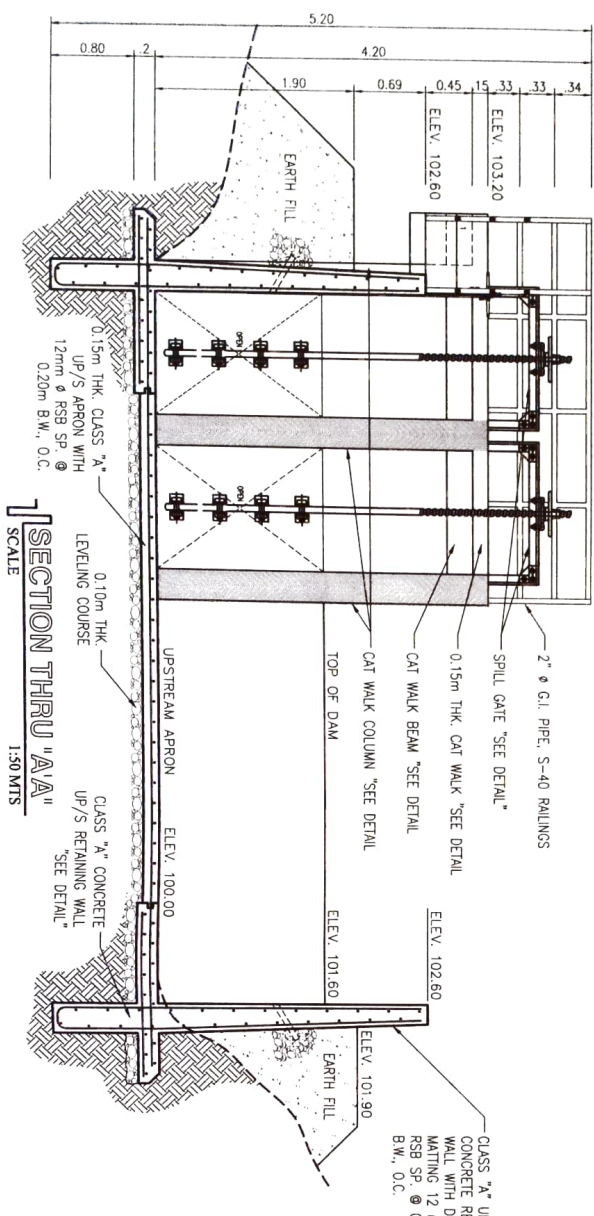
Reviewed by:
 ENGR. JERRY A. EBONA
 Engineer III, PEISS (Section Head)

Submitted by:
 ENGR. NINA ALBANO
 Engineer V, Chief Field

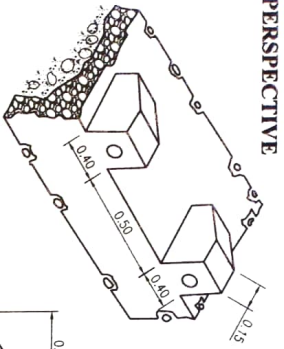
Recommending Approval:
 LIZ R. MARCELINO
 ETD for Operation and Estimation

Approved by:
 RODEL P. JOSENA, MABE
 Regional Director

DATE	APPROVAL
2023	
5	10

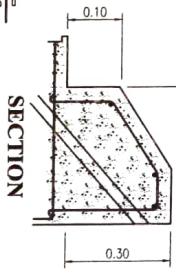


PERSPECTIVE



CLASS "A" CONCRETE CHUTE BLOCK WITH 12mm ϕ RSB SP. AS SHOWN

TEND SILL DETAIL
SCALE 1:30 MTS

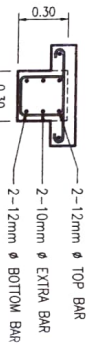


0.25m THK. CLASS "A" CONCRETE DAM WITH DOUBLE MATTING 12mm ϕ RSB SP. @ 0.20m B.W., O.C.



PLAN

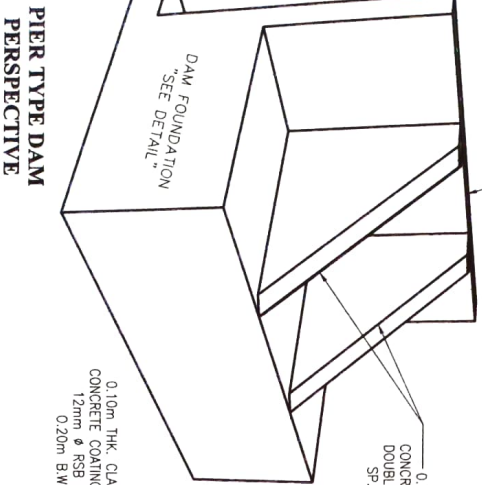
SECTION



TYPICAL BEAM DETAIL
SCALE 1:30 MTS

0.25m THK. CLASS "A" CONCRETE DAM WITH DOUBLE MATTING 12mm ϕ RSB SP. @ 0.20m B.W., O.C.

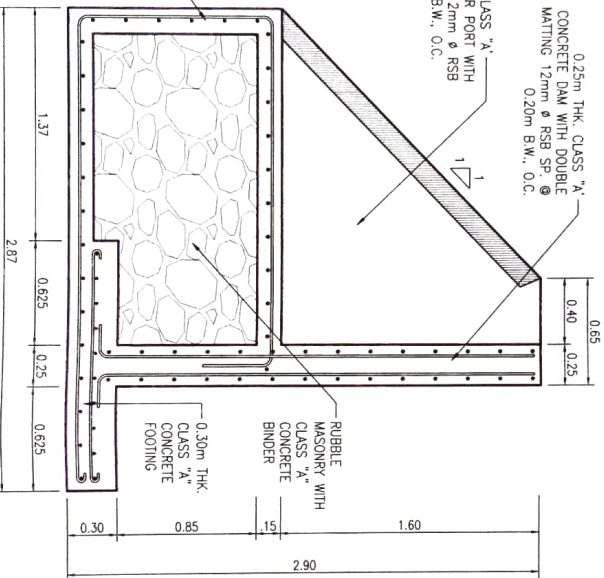
0.25m THK. CLASS "A" CONCRETE COUNTER PORT WITH DOUBLE MATTING 12mm ϕ RSB SP. @ 0.20m B.W., O.C.



PIER TYPE DAM PERSPECTIVE

0.10m THK. CLASS "A" CONCRETE COATING WITH 12mm ϕ RSB SP. @ 0.20m B.W., O.C.

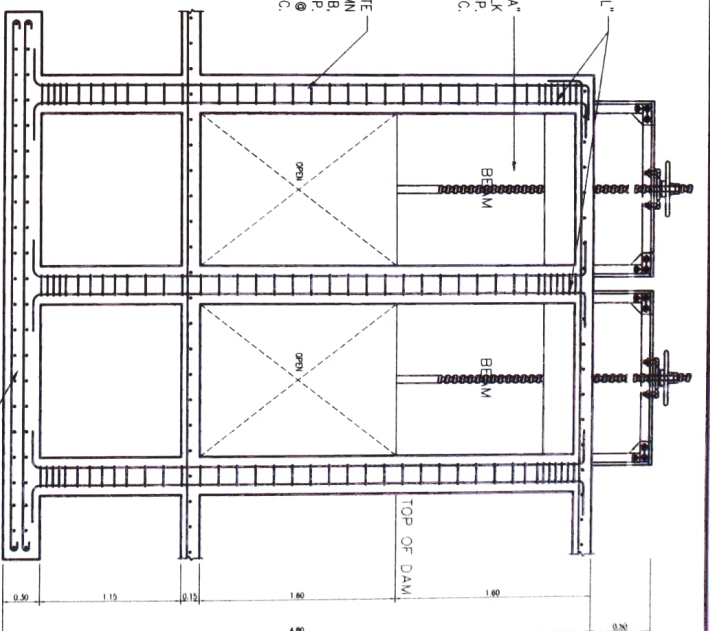
DAM DETAIL
SCALE 1:30 MTS



SECTION

0.15m THK. CLASS "A" CONCRETE CAT WALK WITH 12mm ϕ RSB SP. @ 0.20m B.W., O.C.

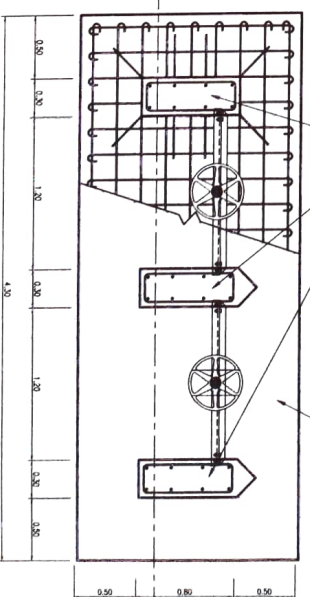
CLASS "A" CONCRETE SPILL GATE COLUMN WITH 8-16mm ϕ RSB, 10mm ϕ STIRRUPS SP. 3-0.05m, 3-0.05m, 3-0.10m, ϕ REST 0.15m B.W., O.C.



SECTION

CLASS "A" CONCRETE SPILL GATE COLUMN WITH 8-16mm ϕ RSB, 10mm ϕ STIRRUPS SP. 3-0.05m, 3-0.10m, ϕ REST 0.15m B.W., O.C.

0.40m THK. CLASS "A" CONCRETE FOOTING WITH 16-16mm ϕ RSB SP. AS SHOWN



PLAN

FOOTING AND COLUMN DETAIL @ SPILL GATE
SCALE 1:30 MTS



REPUBLIC OF THE PHILIPPINES
DEPARTMENT OF AGRICULTURE
REGIONAL FIELD UNIT NO. 5
SAN AGUSTIN, PULI, CAMARINES SUR

Name of Project	CONSTRUCTION OF SAN JUAN DAAN DIVERSION DAM
Location	Brgy. San Juan Daan, Bulao, Sorsogon
Fund Source	2022 RICE PROGRAM (TR 1)
Drawn	AS SHOWN

Prepared by:
ENR. ARILYN T. YAPIA
Licensed Staff

Checked by:
ENR. ARILYN T. YAPIA
Licensed Staff

Reviewed by:
ENR. JERRY A. ENOKA
Engineer in Charge

Submitted by:
ENR. JERRY A. ENOKA
Engineer in Charge

Supervising Approval:
LIZ R. MARCELENO
RTD for Supervisor and Foreman

Approved by:
RODEL E. ZARULLA MABE
Regional Engineer



REPUBLIC OF THE PHILIPPINES
 DEPARTMENT OF AGRICULTURE
 REGIONAL FIELD UNIT NO. 5
 SAN AGUSTIN, PULI, CAGAIANES SUR

Name of Project:	CONSTRUCTION OF SAN JUAN DAAN DIVERSION DAM		
Location:	Brgy. San Juan Daan, Balaan, Sorsogon		
Fund Source:	2022 RICE PROGRAM (TR 1)	AS SHOWN	

Prepared by:
 ENGR. ARAY P. TAPIA
 Technical Staff

Checked by:
 ENGR. WALTER B. MITA
 Engineer II, EROSS Section Head

Reviewed by:
 ENGR. JERRY A. EBONA
 Engineer III, EROSS Section Head

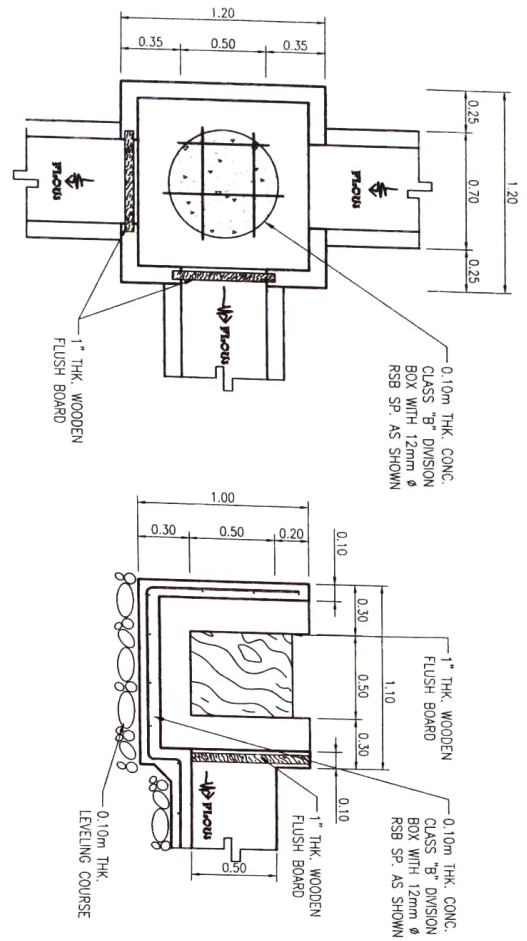
Submitted by:
 ENGR. ALIBANO
 Engineer I, Checked

Recommending Approval:
 LUZ R. MARCELINO
 RTD for Operations and Extension

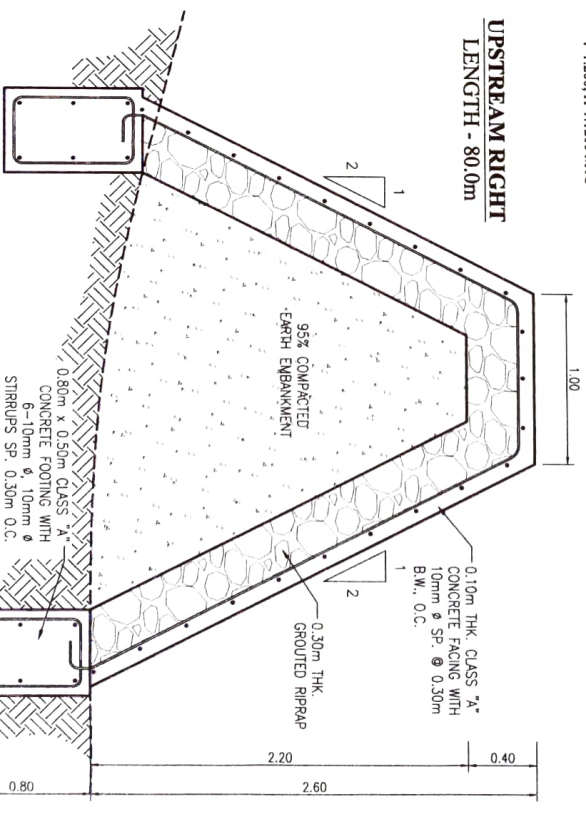
Approved by:
 RODEL P. TRINIDAD, MARE
 Regional Account Officer

DATE: 2021
 SHEET NO.: 7/10

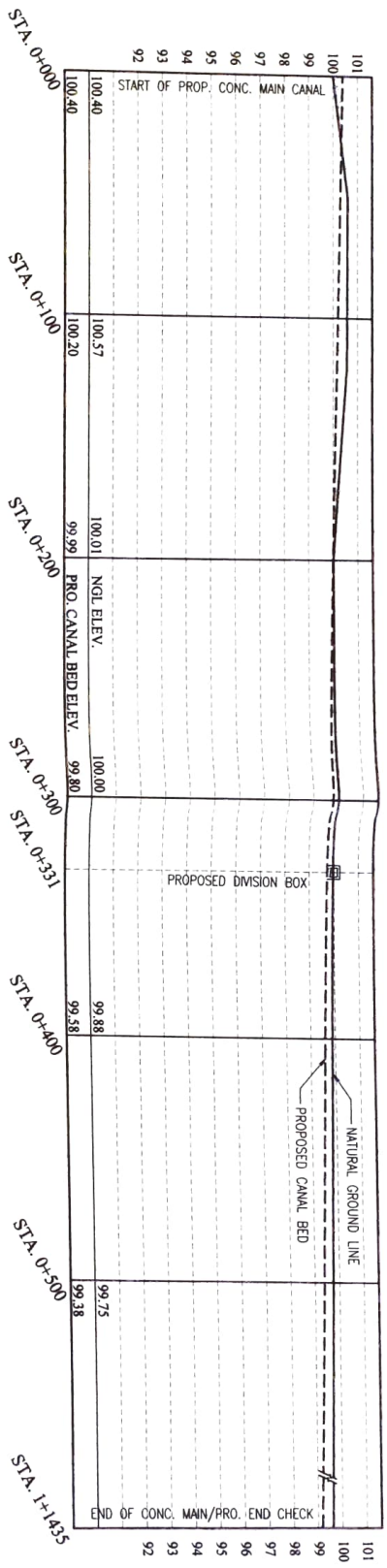
DIVISION BOX AT STAT. 0+331
 SCALE 1:30 MTS



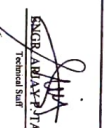
SLOPE PROTECTION DETAIL
 SCALE 1:30 MTS




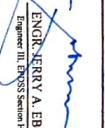
PROFILE ALONG CENTER OF MAIN CANAL
 SCALE V:1:200, H:1:200 MTS

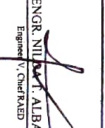


Name of Project: CONSTRUCTION OF SAN JUAN DAKAN DIVERSION DAM
Location: Brgy. San Juan Dakan, Bula, Sorsogon
Fund Source: 2022 RICE PROGRAM (Trp 1)
Status/Content: AS SHOWN

Prepared by:

ENGR. ARLVIN J. JARA
 Technical Staff

Checked by:

ENGR. ARTHUR B. MIRA
 Engineer III, EROPS Unit Head

Reviewed by:

ENGR. JERRY A. EBRONA
 Engineer III, DRESS Section Head

Submitted by:

ENGR. NILITO ALBANO
 Engineer IV, Chief RASD

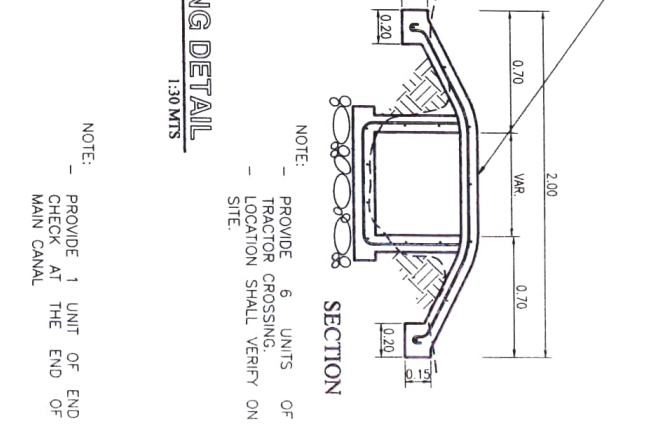
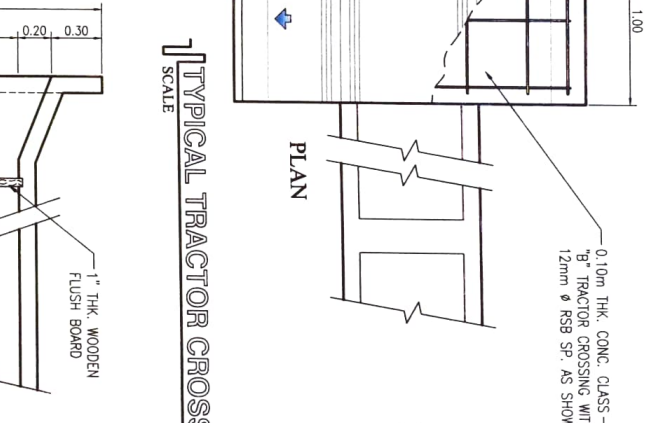
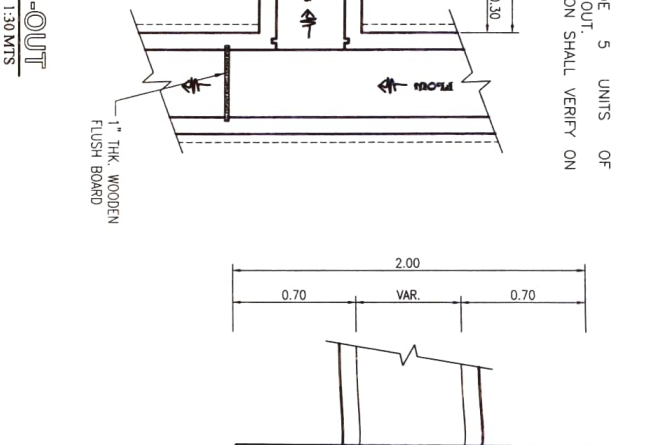
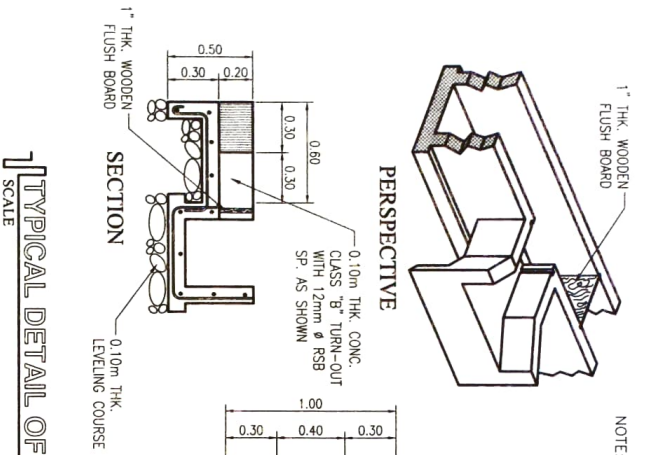
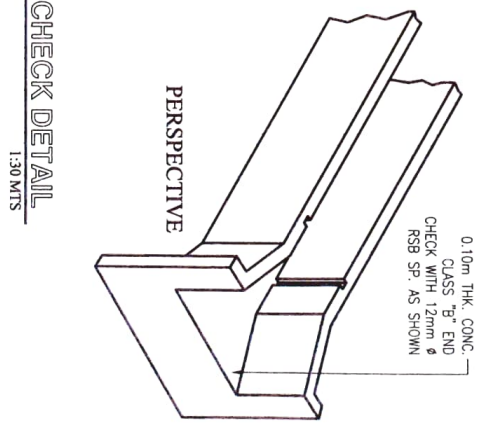
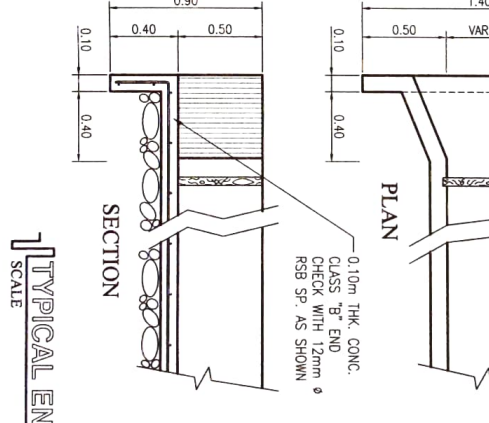
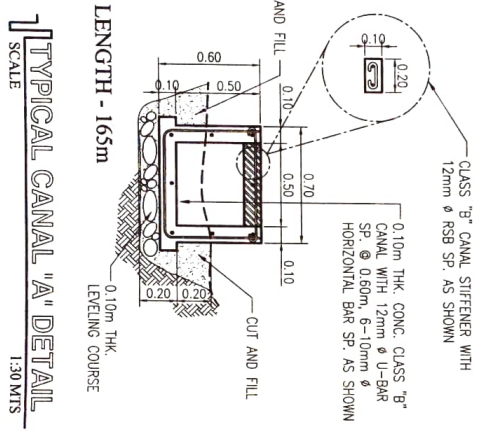
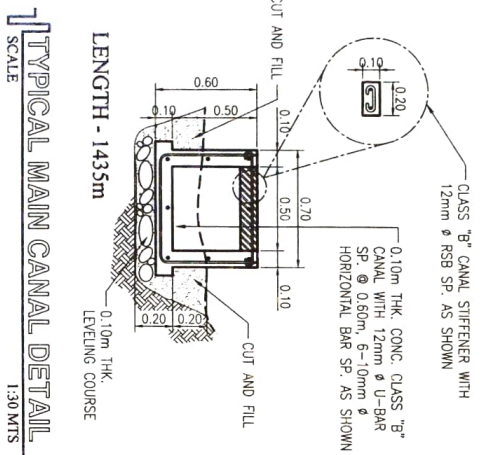
Design/Working Approval:

LUZ R. MARCELINO
 RTD for Operation and Extension

Approved by:

RODELL P. FORNU
 Regional Executive Director

Date: 2021
Page No.: 8 / 10



PERSPECTIVE

SECTION

PLAN

PLAN

SECTION

NOTE:
 - PROVIDE 5 UNITS OF TURN-OUT. LOCATION SHALL VERIFY ON SITE.

NOTE:
 - PROVIDE 6 UNITS OF TRACTOR CROSSING. LOCATION SHALL VERIFY ON SITE.

NOTE:
 - PROVIDE 1 UNIT OF END CHECK AT THE END OF MAIN CANAL.

